

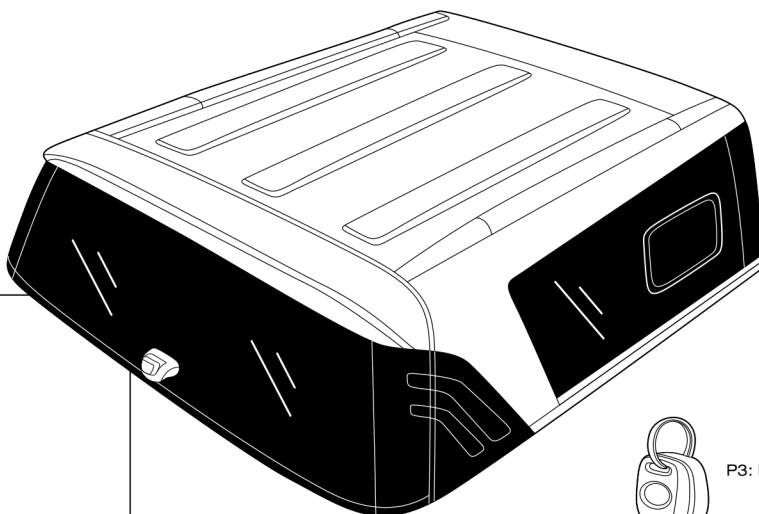


## Mechanical Installation Manual J-Deck Models

Steel Canopy : TL-1  
Version 1.0

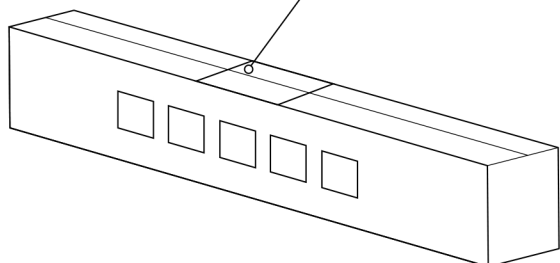
### Part In Main Carton

P1: Steel Canopy TL-1

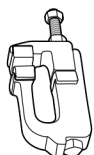


### Kit Box

Part List Paper

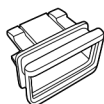


P3: Key



x4 (D-Cab)  
x6 (C-Cab)

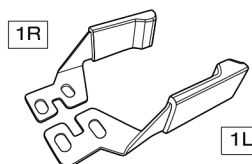
K1 : C-Clamp



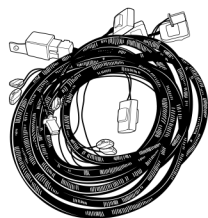
K3 : Switch Case



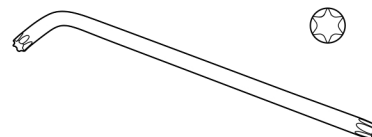
K8 : T Paint



K2 : Tailgate Lock



K4 : Wiring No.38

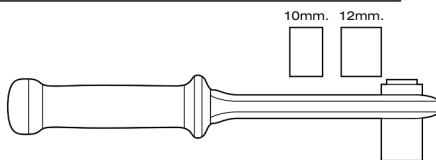


T6 : Hexalobular Wrench # T40

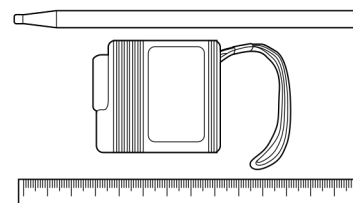
### Require Tools



T1 : 13 mm. Wrench



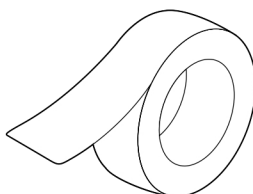
T3 : 10,12mm. Torque Wrench



T4 : Measuring Tape/Ruler/Pencil



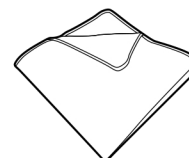
T2 : 10 mm. Wrench



T5 : Tape



T6 : Electric Tape



T7 : Fabric



## Mechanical Installation Manual

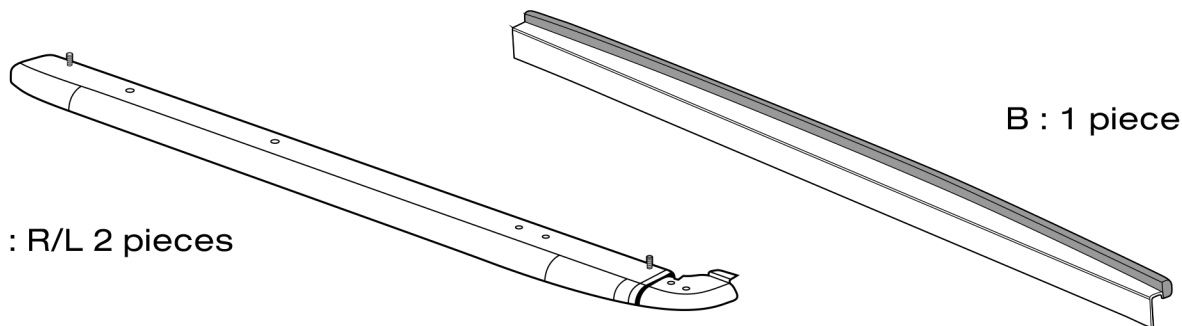
### J-Deck Models

## Steel Canopy : TL-1

### Version 1.0

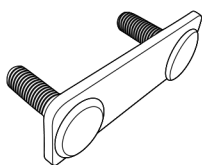
## Part List

Steel (Zinc Coating)

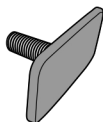


A : R/L 2 pieces

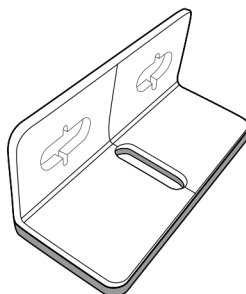
B : 1 piece



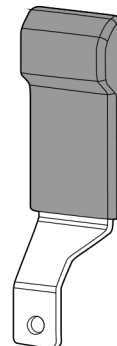
C : 4 pieces



D : 4 pieces



E : 4 pieces



F : R/L 2 pieces

No. 12 mm.



G : 12 pieces



H : 12 pieces

No. 8 mm.

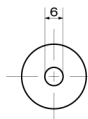


I : 12 pieces



J : 8 pieces

No. 6 mm.



K : 2 pieces

No. 6 mm.



L : 2 pieces

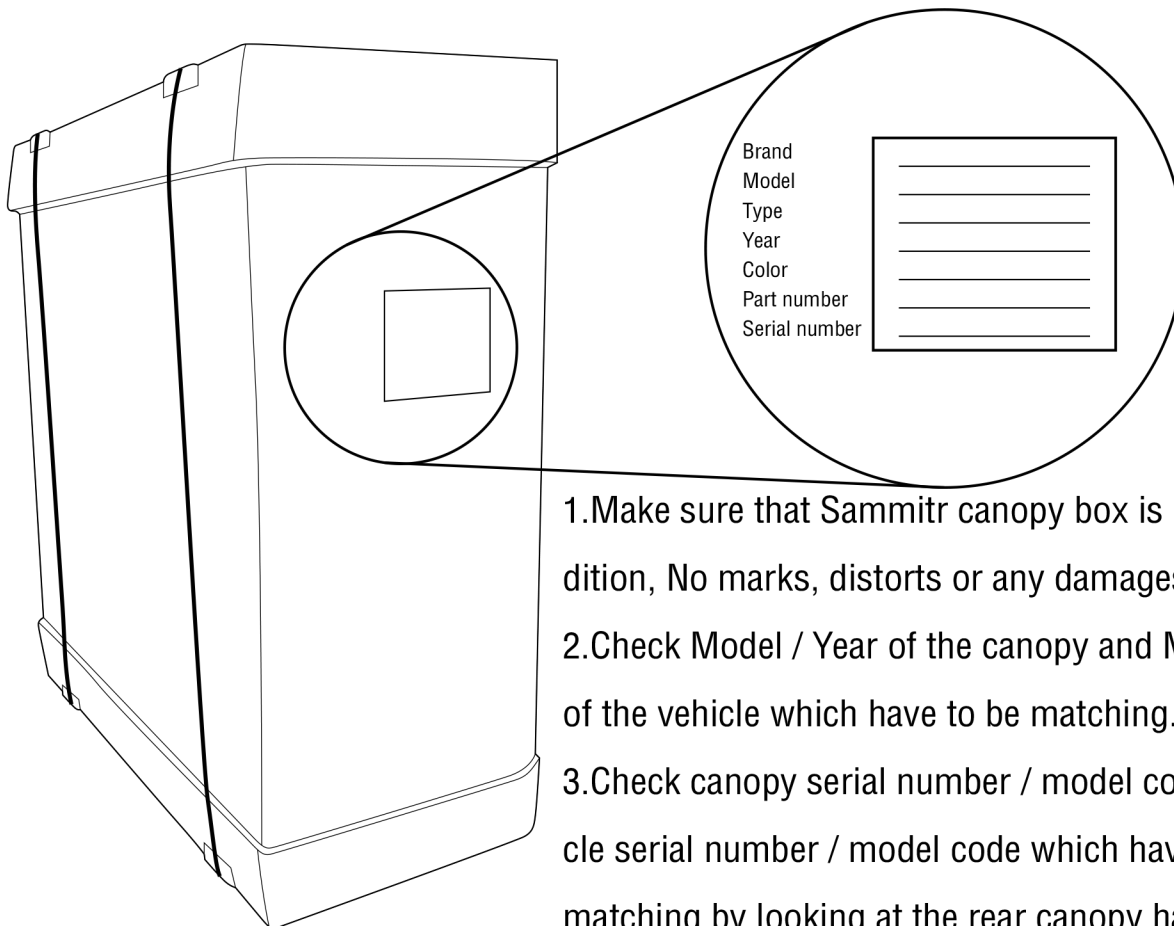


Rubber (EPDM)

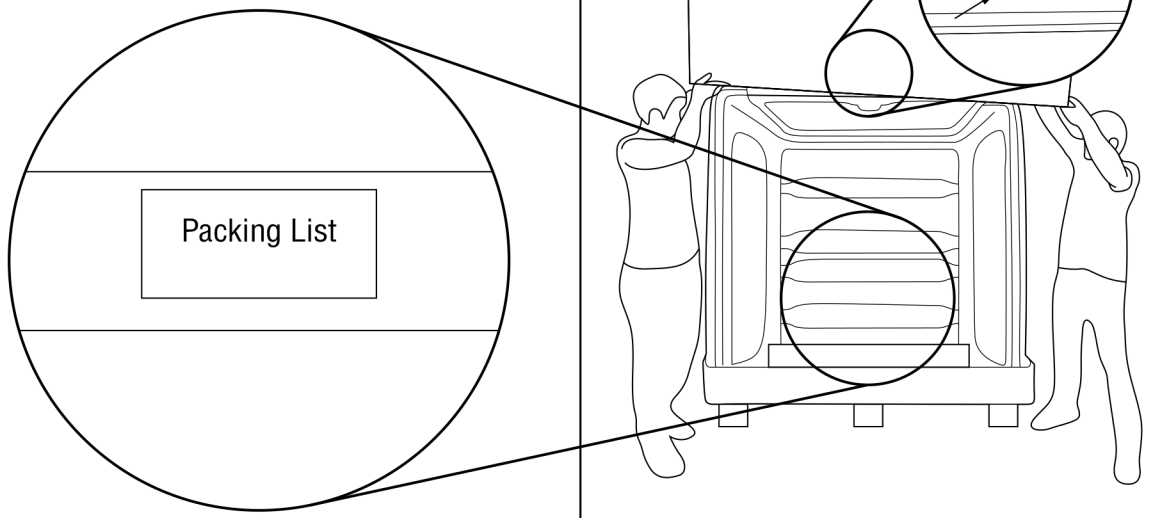


1

## The Procedure of checking the Sammitr canopy box before installation.



4. Check all the accessories received inside the box with the Packing List.

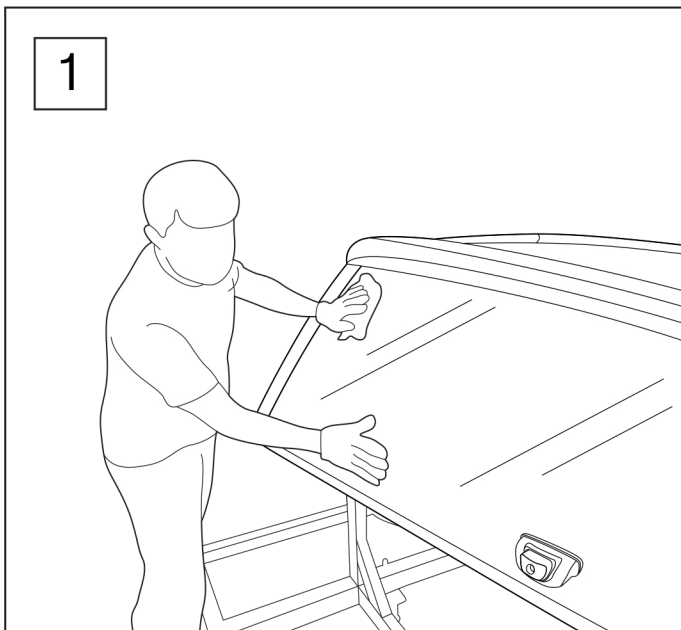




2

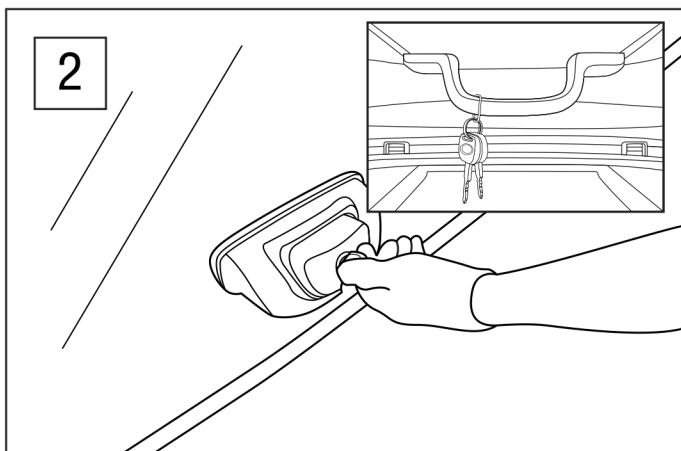
## The preparation process of Sammitr Canopy TL-1 model before installation with the vehicle.

1

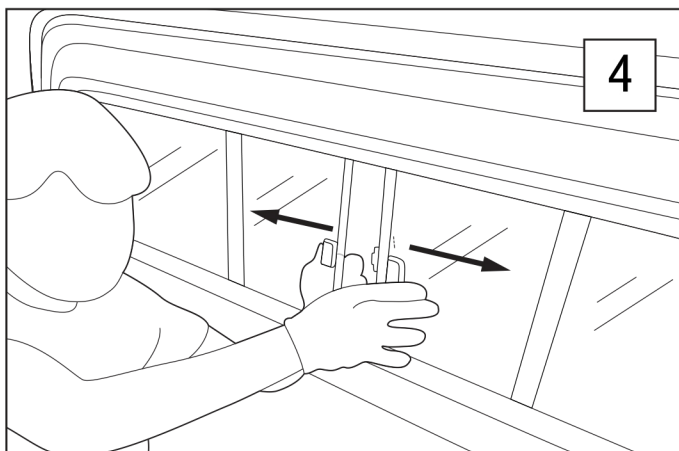


1. Canopy have to be in good condition, no damage, dent, cracks, smooth surface including no window damages or cracks.
2. Locking system is working for both keys.
3. Canopy sides are not damage, dent or cracks.
4. Canopy front window panel is working (open/close), no cracks or damages occurrences.
5. Check the Rear Door by open and close.

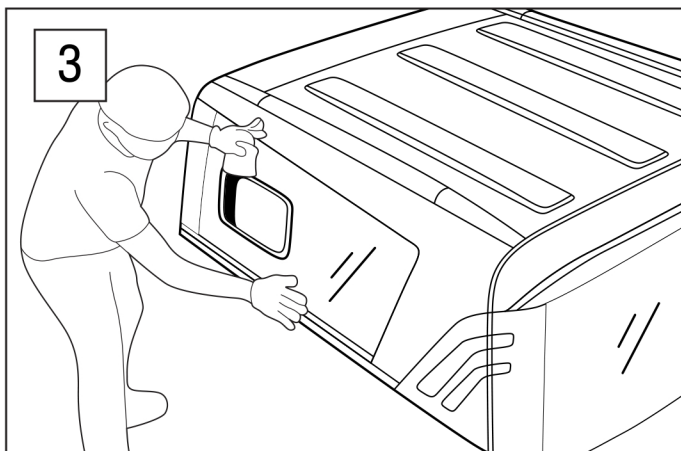
2



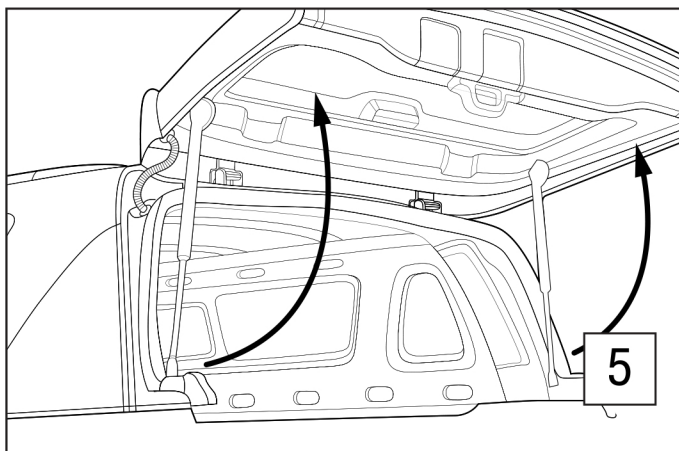
4



3



5

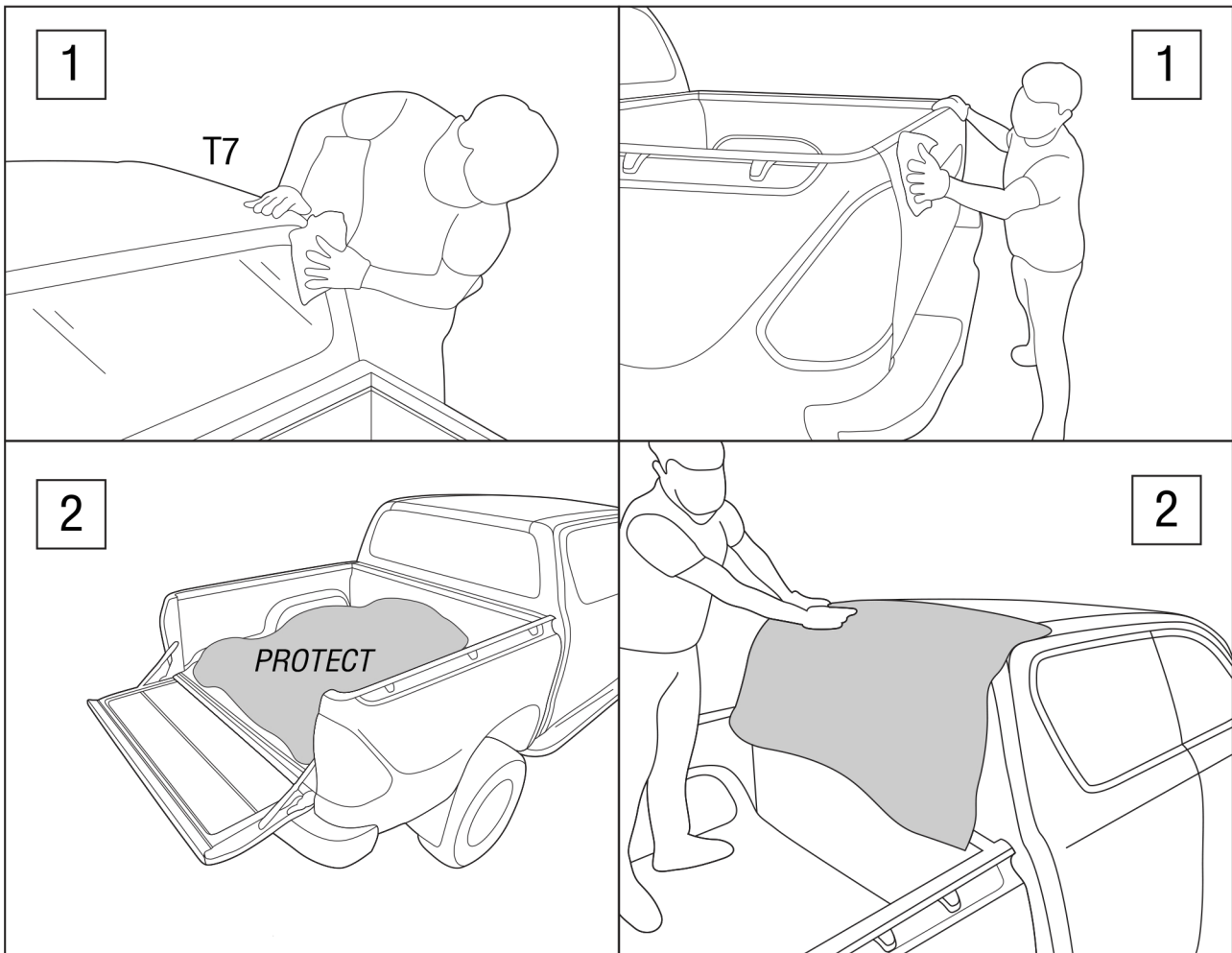


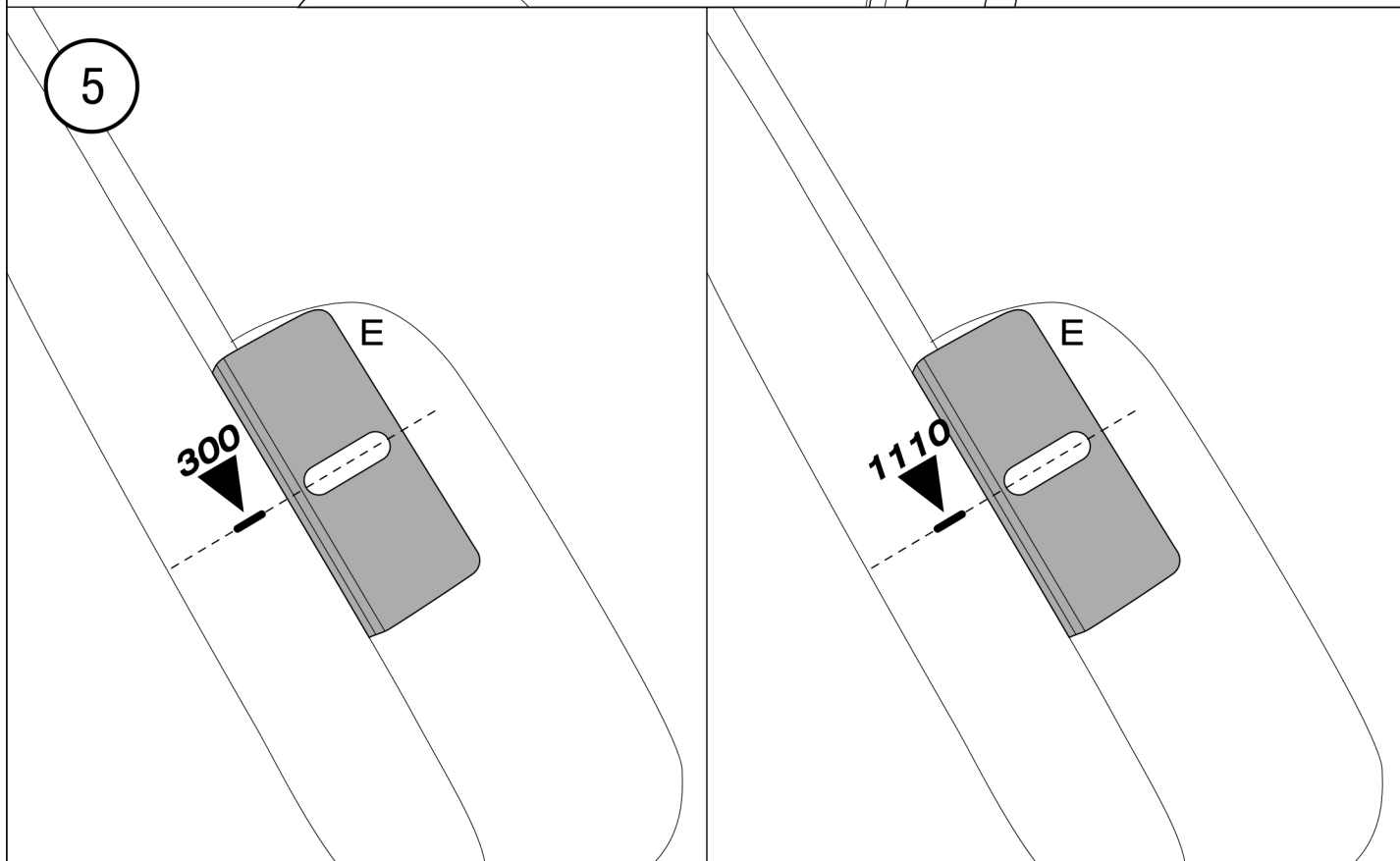
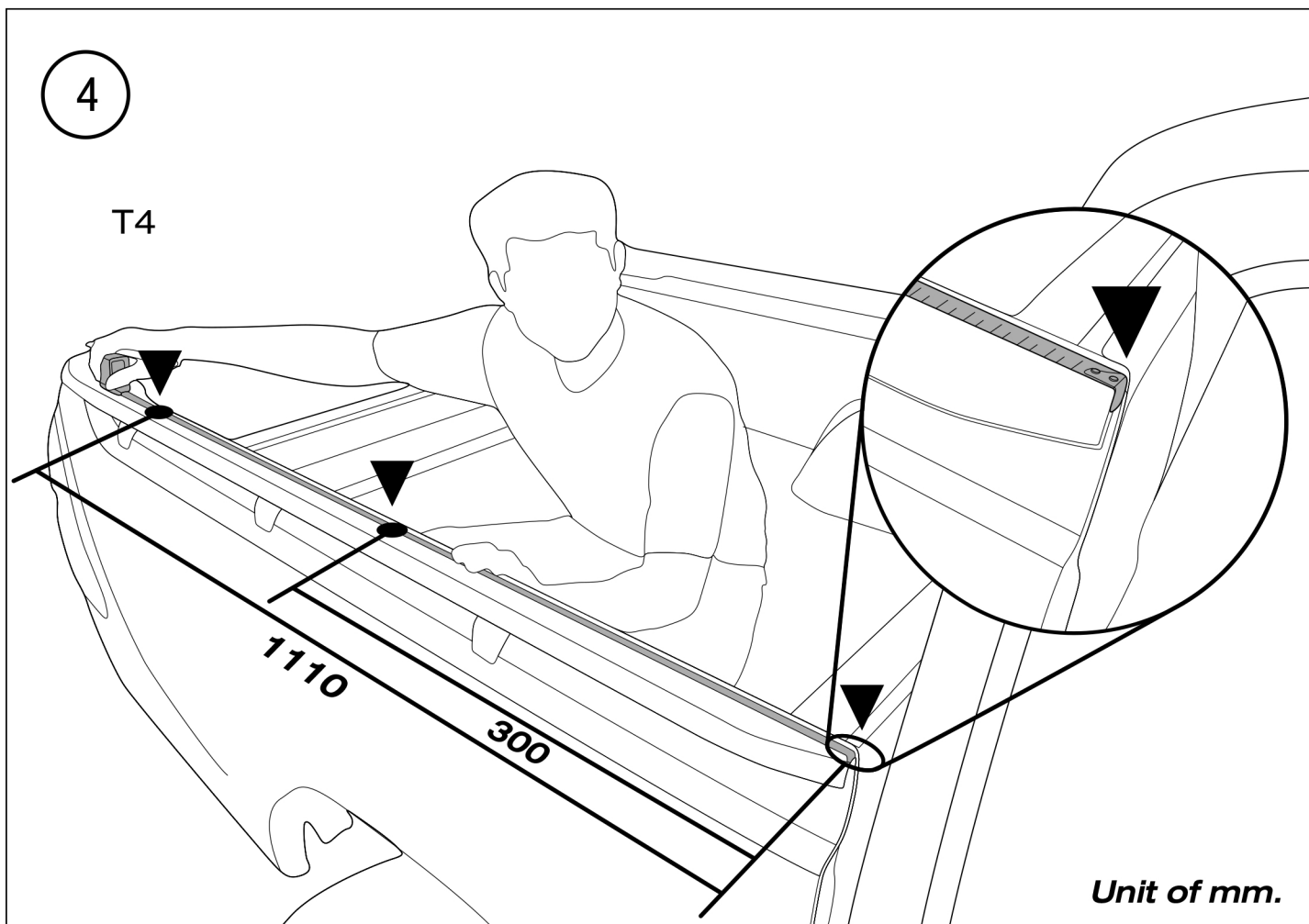


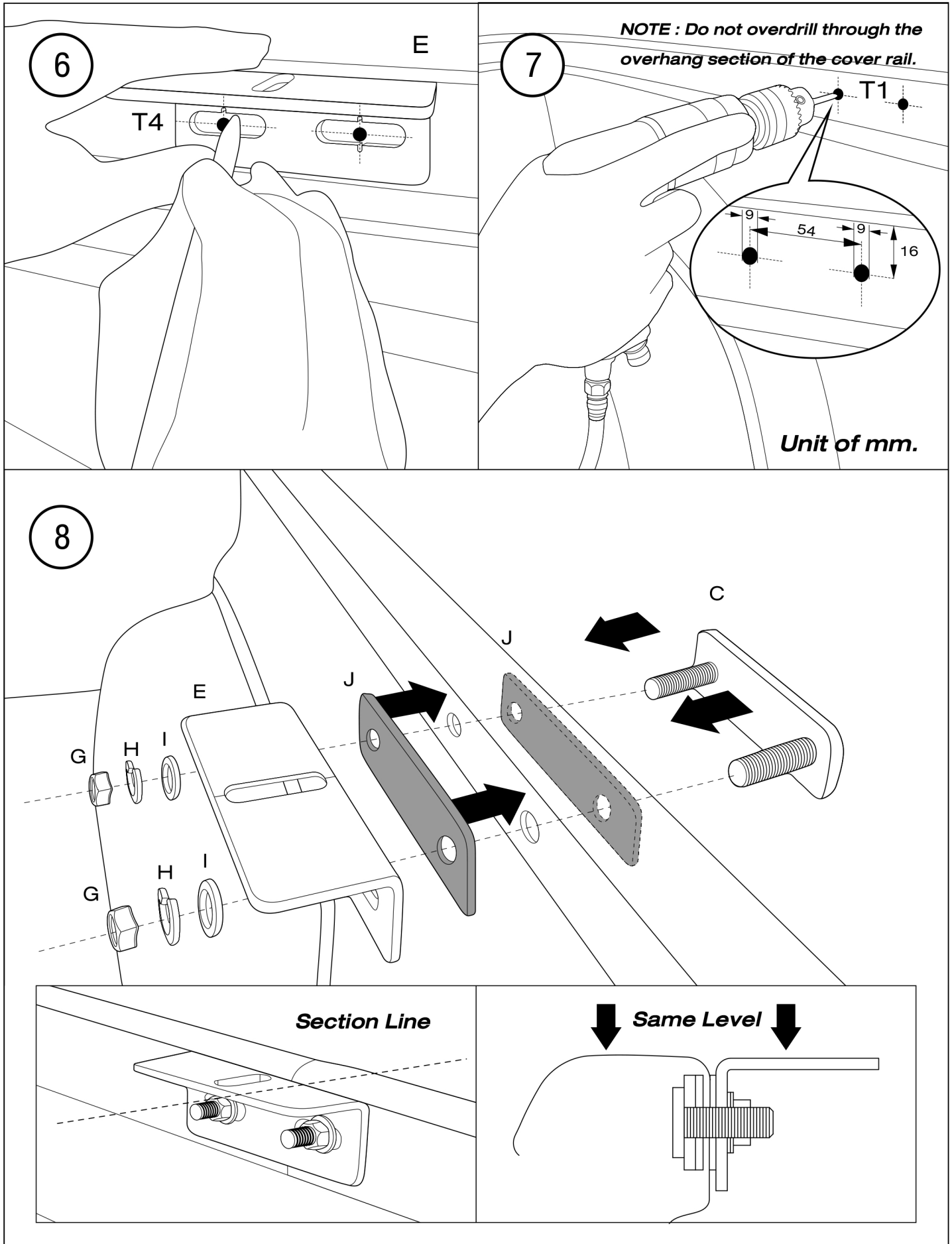
3

## The process of checking and preparing the Toyota Hilux REVO J-DECK vehicle before install the canopy.

1. Clean up the vehicle body including the top, all sides and Rear tub.
2. Cover the fabric to protect the scratches resistant.





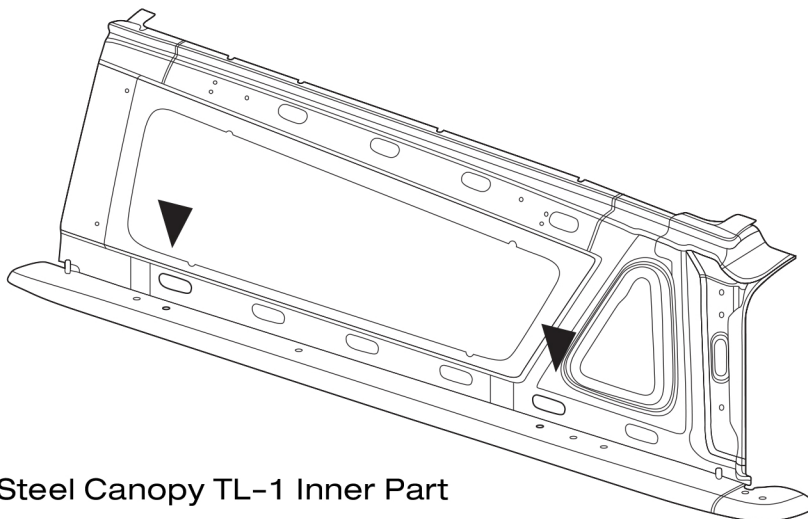
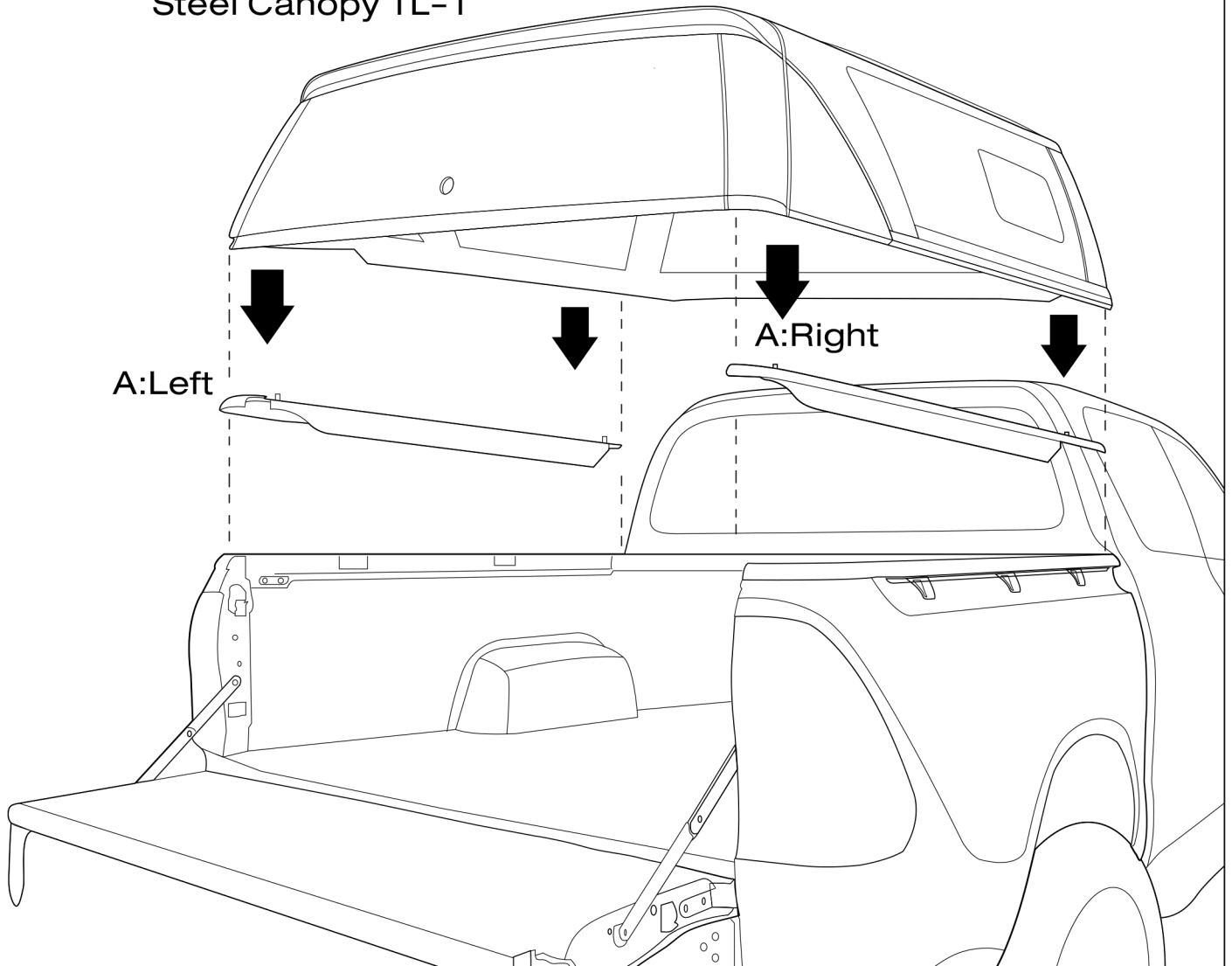




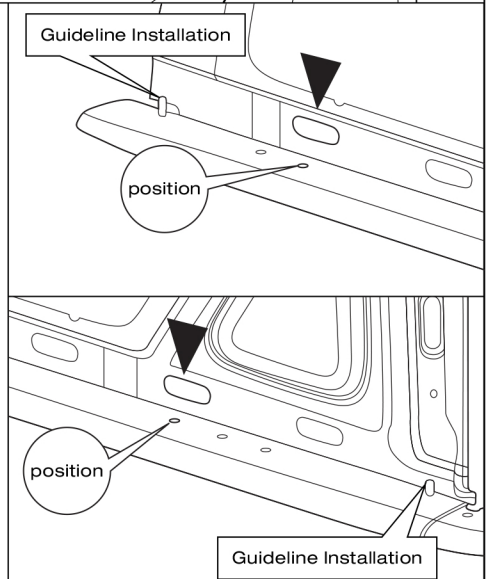
9

**Installation Steel Canopy TL1 and Frame Weather Strip on cabin.**

Steel Canopy TL-1

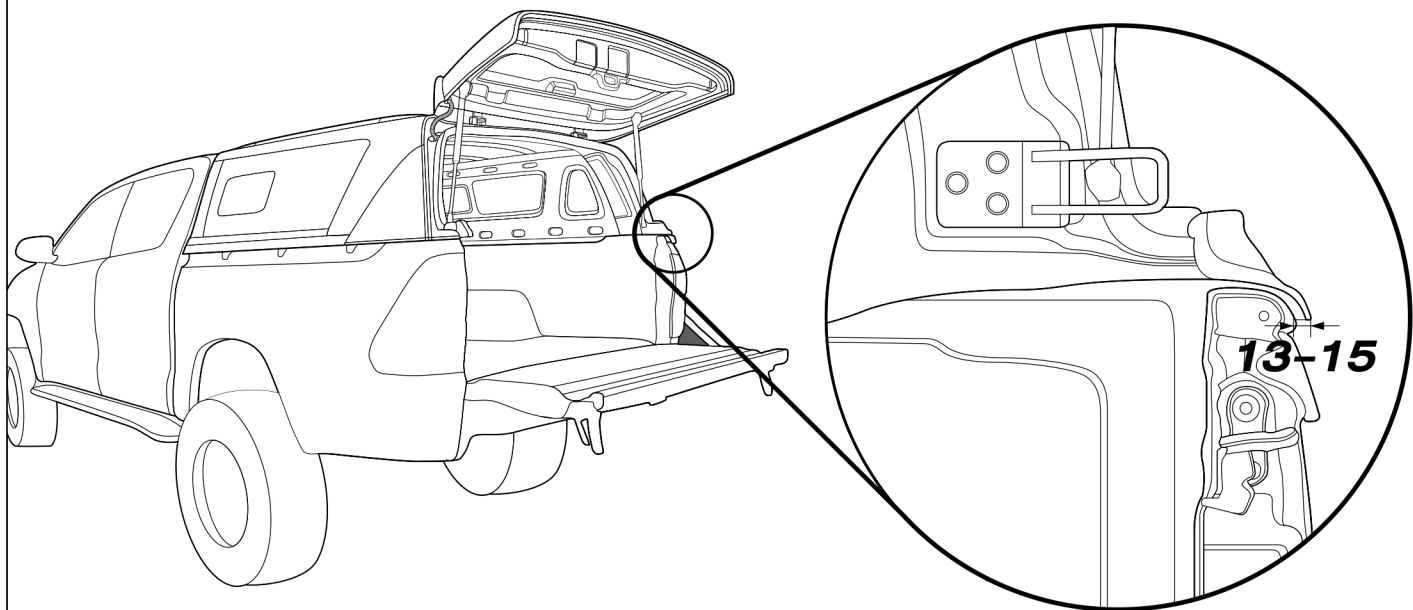


Steel Canopy TL-1 Inner Part

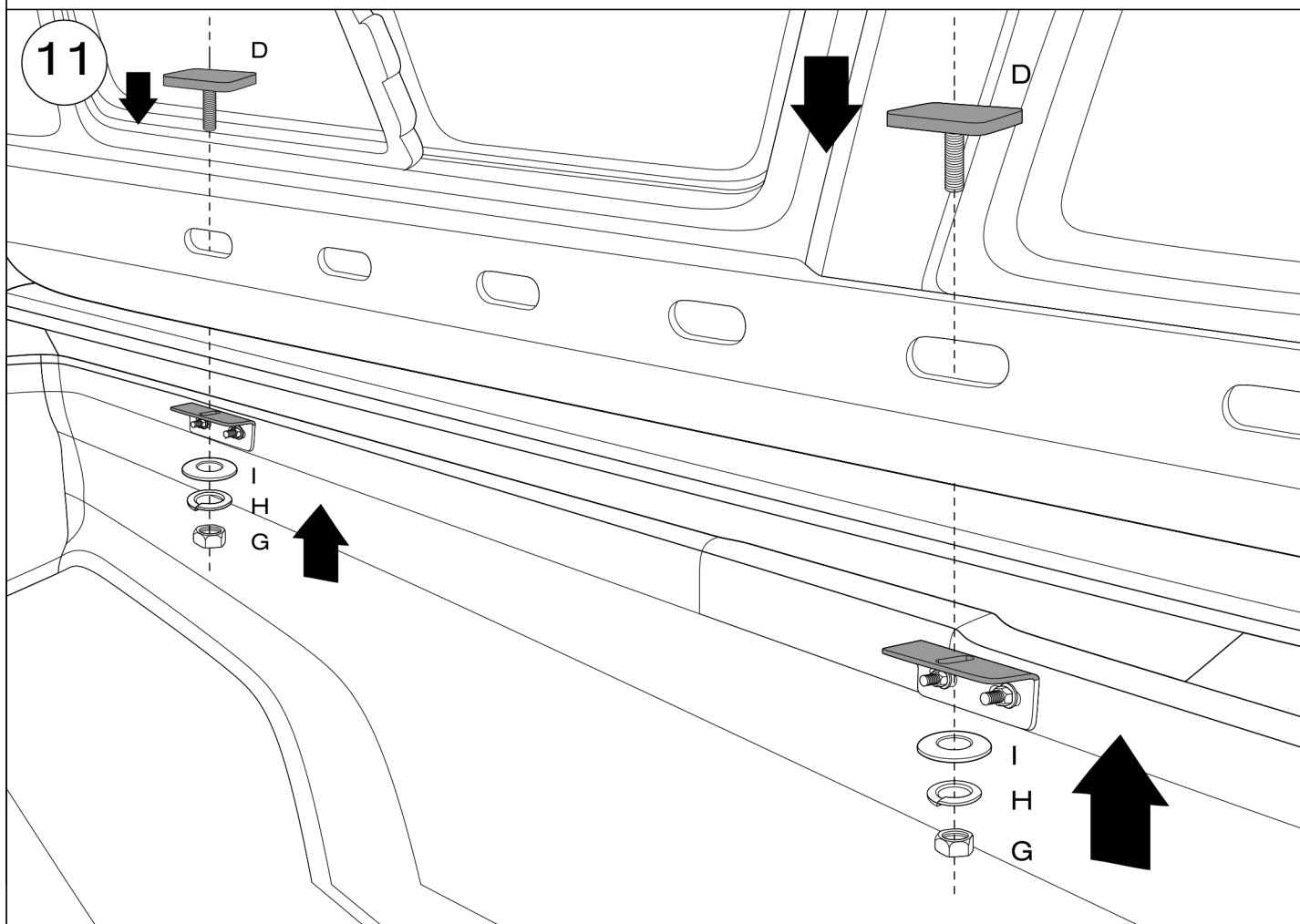




10



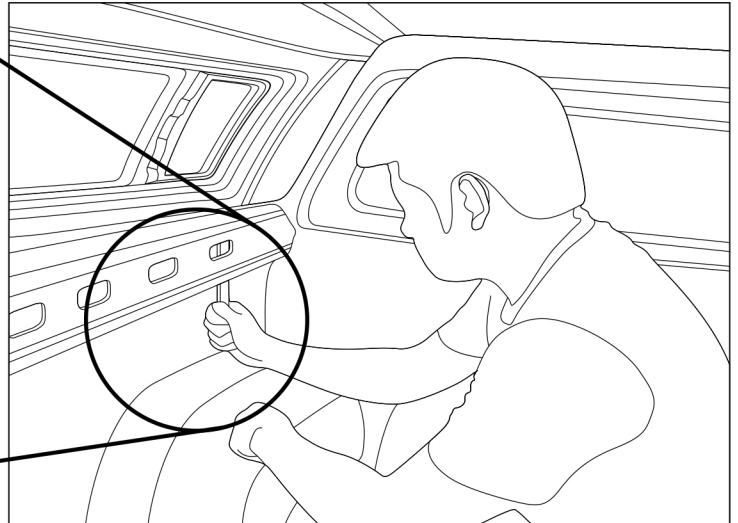
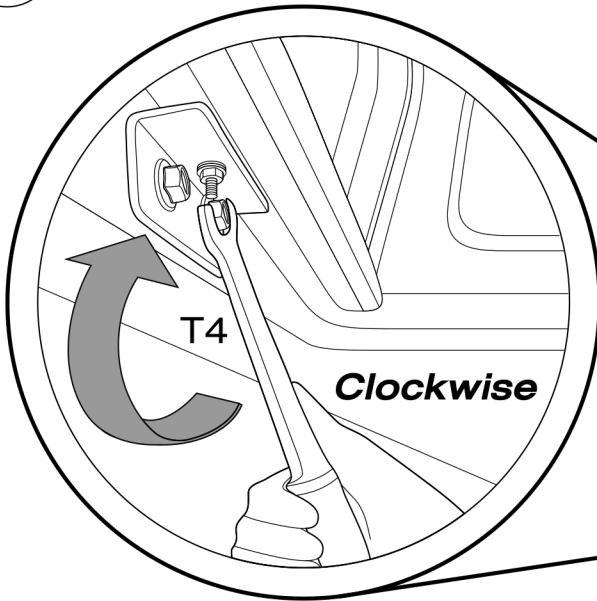
11



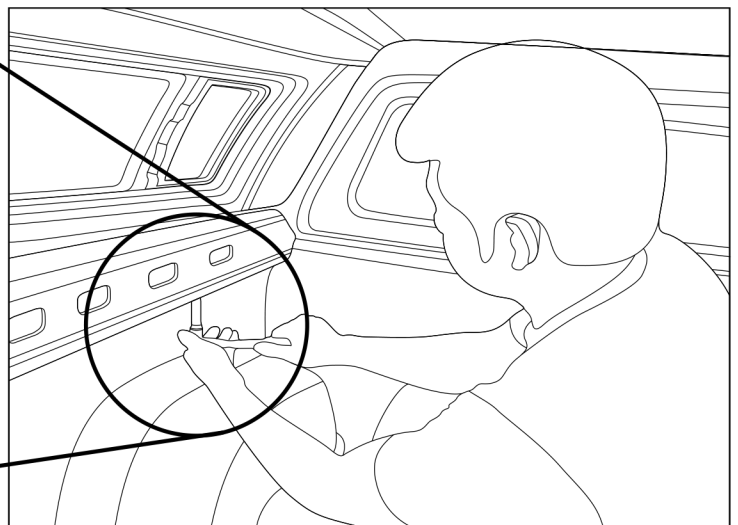
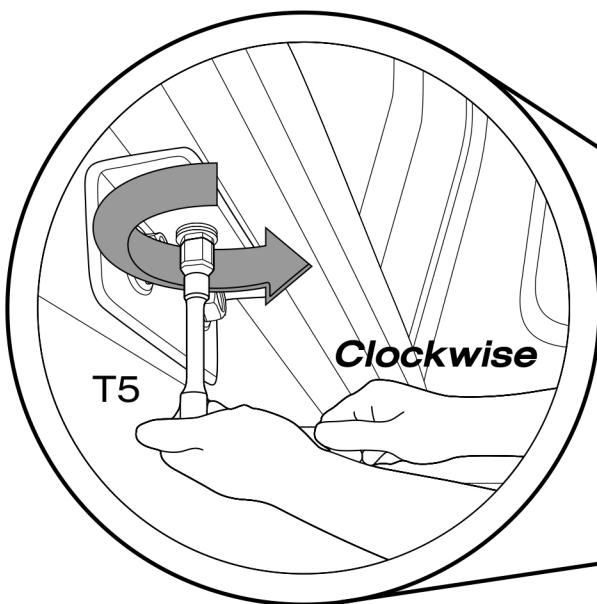




12



***Torque Wrench Tightening To 18-20 Nm***



***Torque Wrench Tightening To 14-16 Nm***

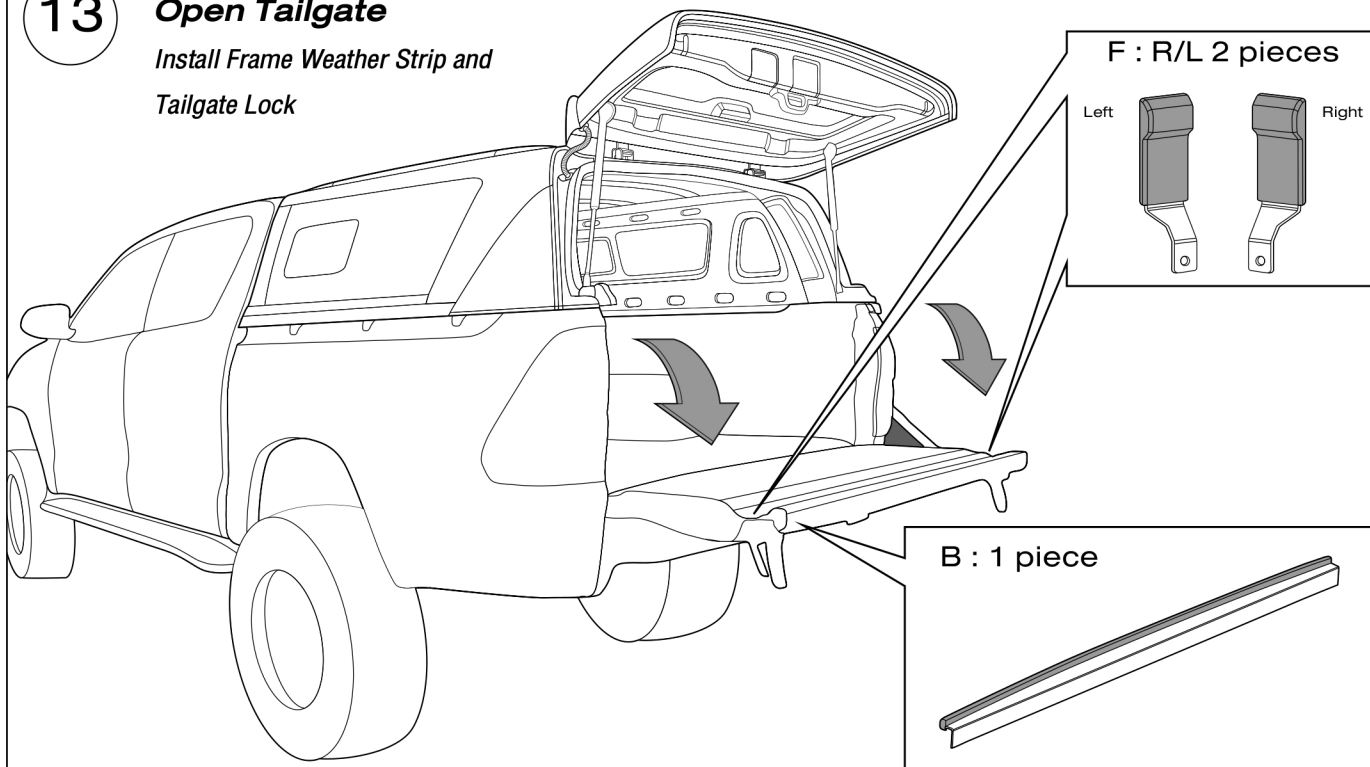
***Note: Over tightening could lead to stressing of structure, leading to potential damage to the canopy. Do not over tighten.***



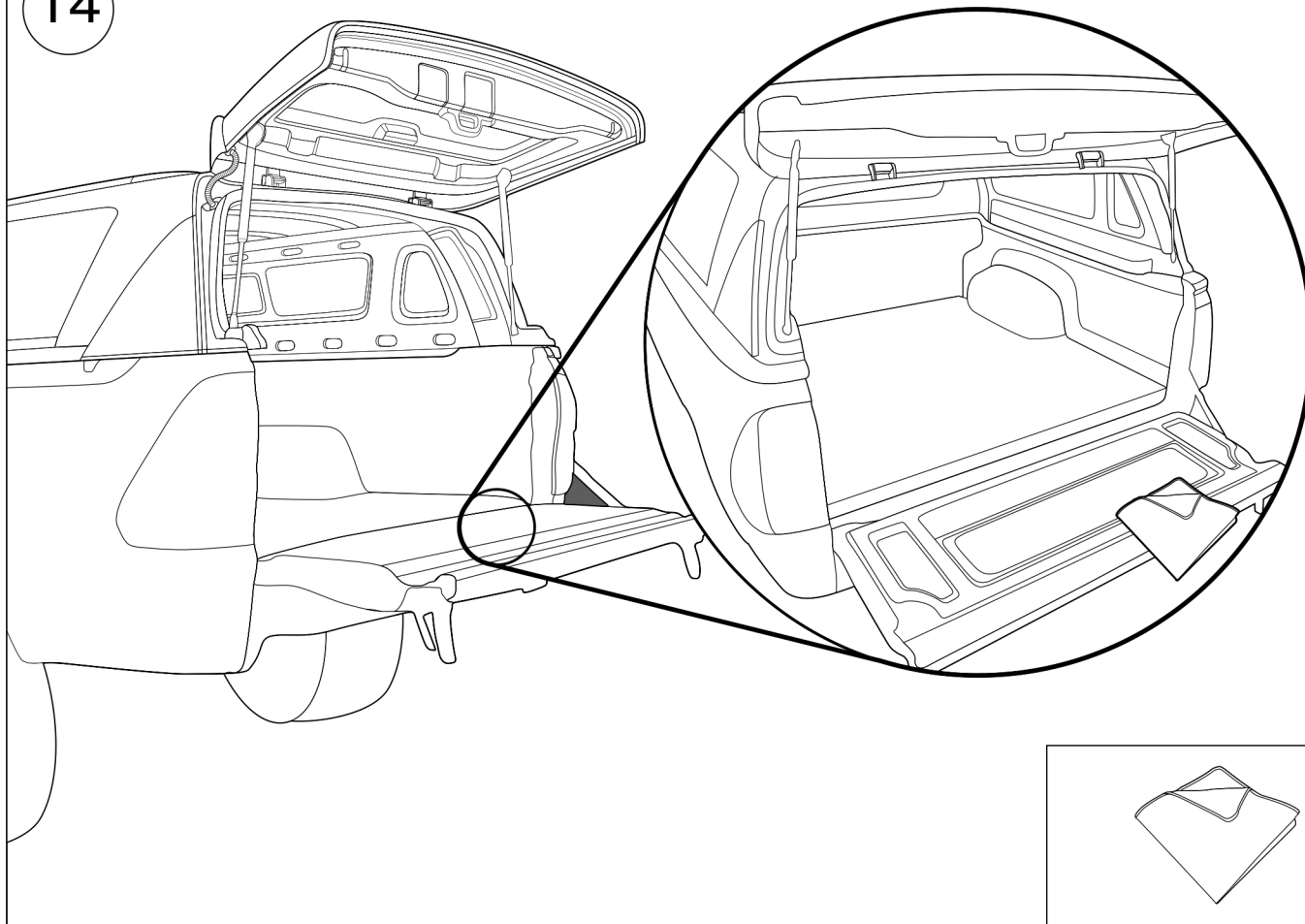
13

## Open Tailgate

Install Frame Weather Strip and  
Tailgate Lock



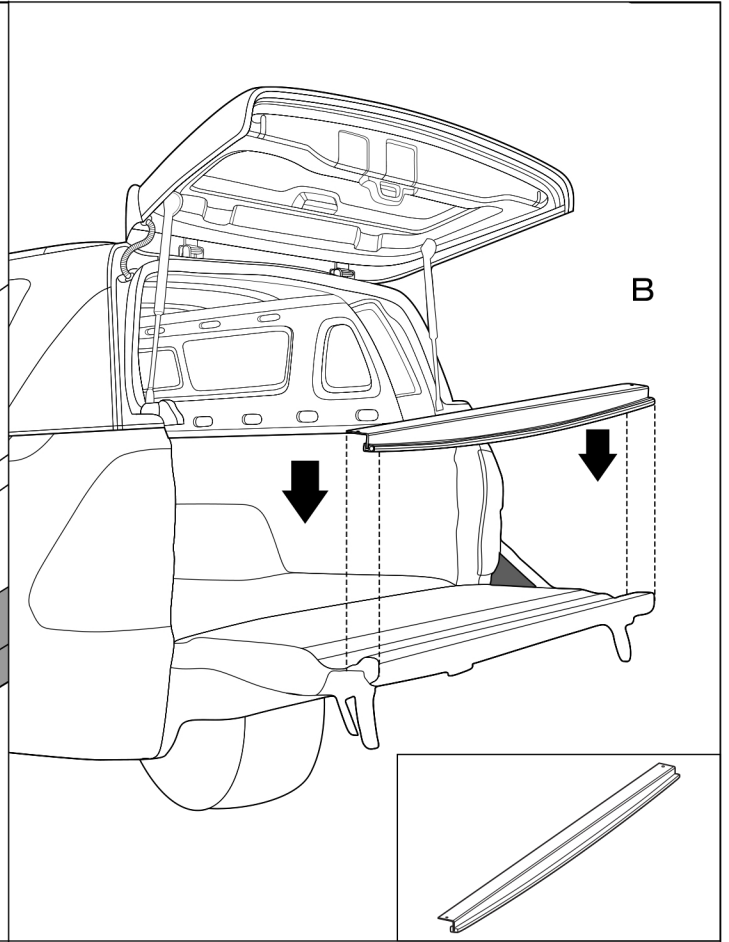
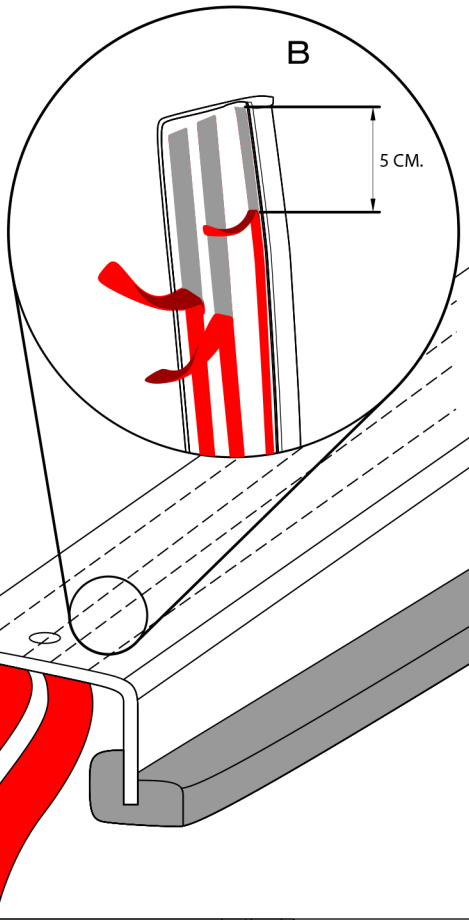
14





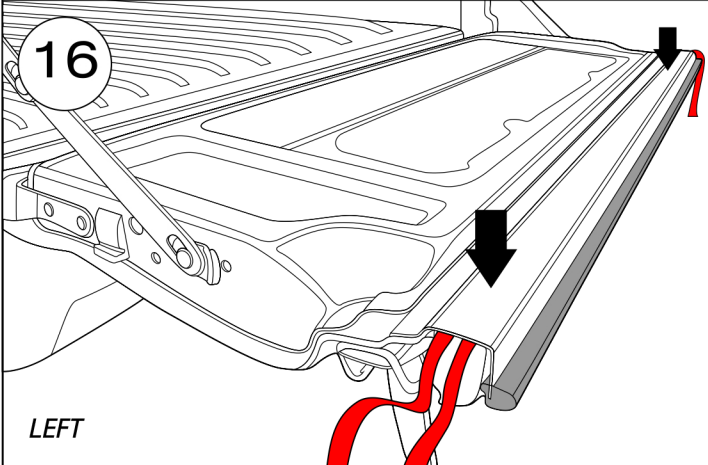
15

*NOTE : Peel off the adhesive lining from the tailgate lip weather strip by about 5 cm.*

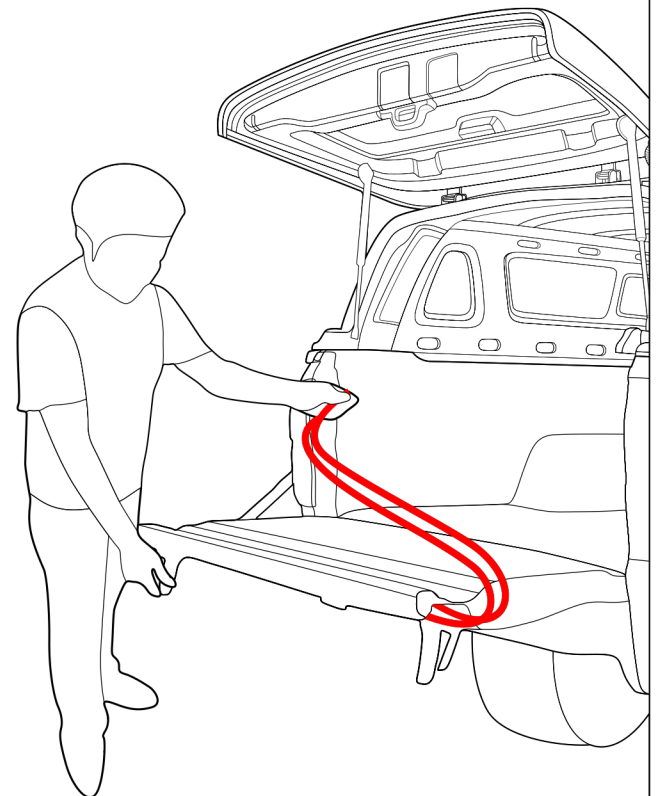
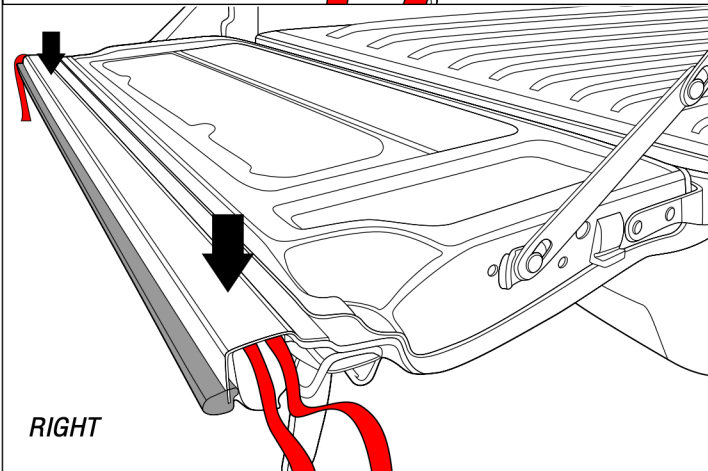


16

LEFT



RIGHT

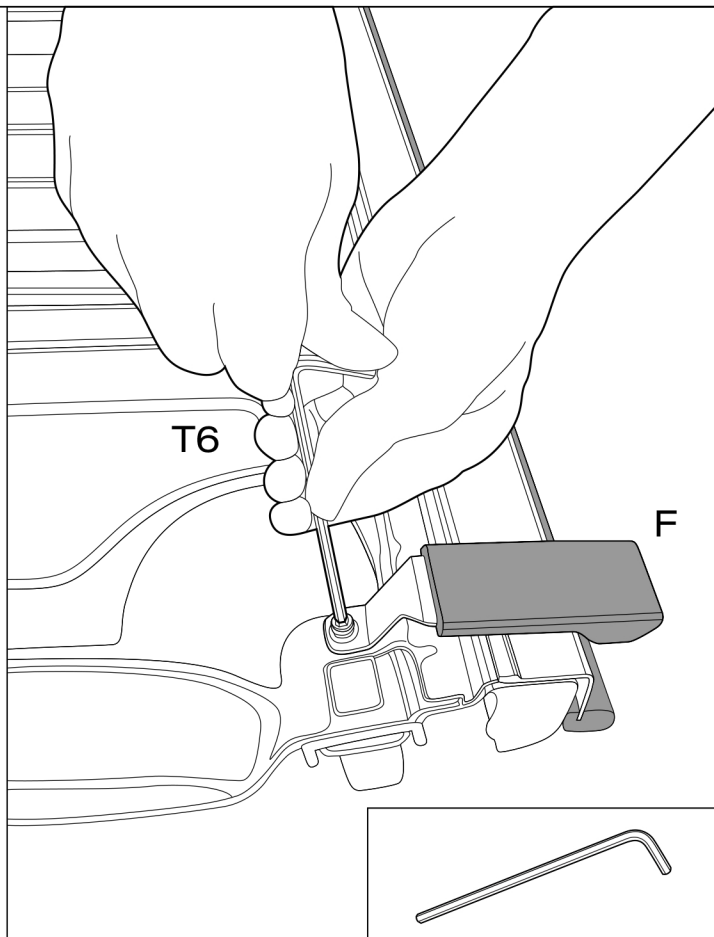
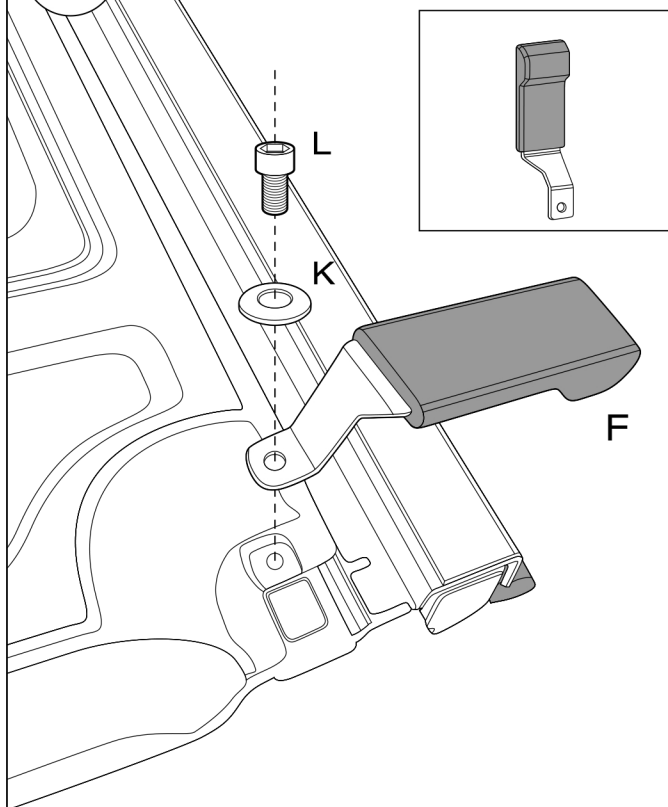


Remove the rest of the adhesive lining



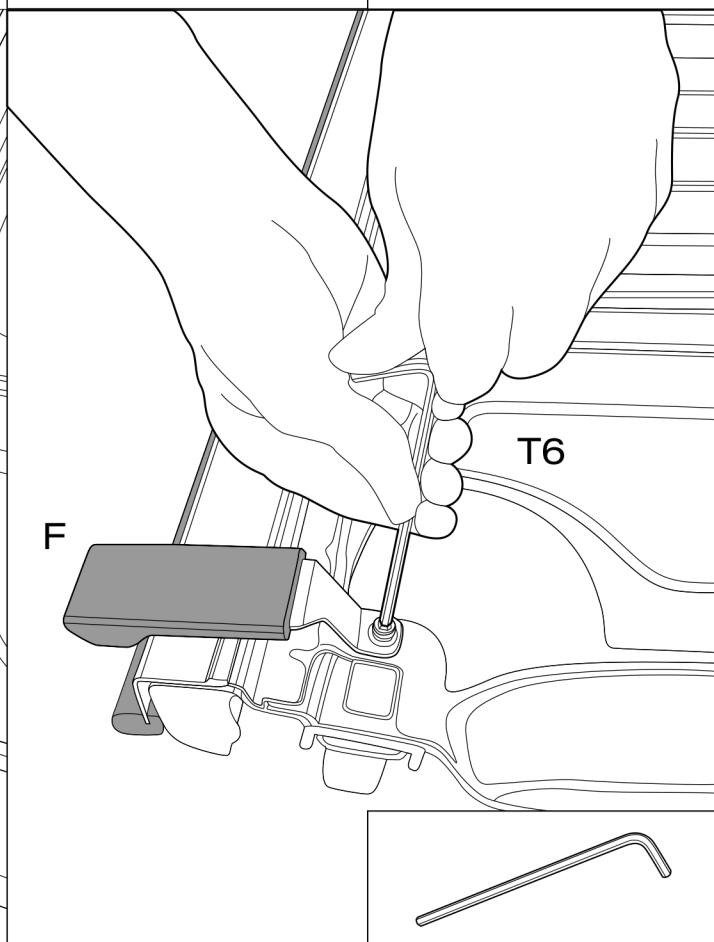
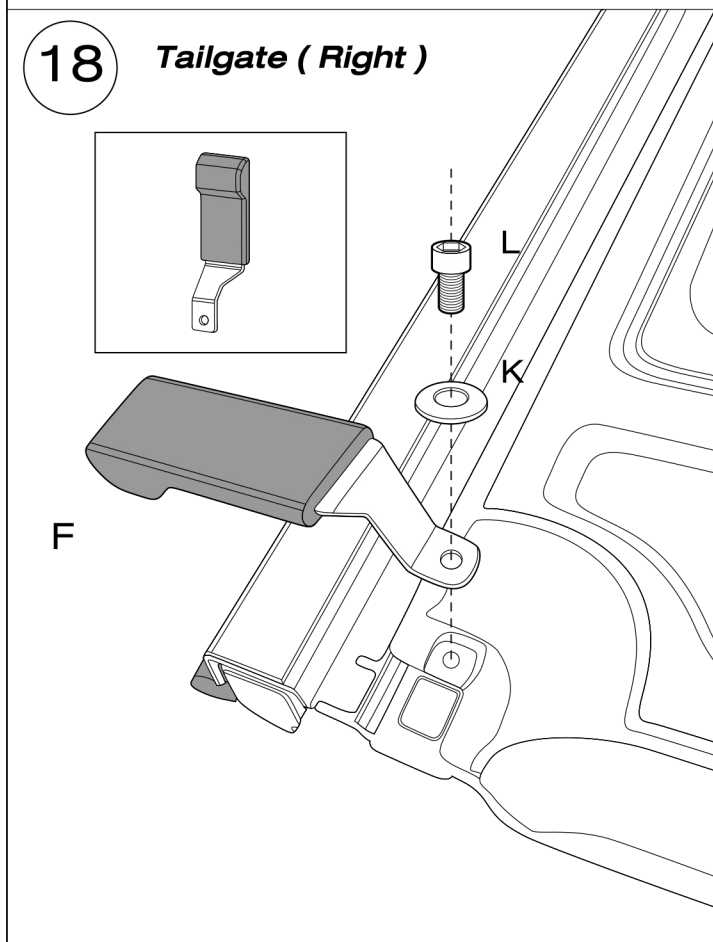
17

*Tailgate ( Left )*



18

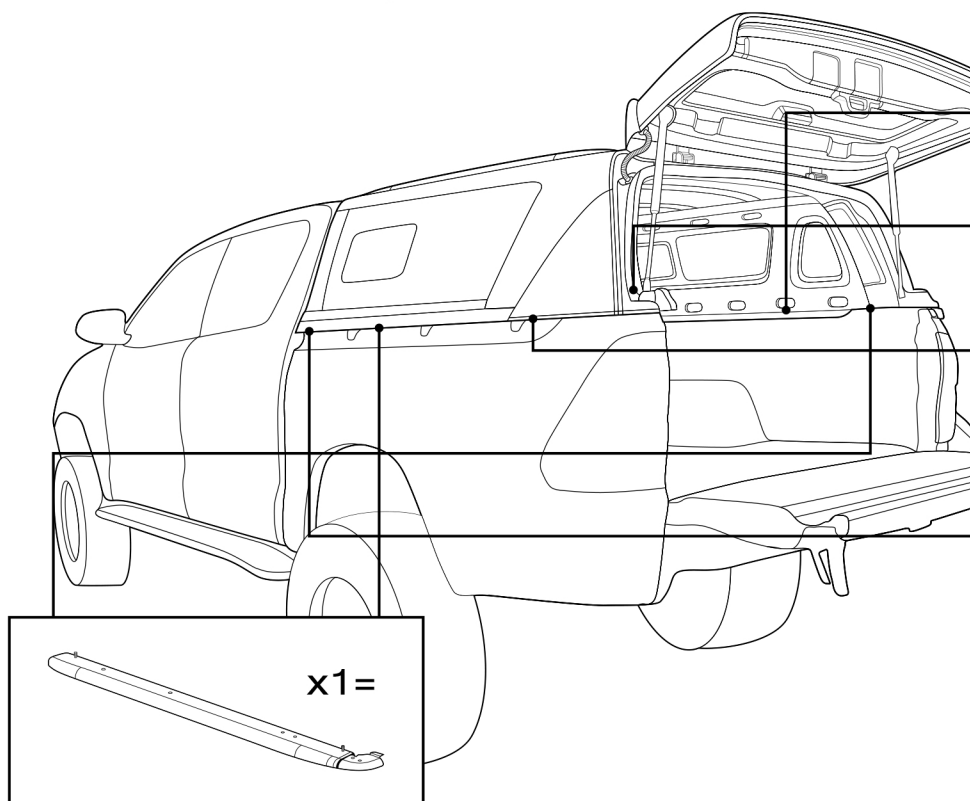
*Tailgate ( Right )*



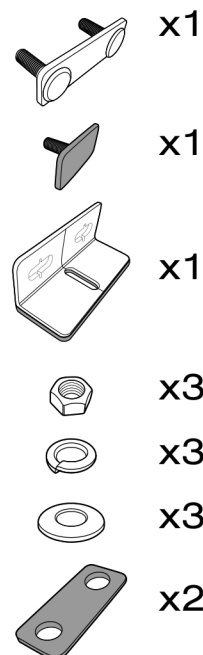




## 19 On Cabin and Canopy



Allx4



## 20 On Tailgate

