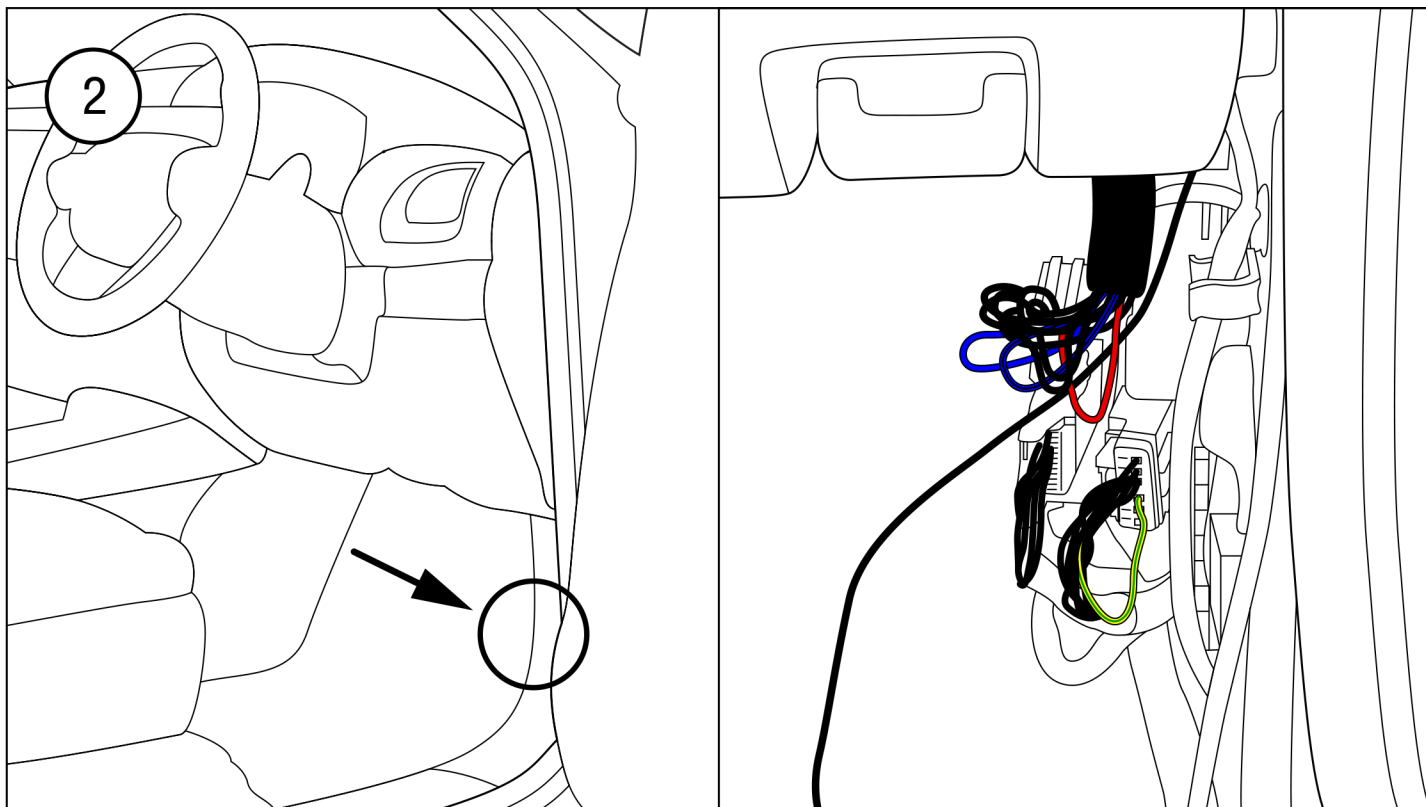
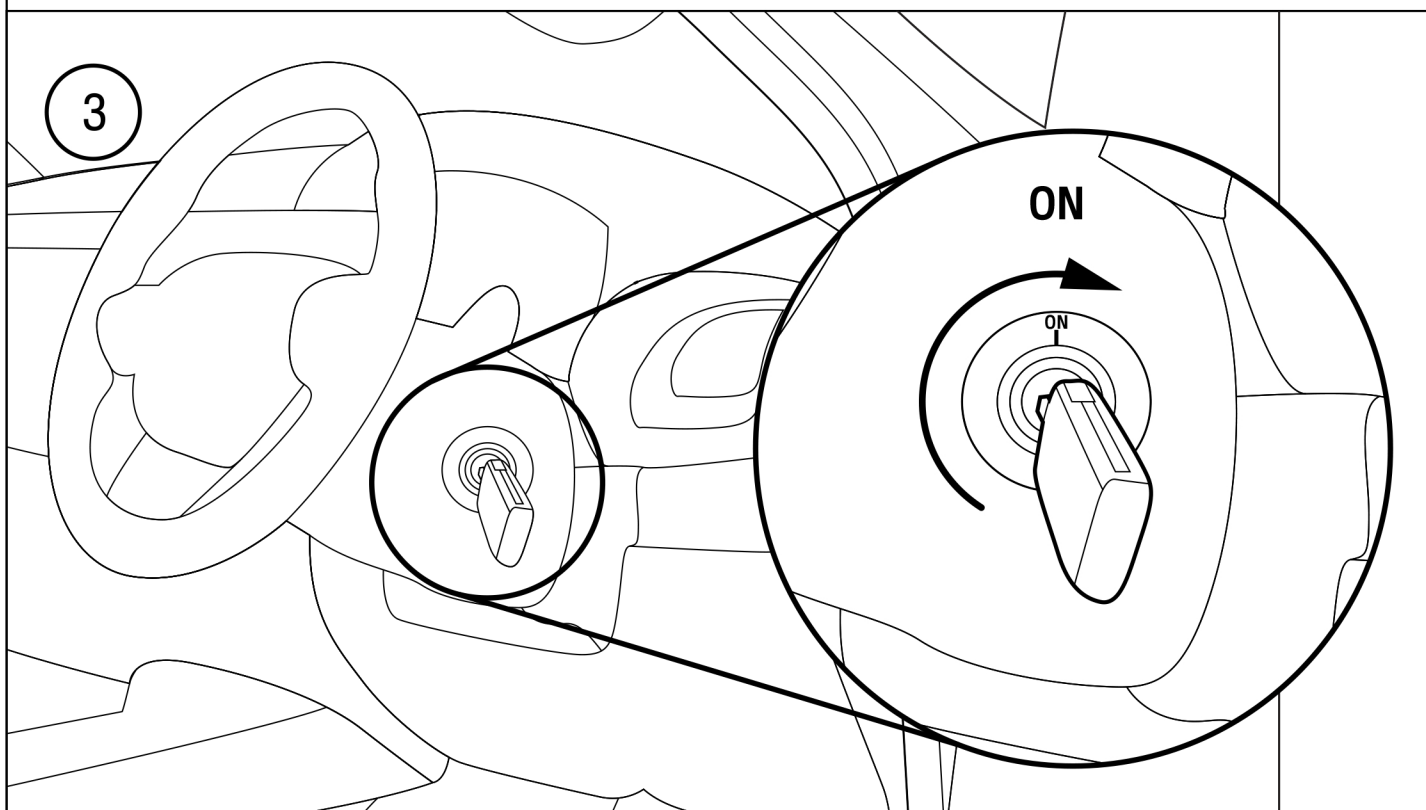


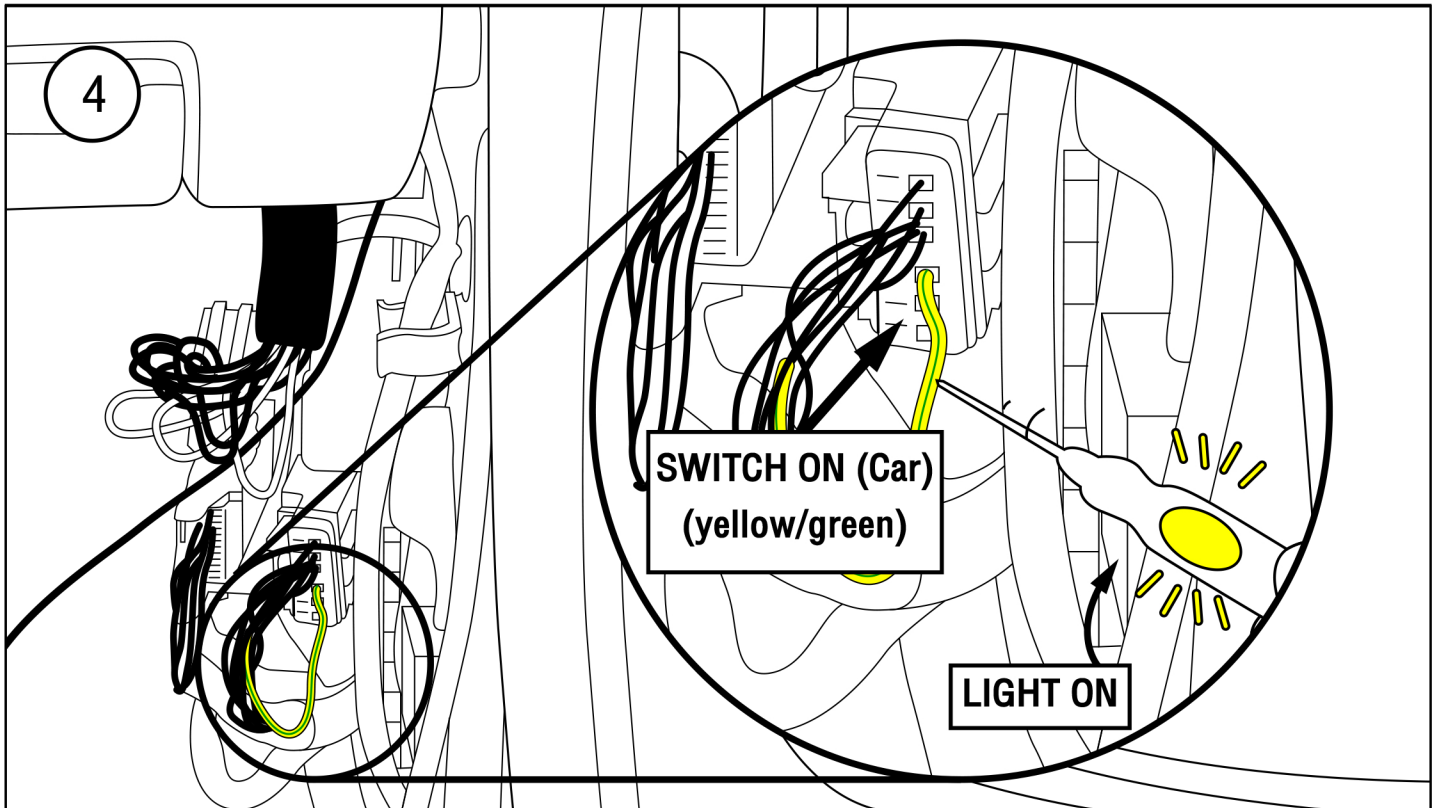
Take off the Wiring Cover at the driver side in order to check the wiring position.



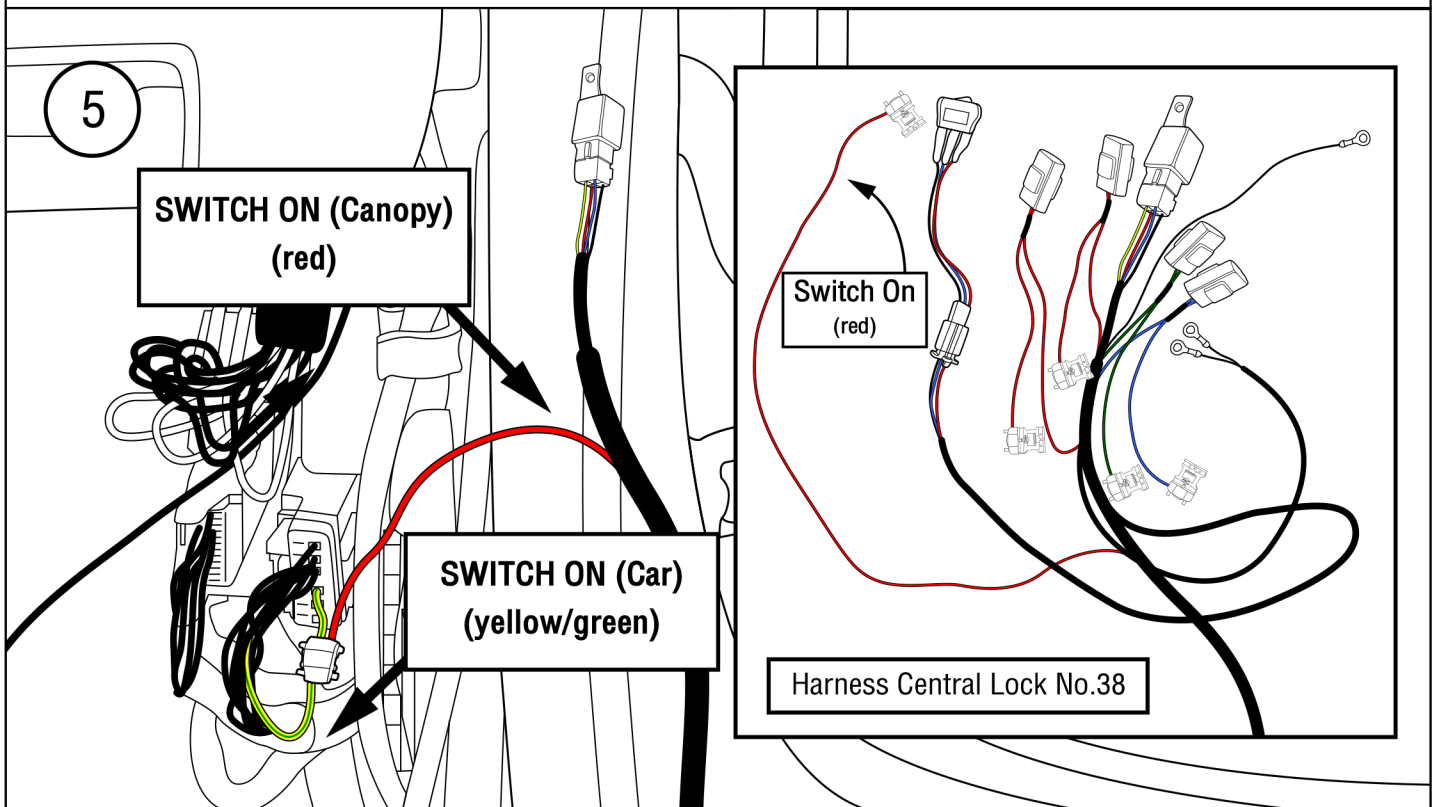
Control Box position that will connect with Harness Central Lock No.38



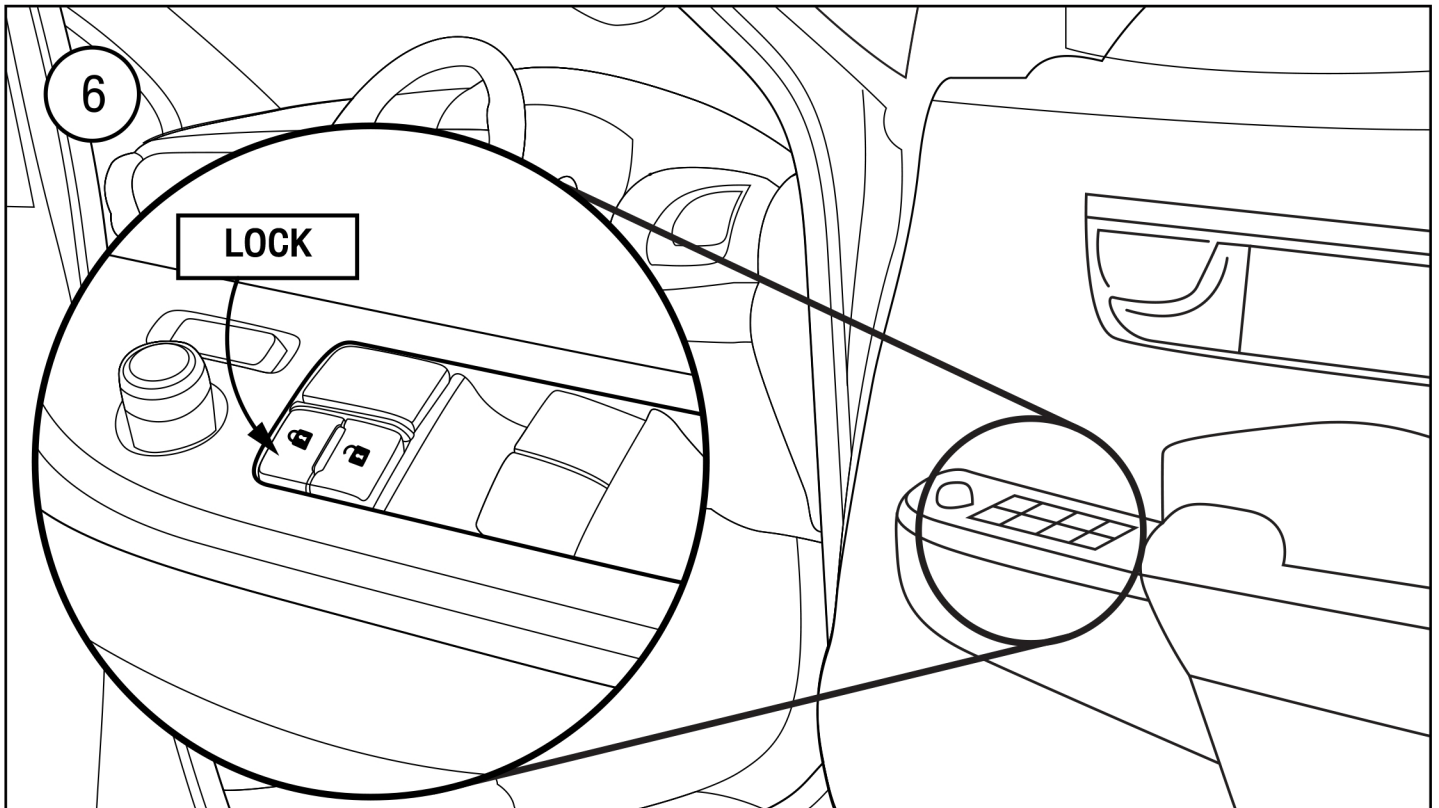
Step of checking Switch on position, begin with turning the key to ON position.



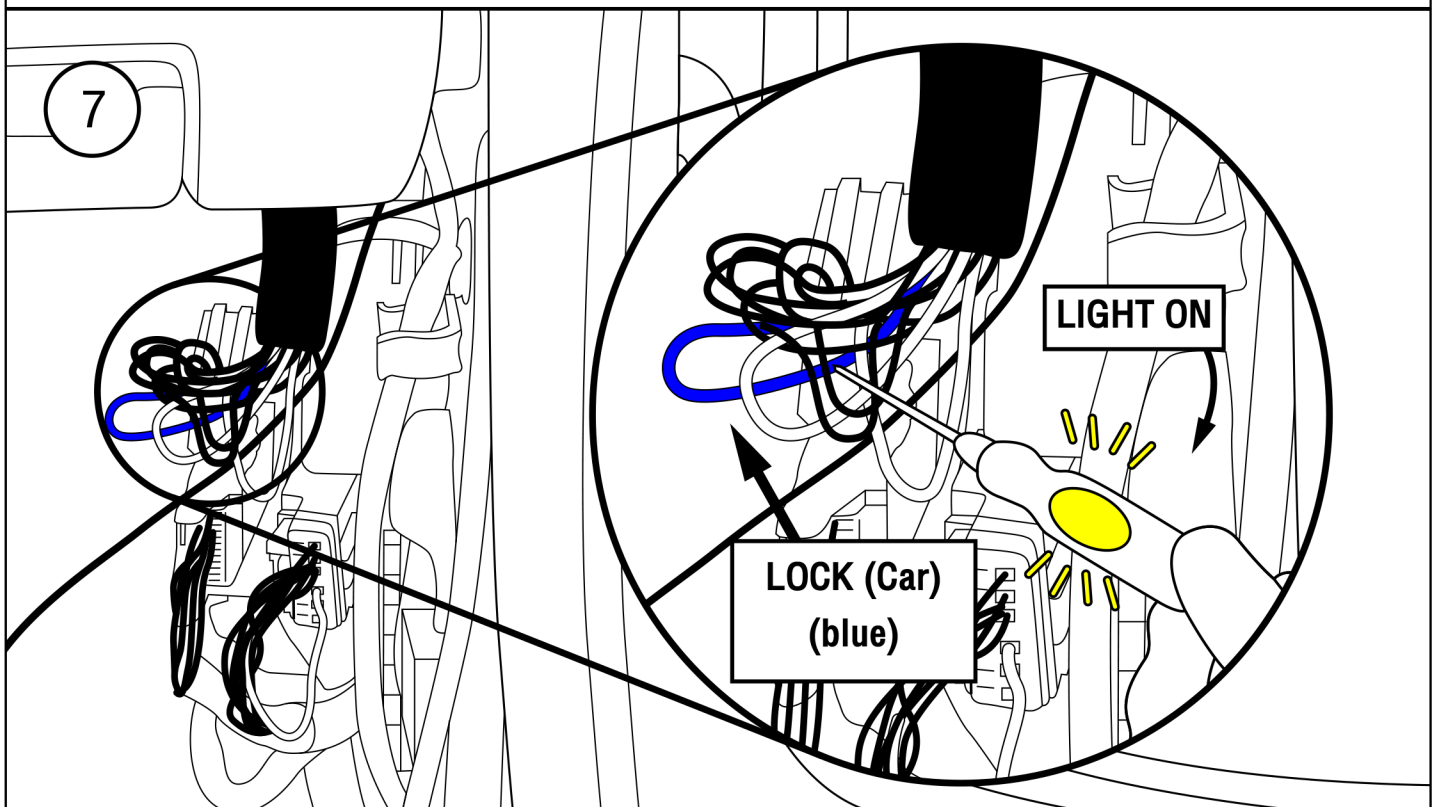
Checking the Switch On of vehicle position by using the Test Lamp kit.



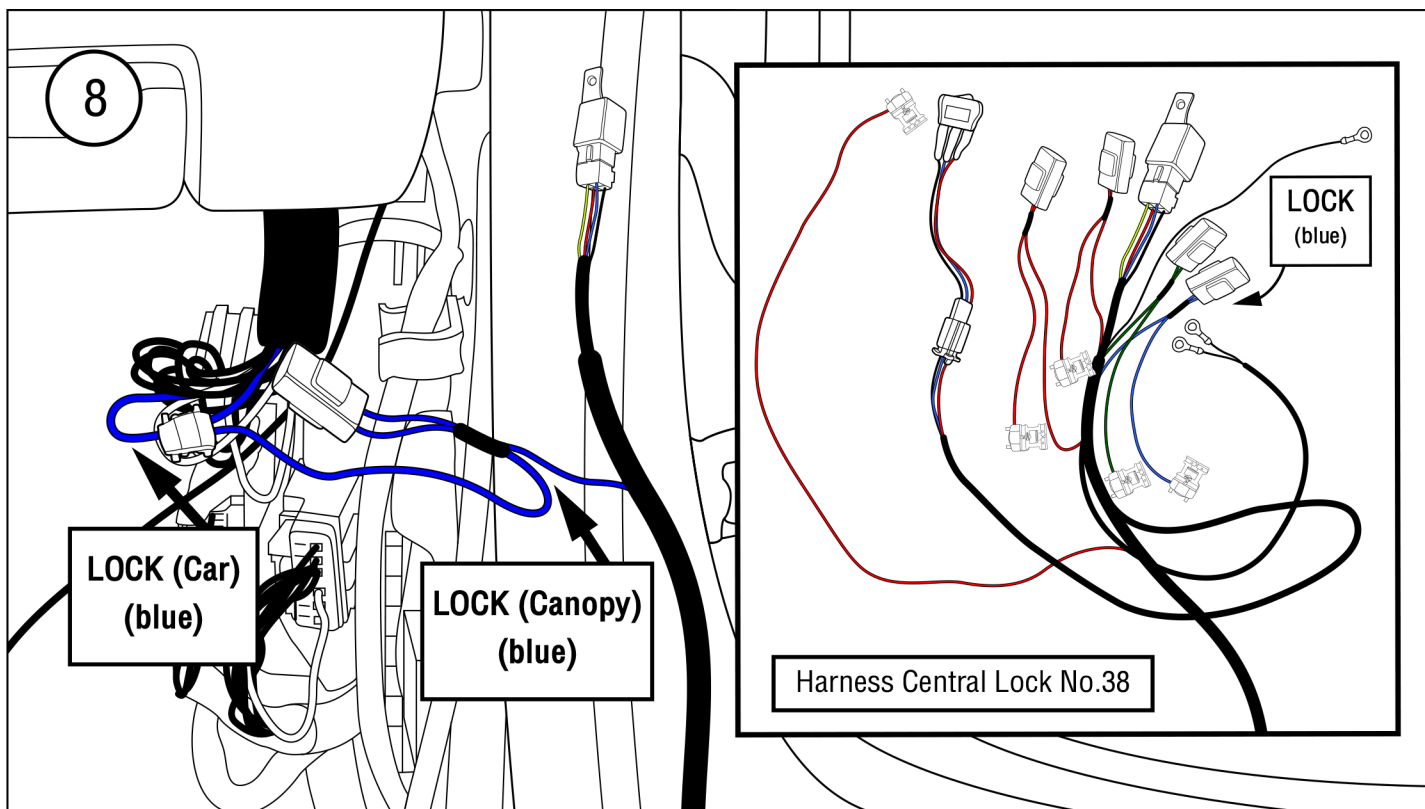
Connect the Harness Central Lock No.38 with the vehicle socket by bring the Red Wiring (Switch ON) of the Harness Central Lock No.38 connects with the yellow/green wiring (Switch ON) of the vehicle wiring.



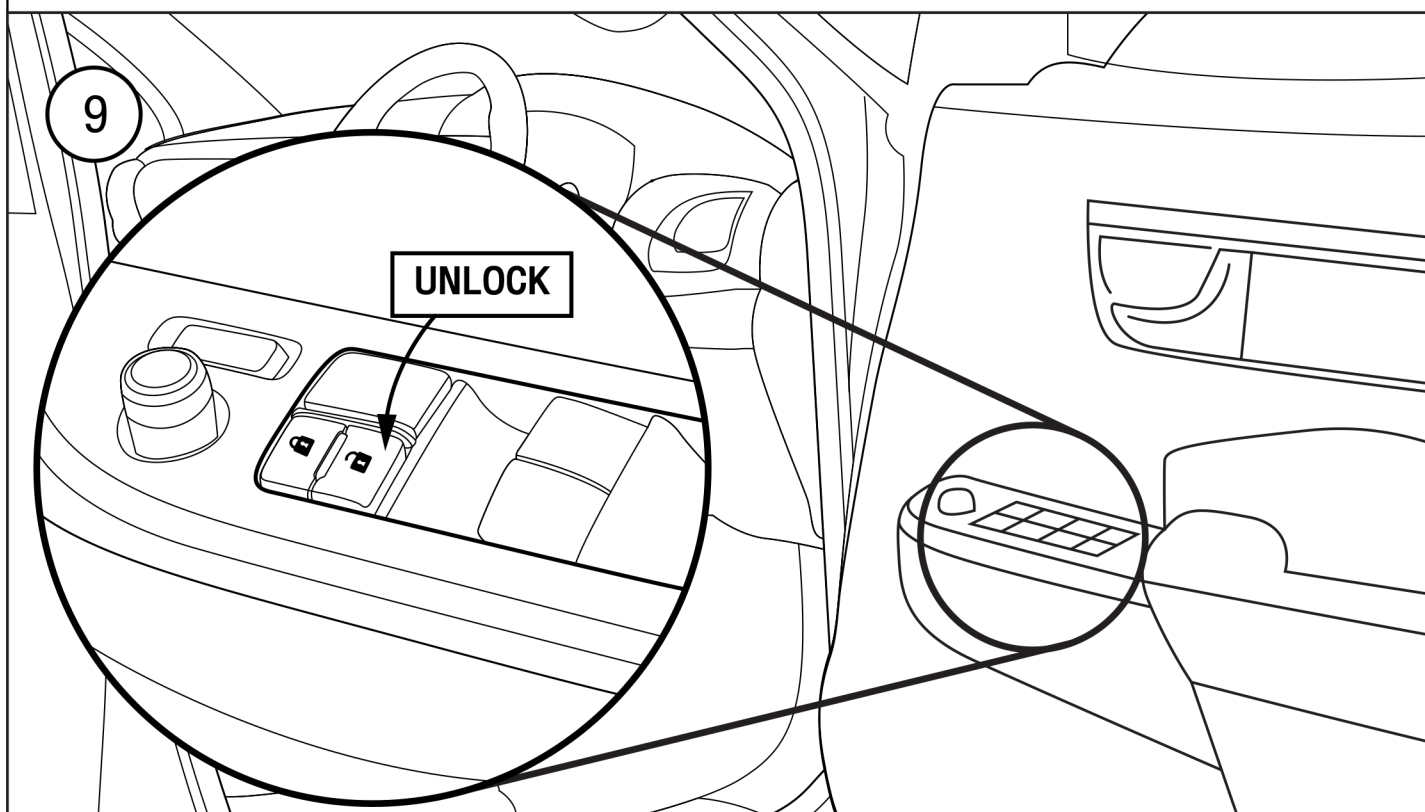
Step of Checking the light of the Central Lock (Lock), begin with push the Lock button at the door panel.



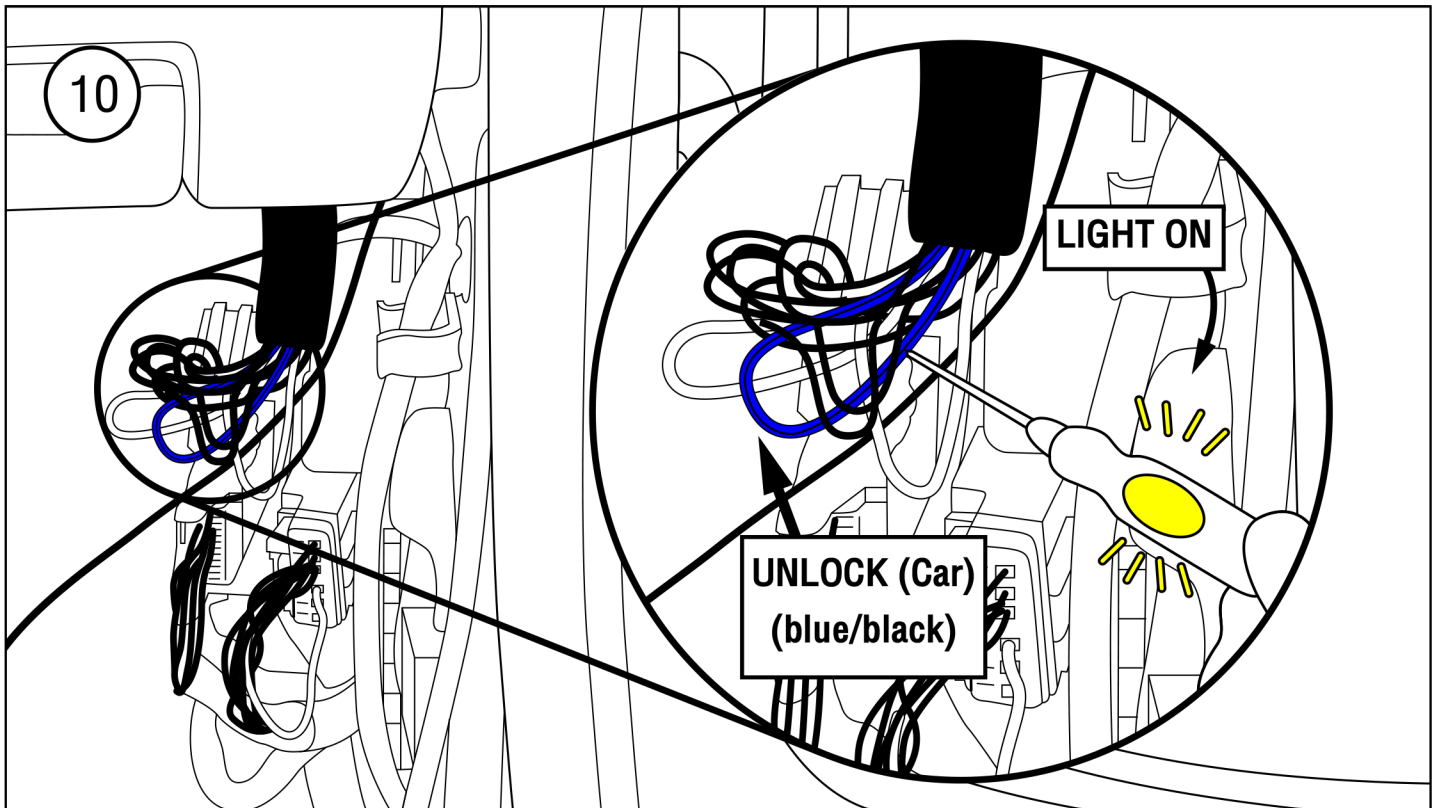
Checking the light of the Central Lock (Lock) of vehicle position by using the Test Lamp kit.



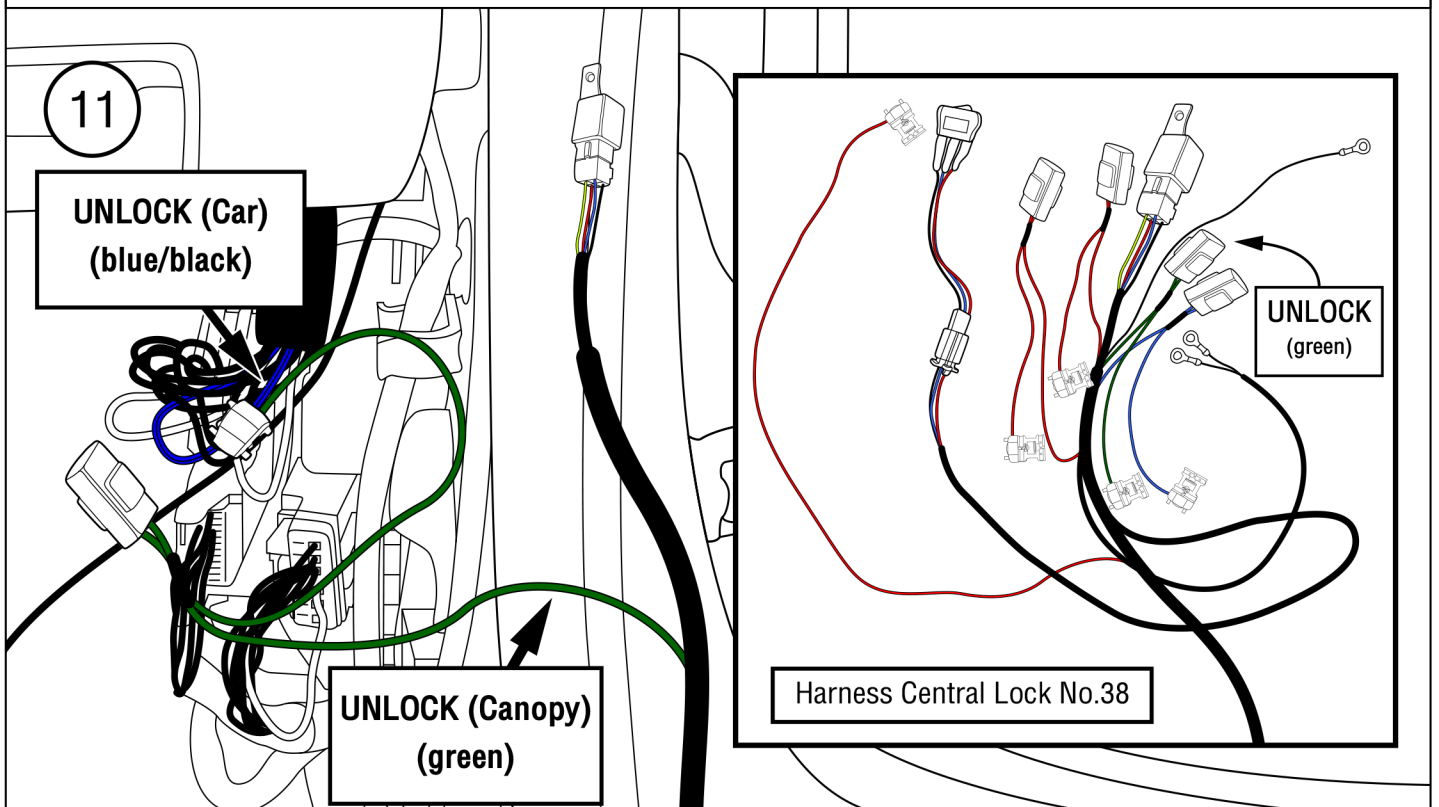
Connects the Blue Wiring (Central Lock/Lock Switch) of the Harness Central Lock No.38 with the Blue wiring of the vehicle (Lock Signal)



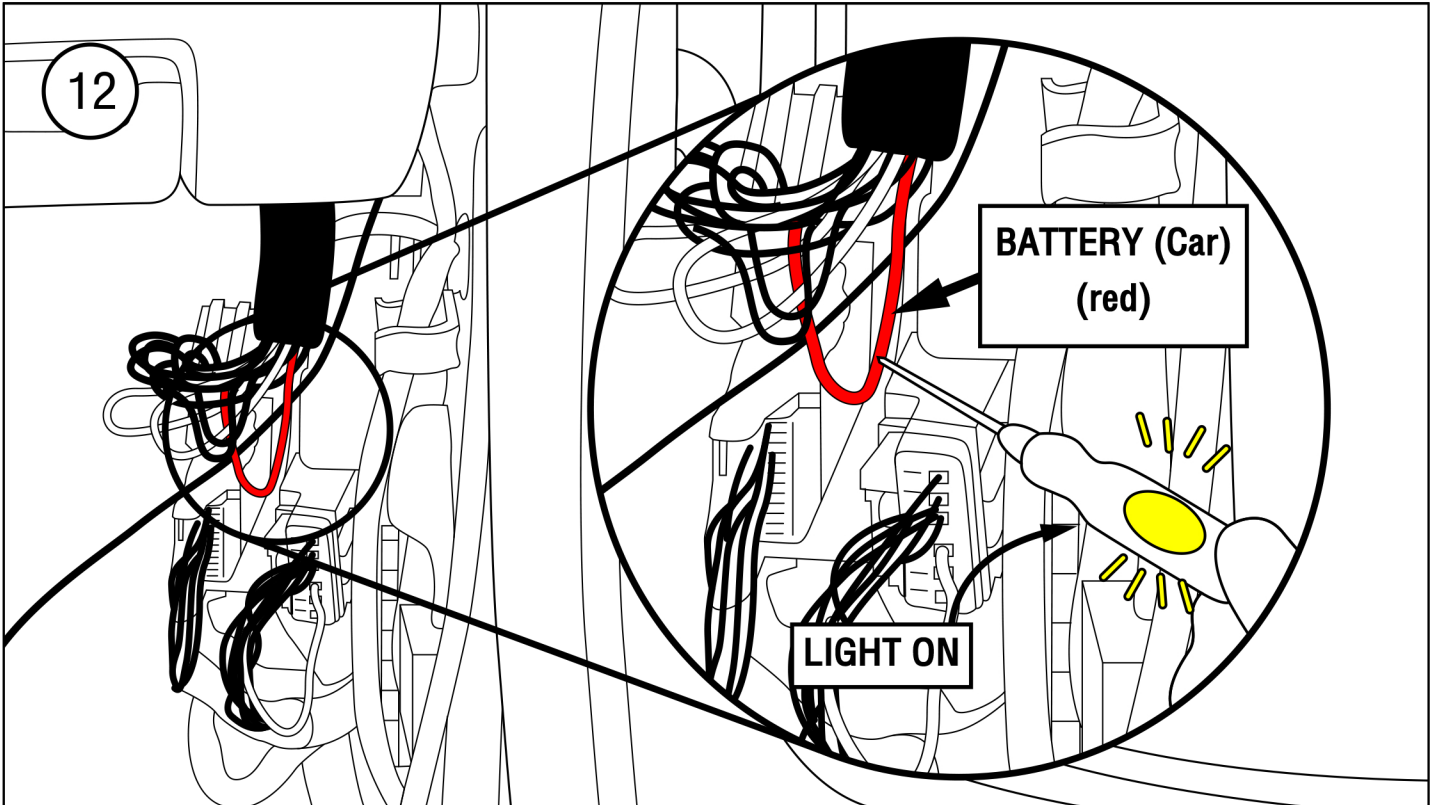
Step of Checking the light of the Central Lock (UnLock), begin with push the UnLock button at the door panel.



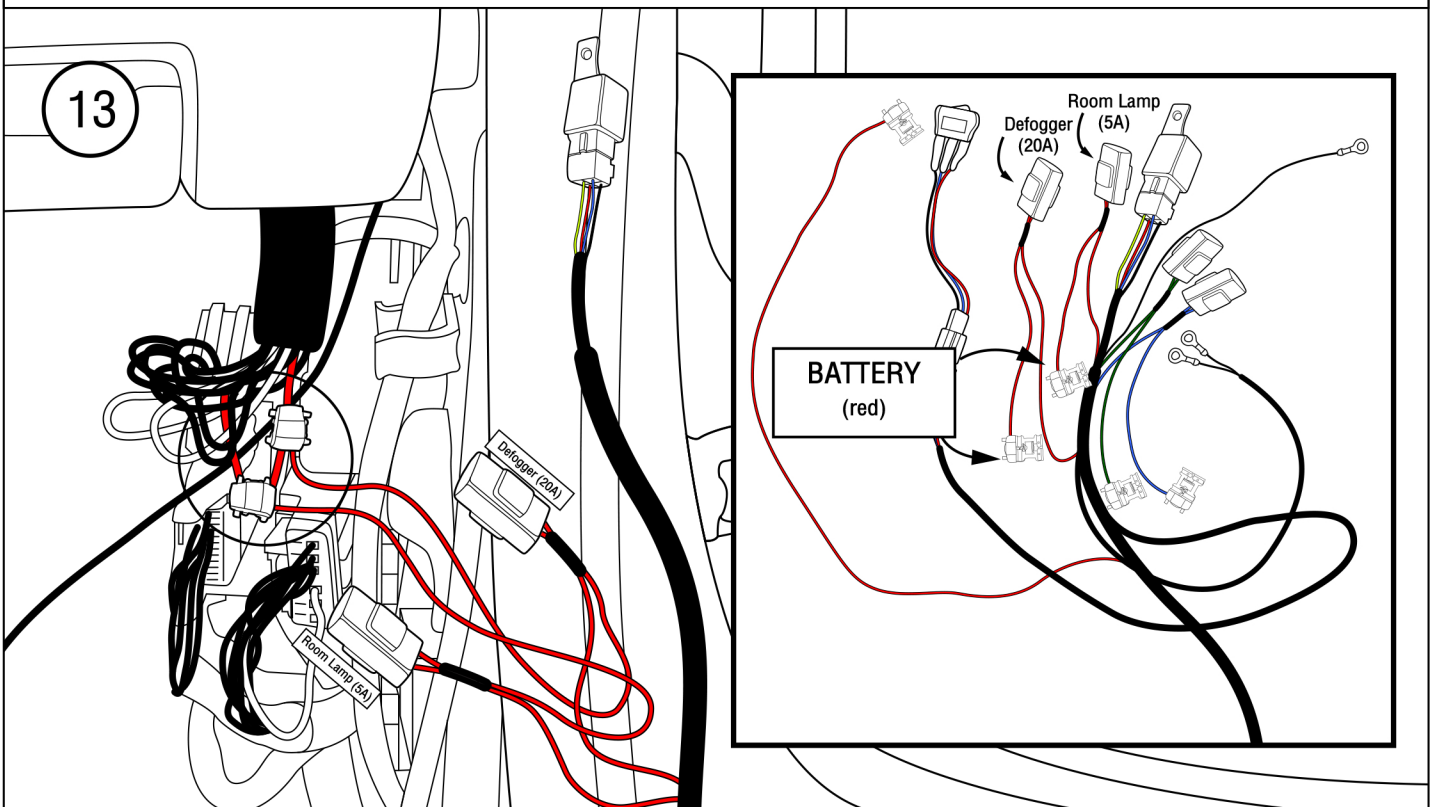
Checking the light of the Central Lock (Lock) of vehicle position by using the Test Lamp kit.



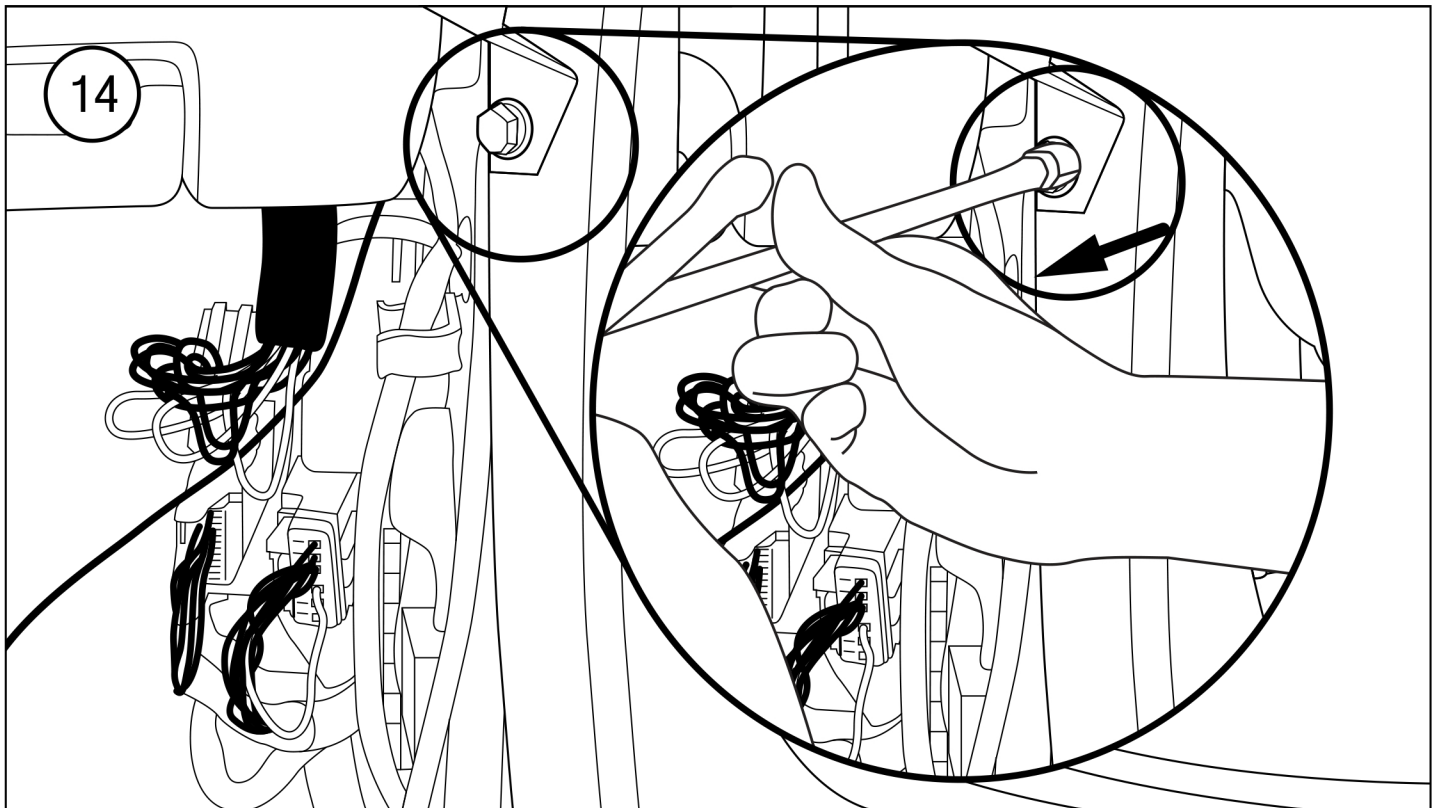
Connects the Green Wiring (Central Lock/Unlock Switch) of the Harness Central Lock No.38 with the Blue/Black Wiring of the vehicle (Unlock Signal).



Checking the Battery (12V) light of the vehicle position by using the Test Lamp kit.



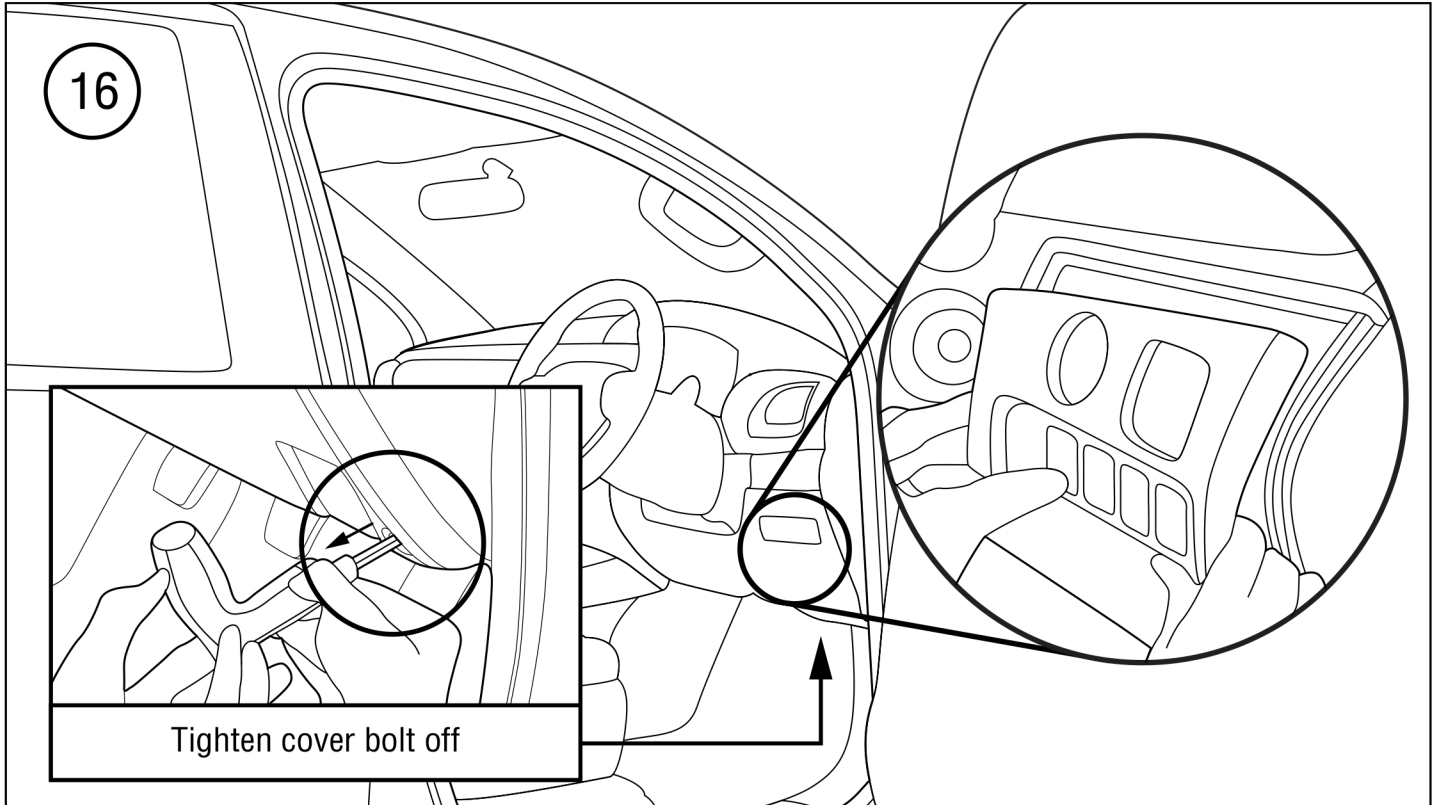
Connects the Red Wiring Defogger (20A) and Red Wiring Room Lamp (5A) of the Harness Central Lock No.38 with the Red Wiring Battery (12V) of the vehicle as shown in picture.



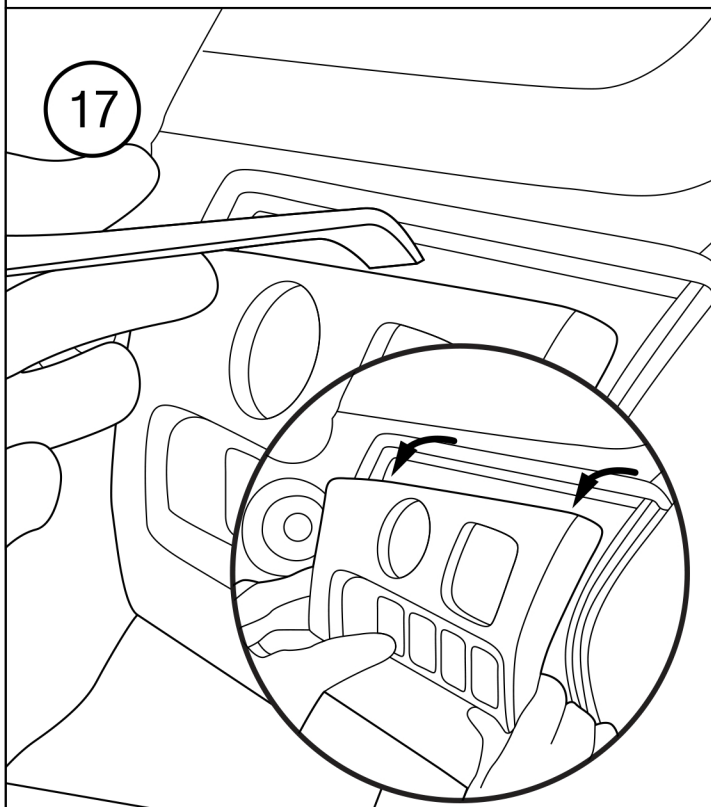
Connecting the Black Wiring (Ground) at the vehicle structure position of the Harness Central Lock No.38 and tighten the screws off.



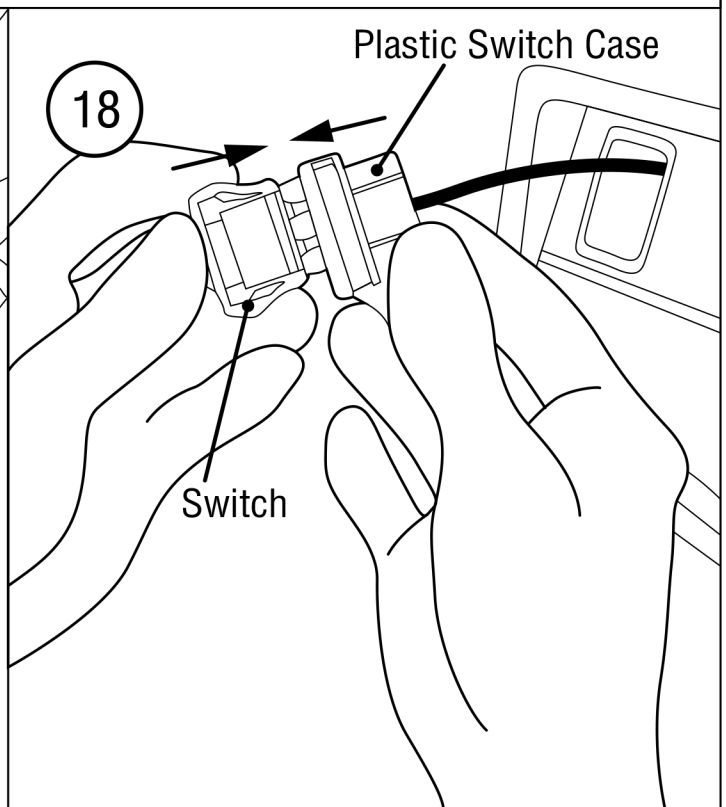
Connects the Black Wiring (GROUND) of the Harness Central Lock No.38 with the vehicle structure, tighten the screws properly.



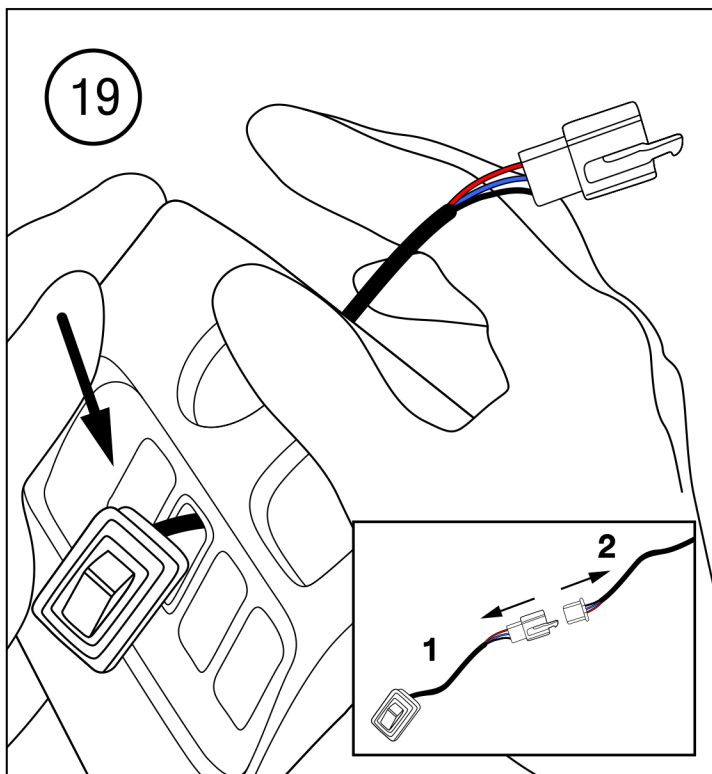
The position of Defogger Switch installation of the
Harness Central Lock No.38.



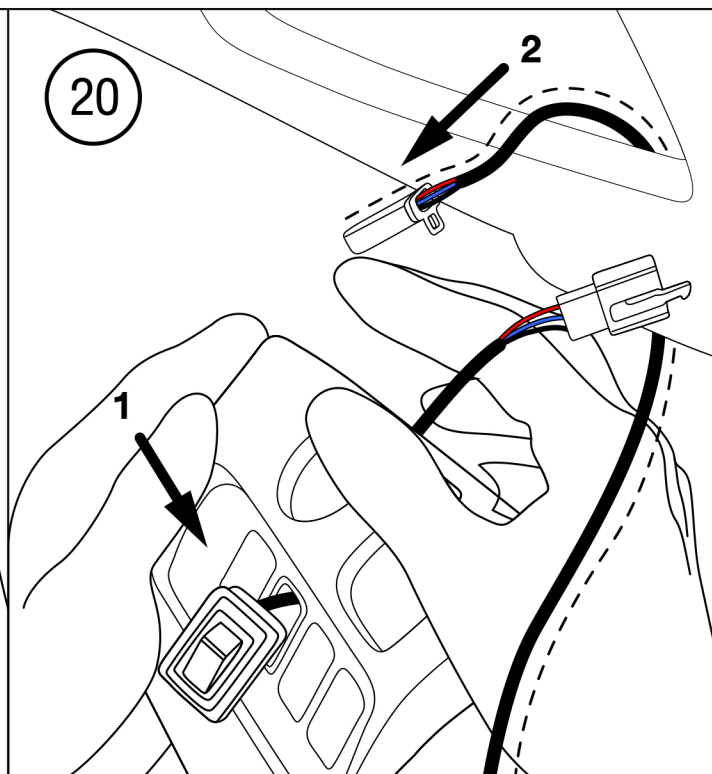
Take off the vehicle switch cover by
using plastic tools.



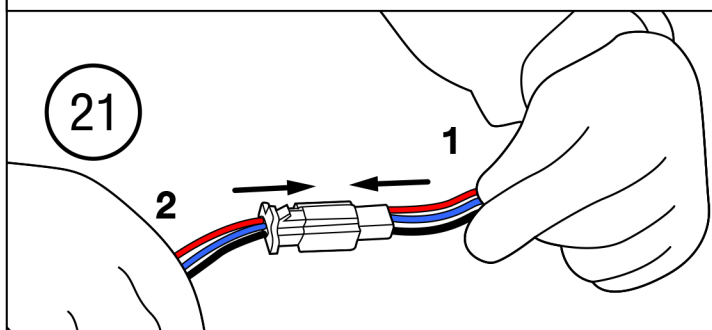
Assemble the Switch Cover with the
Harness Central Lock No.38 Wiring Switch.



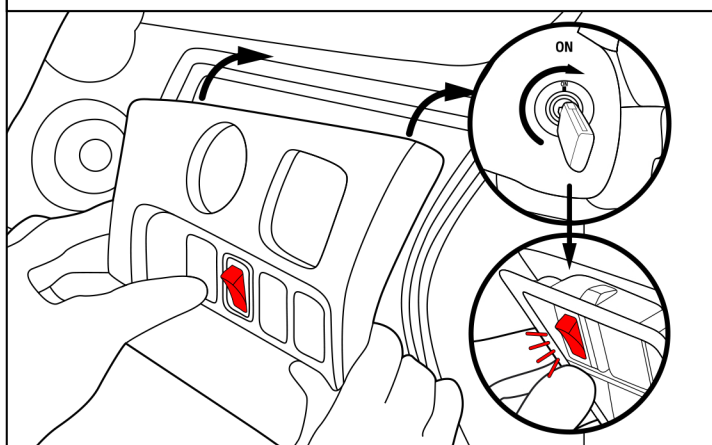
Running the Switch Wiring of the Harness Central Lock No.38 through the Switch Cover pipe of the vehicle.



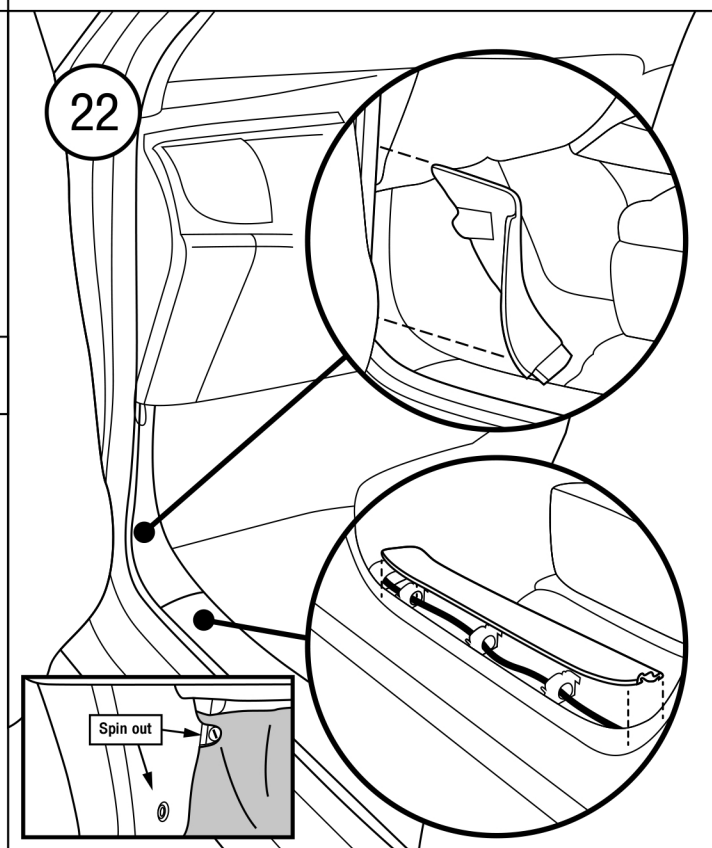
After finish the installation step no.19 then run the 2 wiring via the switch cover pipe under the console.



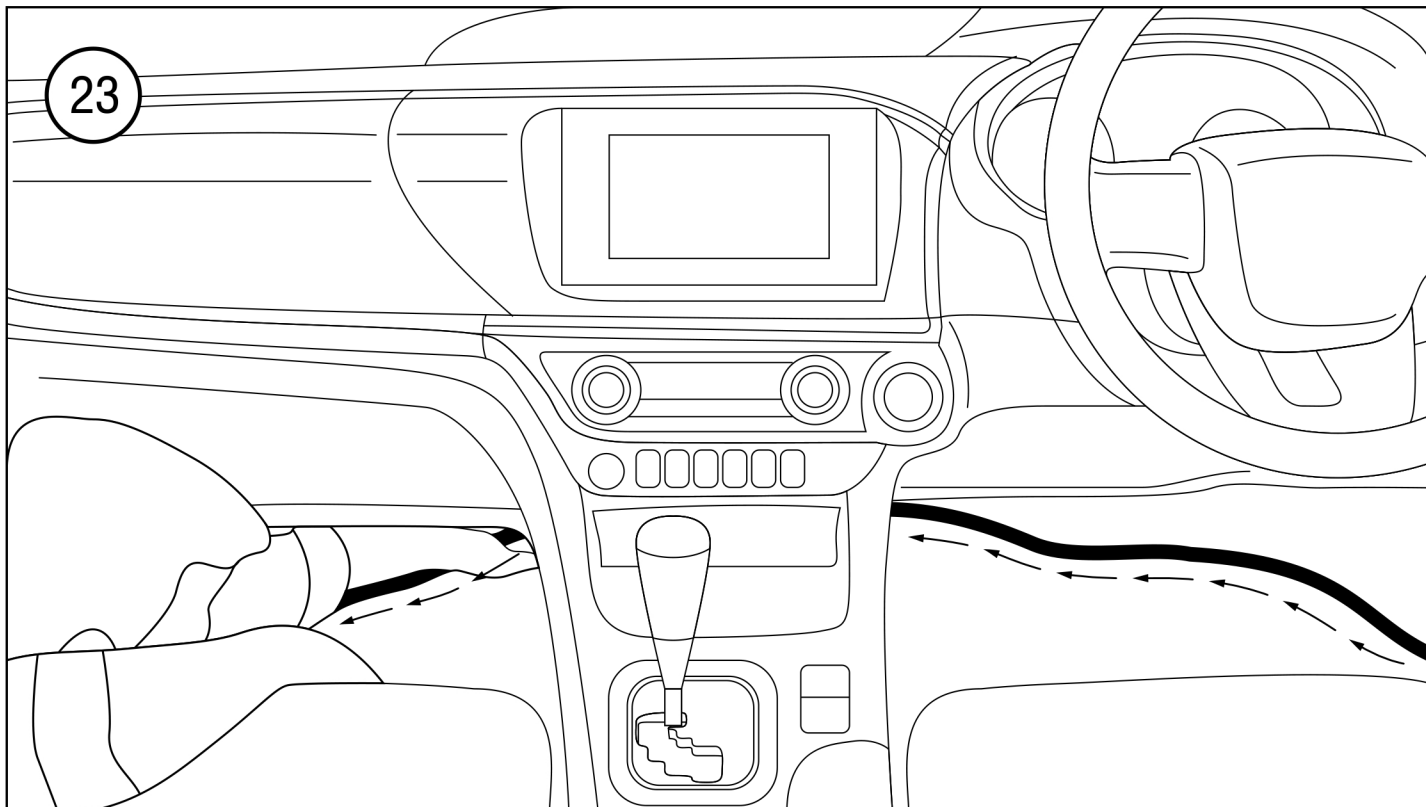
Connects between the 1 wiring and the 2 wiring.



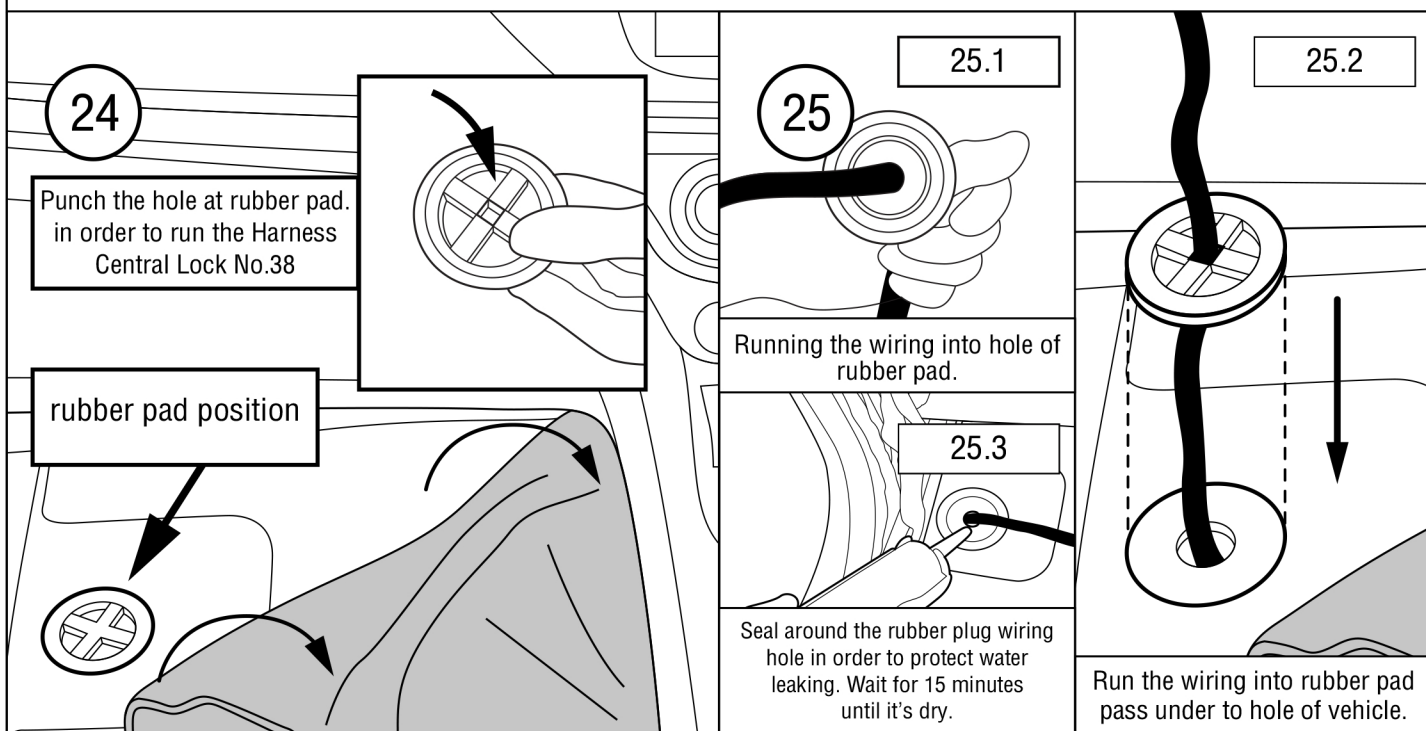
Close the cover. After that, check the working process by turn on and push the switch. The light must be on.



Take off the vehicle wiring cover of the passenger side in order to run the wiring from the driver side through the passenger side.

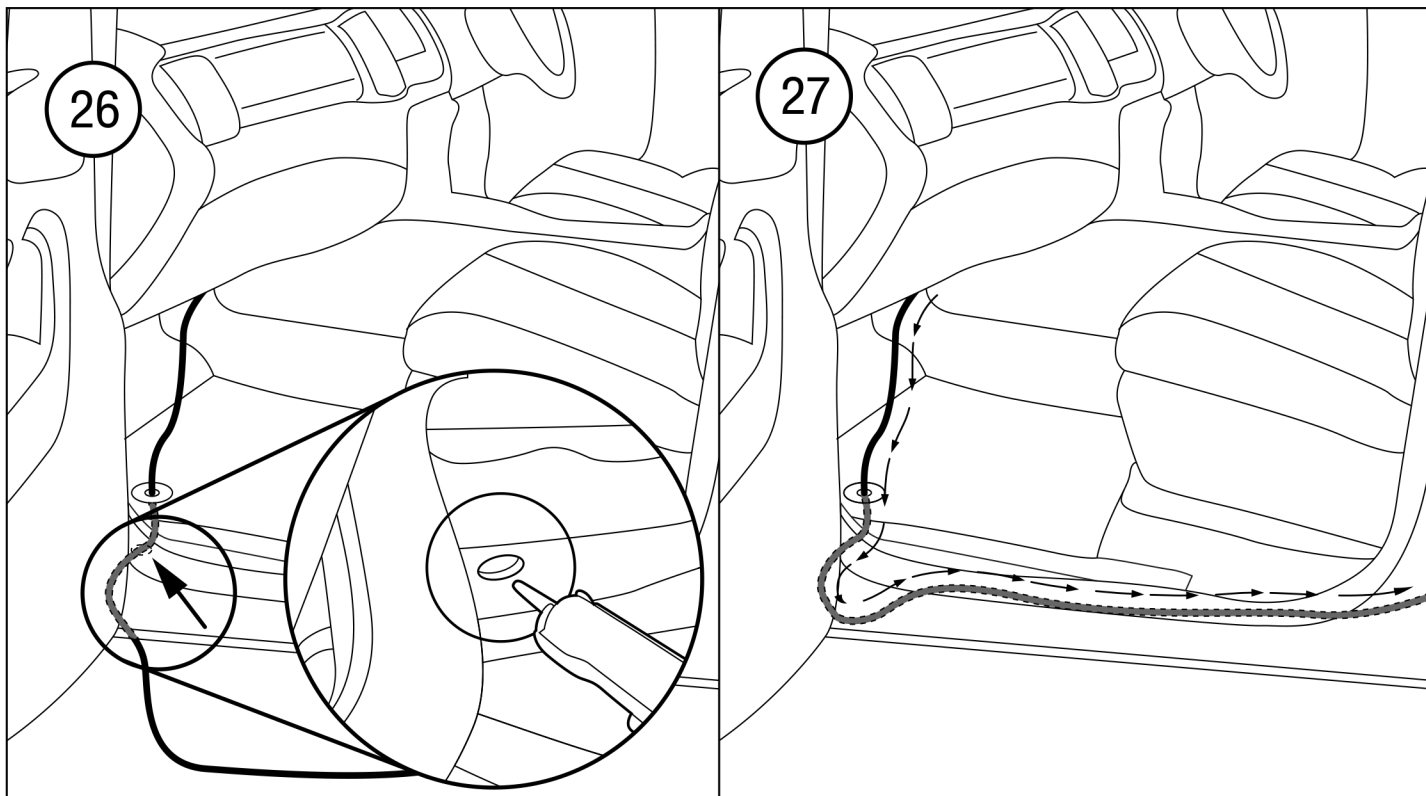


Running the wiring from the driver side through the passenger side as shown in picture.



Take off the vehicle rubber pad in order to keep/hide the wiring.

Running the wiring, Silicone seal and Run the wiring pass under the structure of vehicle process.



Run the wiring into rubber pad pass under to hole of vehicle and silicone seal the hole under the vehicle as shown in picture.

Run the wiring pass through the structure of the vehicle as shown in picture.

28 The Step of wiring running diagram

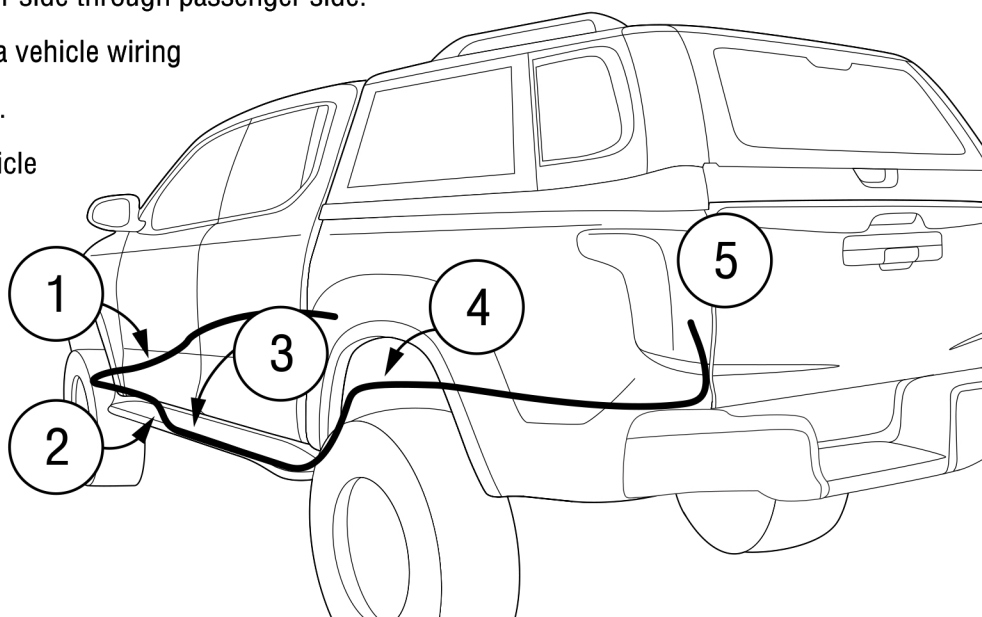
Point 1 Wiring running from driver side through passenger side.

Point 2 Running canopy wiring via vehicle wiring hole/pipe along under the chassis.

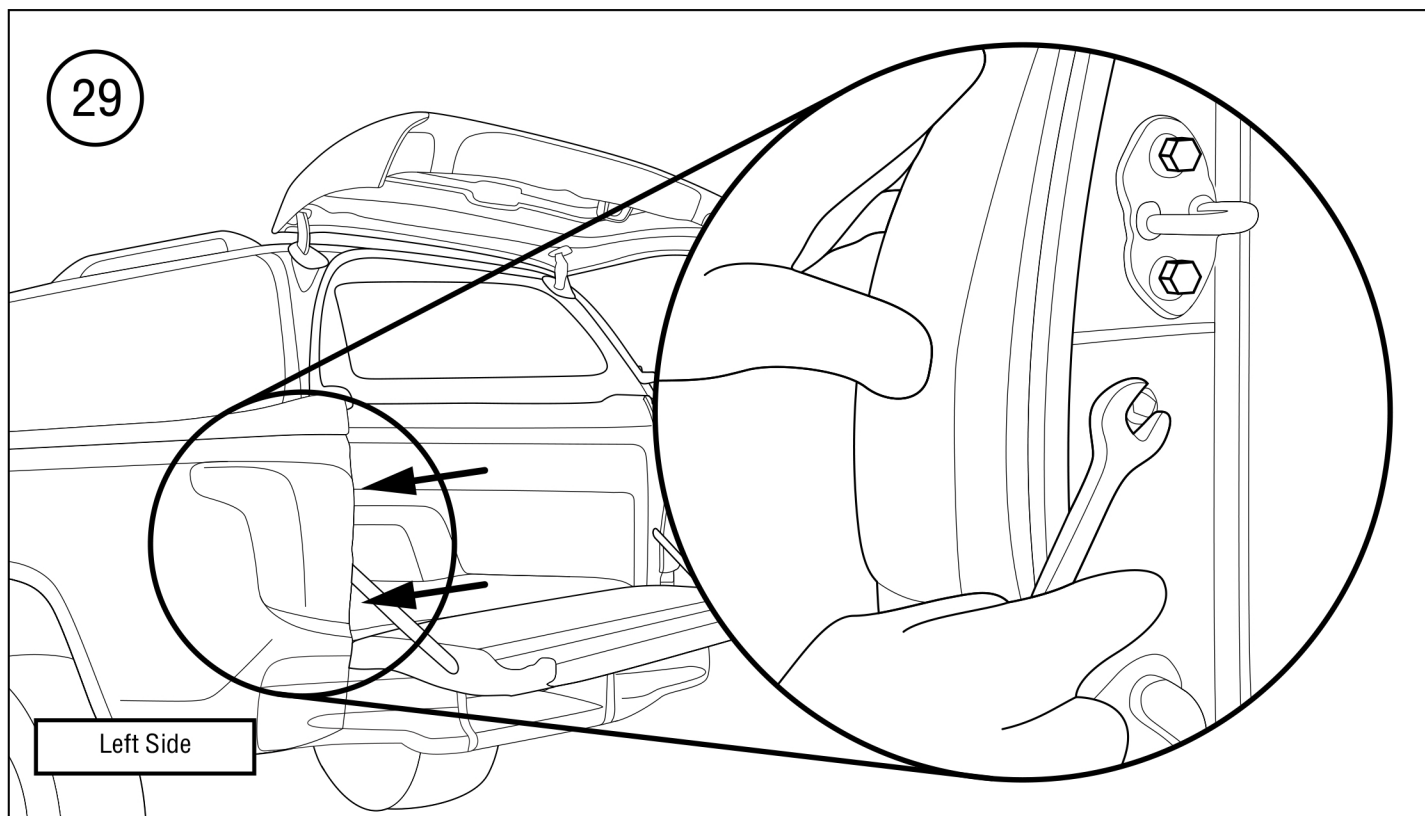
Point 3 Wiring that run under vehicle along the chassis.

Point 4 Wiring that run via chassis at the fender area.

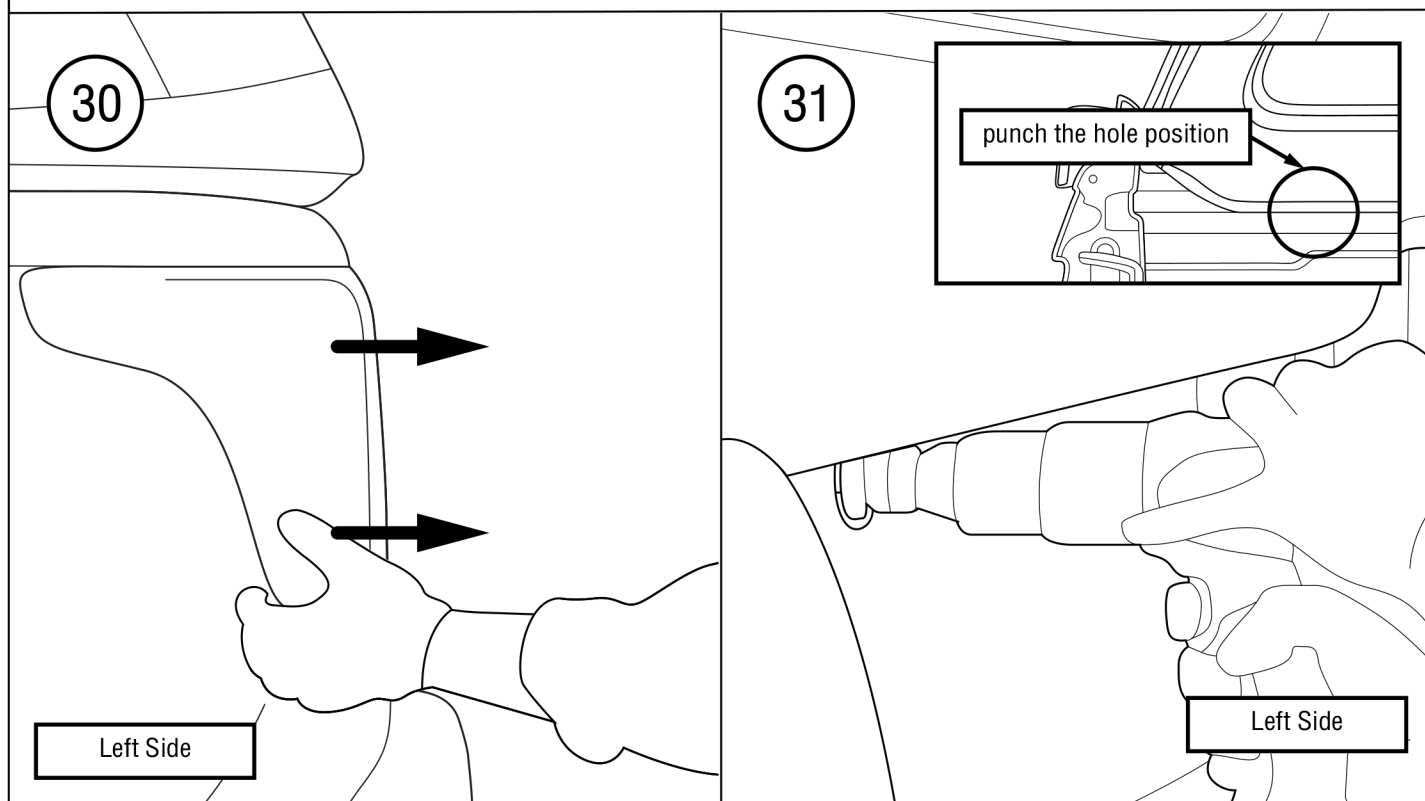
Point 5 Wiring that running up the rear light in order to connect with the other wiring set.



The Step of wiring running diagram for the Harness Central Lock No.38

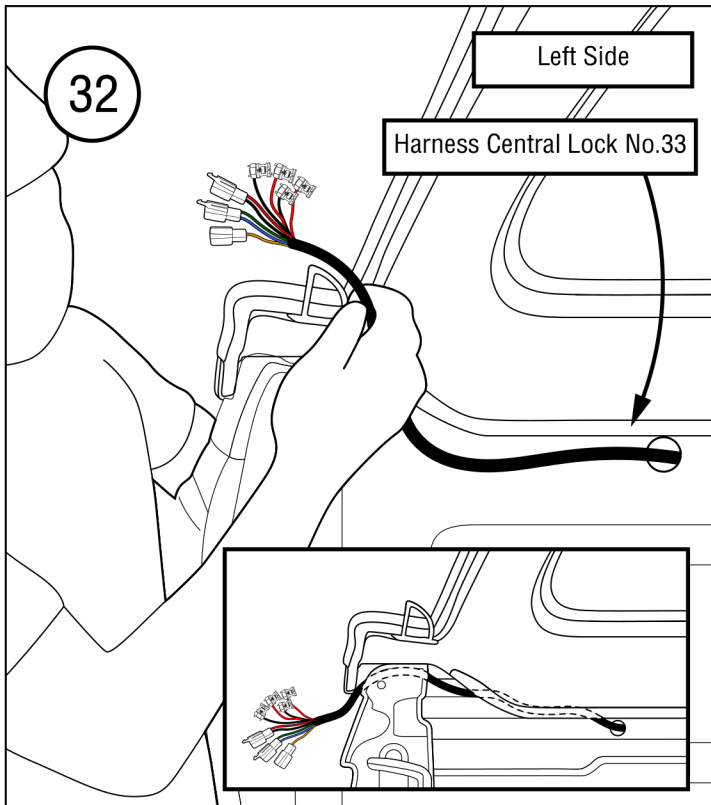


Take off the Rear Light by using wrench No.10

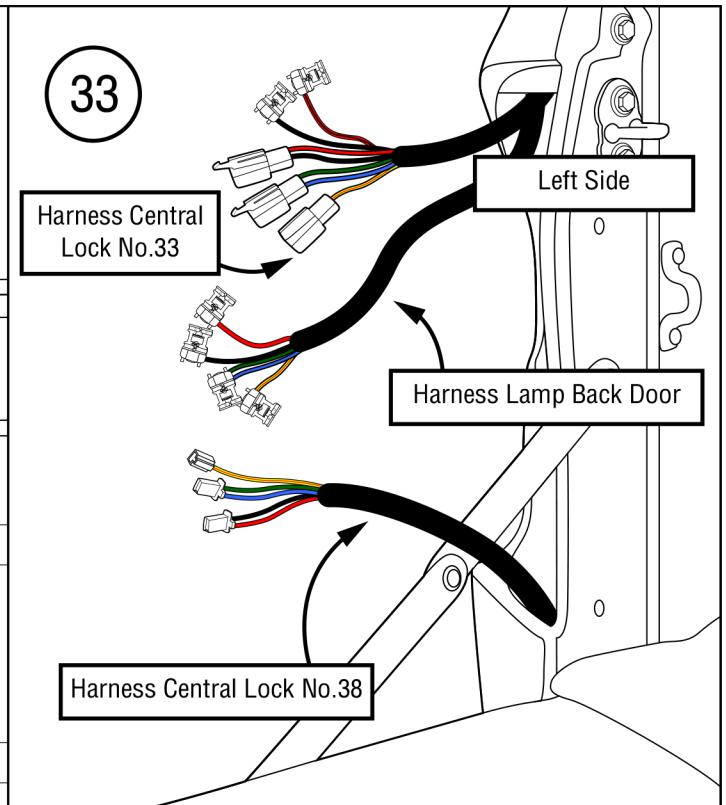


Take off the Rear Light vehicle.

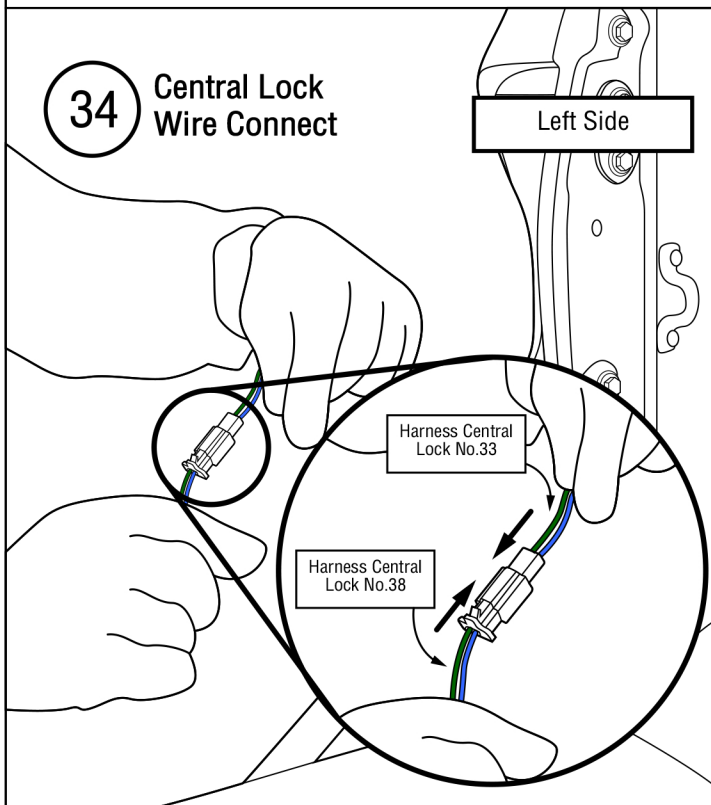
Punch the hole at the liner around 16mm. in order to run the Harness Central Lock No.33 through the vehicle tub channel out of the Rear Light socket .



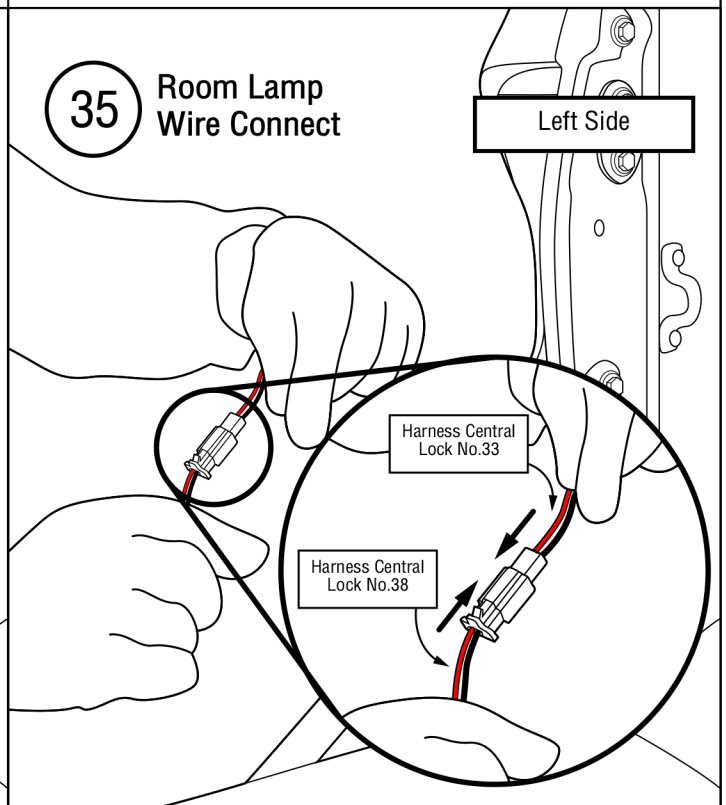
Running the Harness Central Lock No.33 along the vehicle tube through the rear light.



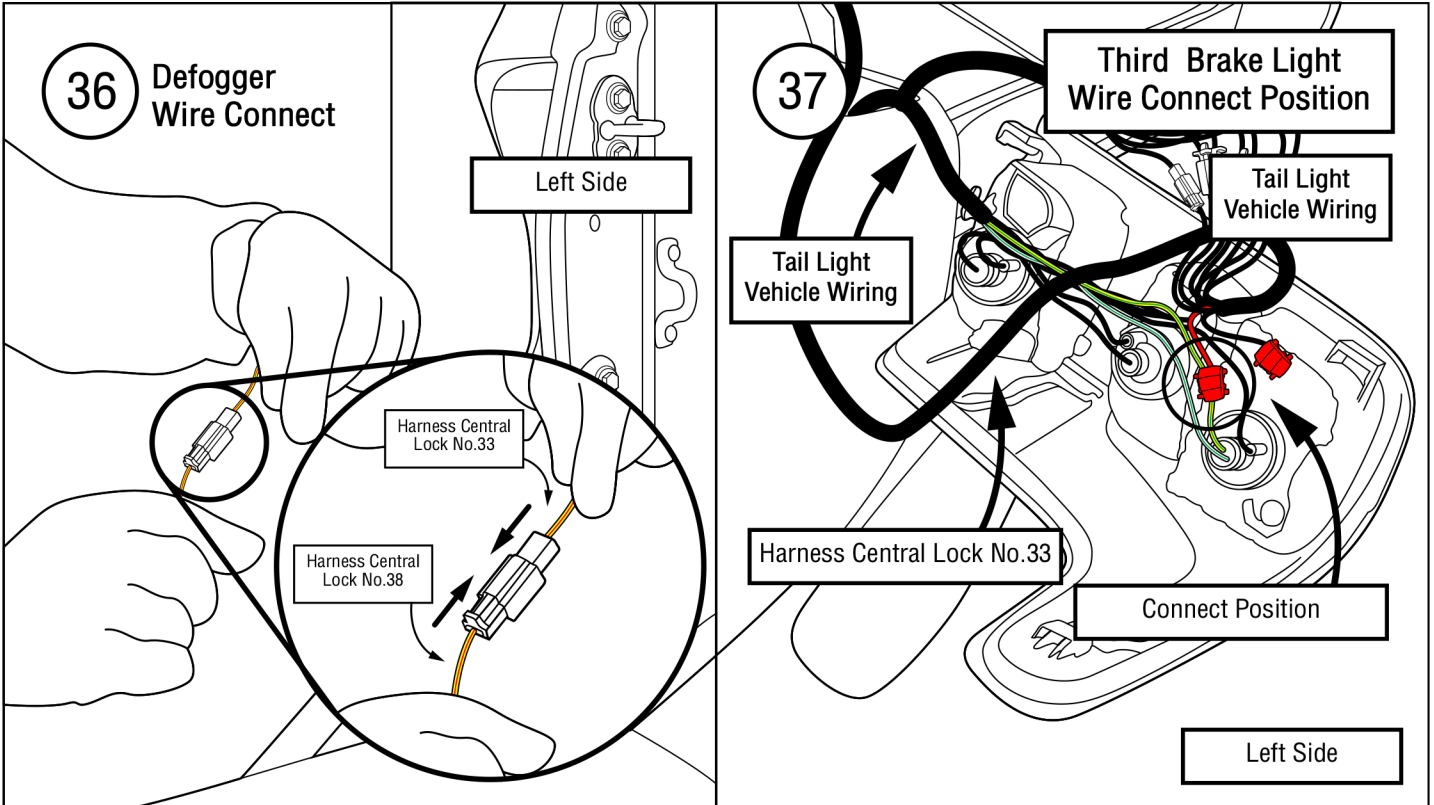
The Harness Central Lock No.33 wiring, Harness Lamp Back Door on vehicle position and the Harness Central Lock No.38 wiring set.



The process of connecting the Central Lock (BL,DG) wiring of the Harness Central Lock No.33 with the Central Lock (BL,DG) wiring of the Harness Central Lock No.38.

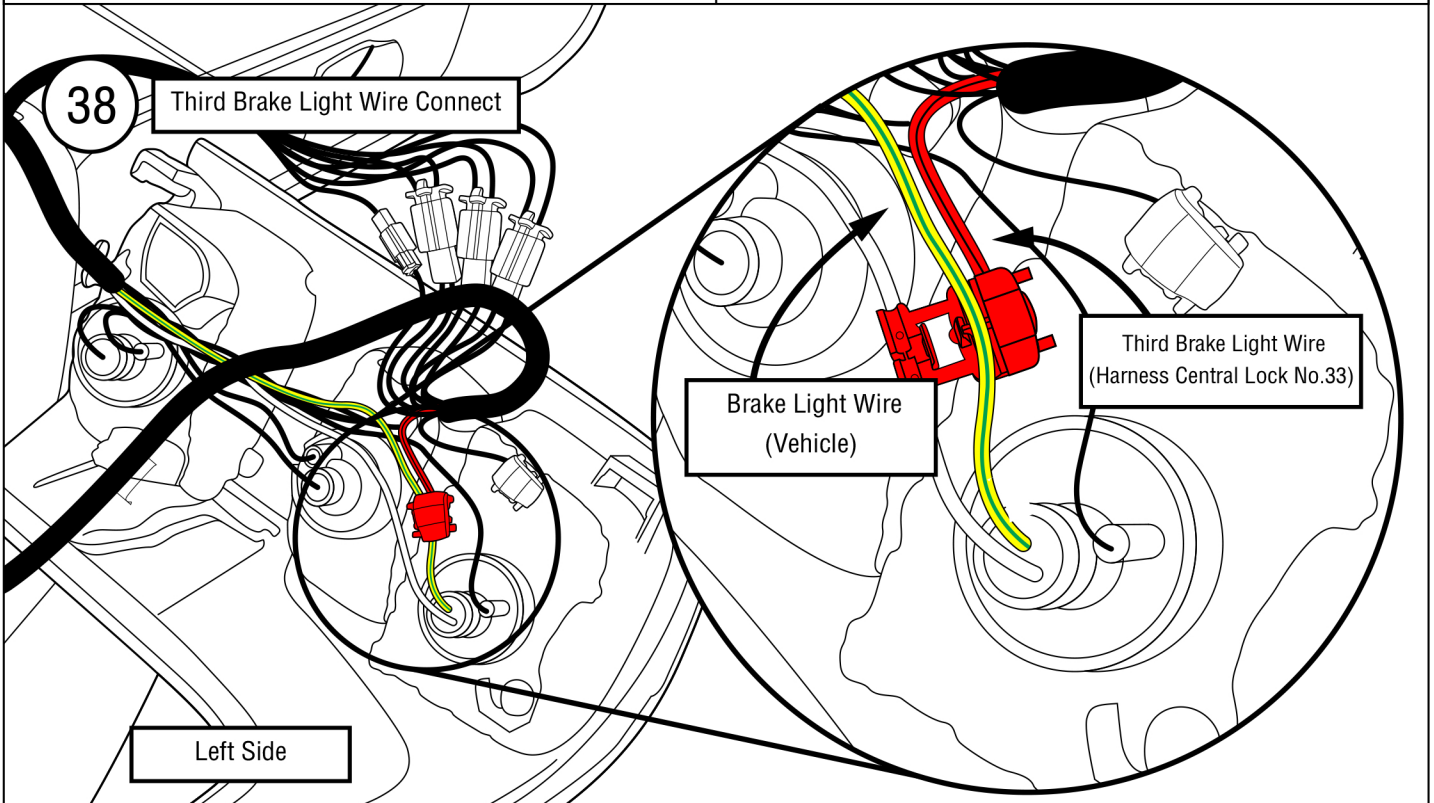


The process of connecting the Room Lamp (RD,BK) wiring of the Harness Central Lock No.33 with the Room Lam (RD,BK) wiring of the Harness Central Lock No.38.

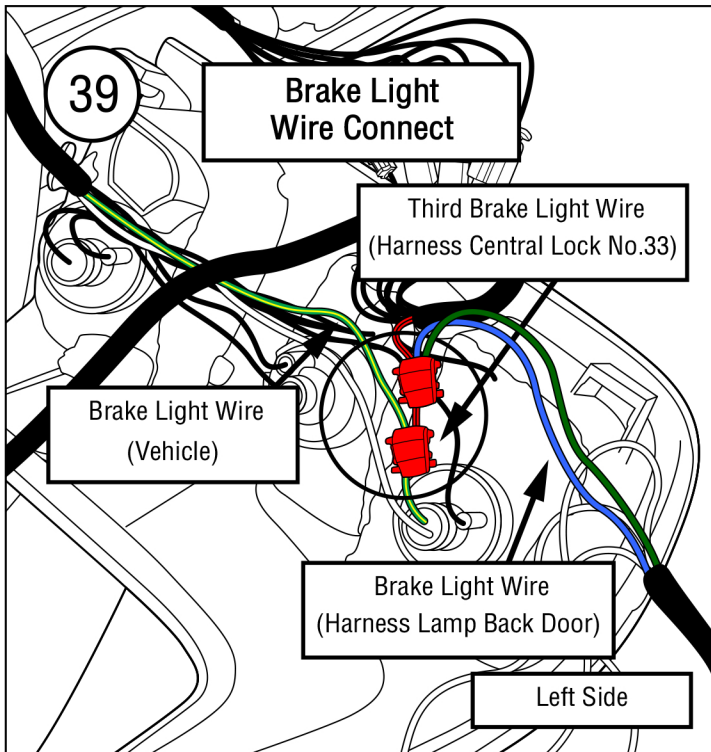


The step of connecting the Defogger (YL/RD) wiring of the Harness Central Lock No.33 with the Defogger (YL/RD) wiring of the Harness Central Lock No.38.

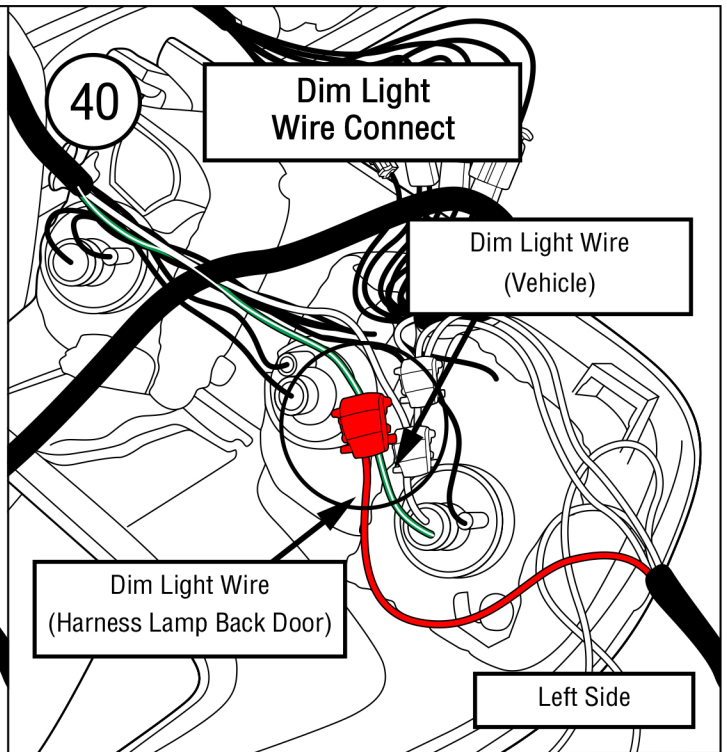
The position of connecting the Red and Black Wiring of the Third Brake Light (RD,BK) circuit of the Harness Central Lock No.33 with the vehicle rear light.



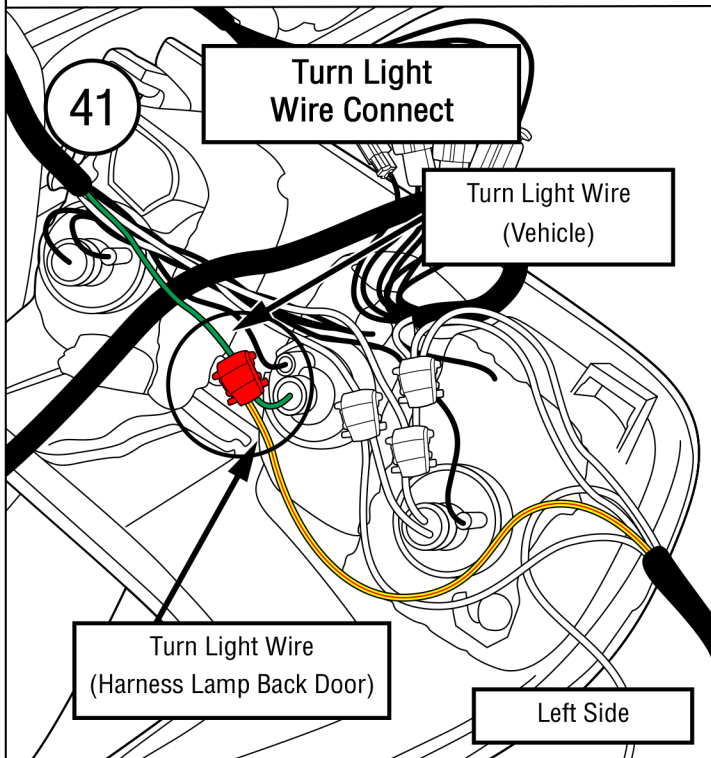
Bring the Red/Black Wiring, Third Brake Light (RD/BK) of the Harness Central Lock No.33 connecting with Yellow/Green (YL/LG) Brake wiring of the vehicle rear light.



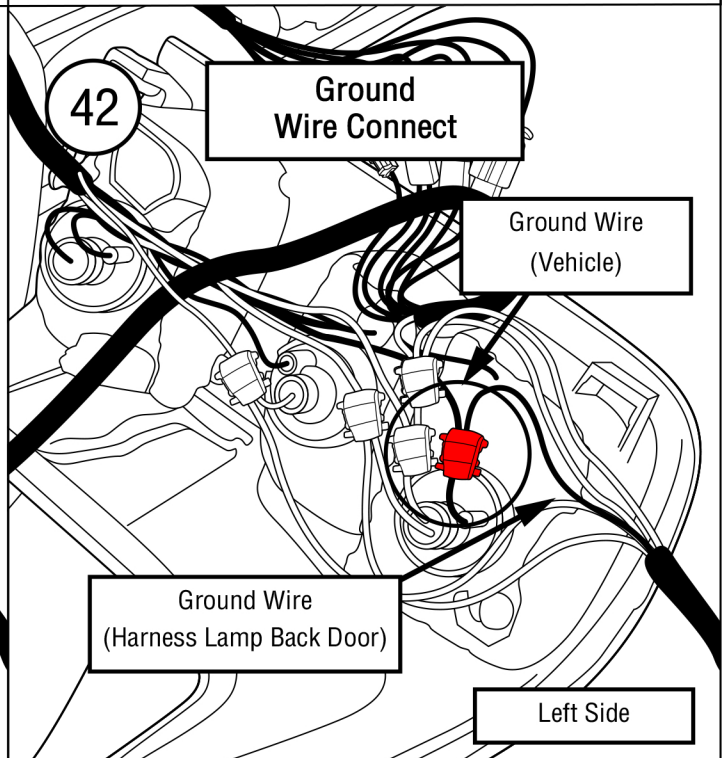
Bring the blue and green wiring, Brake Light of the Harness Lamp Back Door connecting with Green/Yellow Wiring (Brake Light) of the Vehicle.



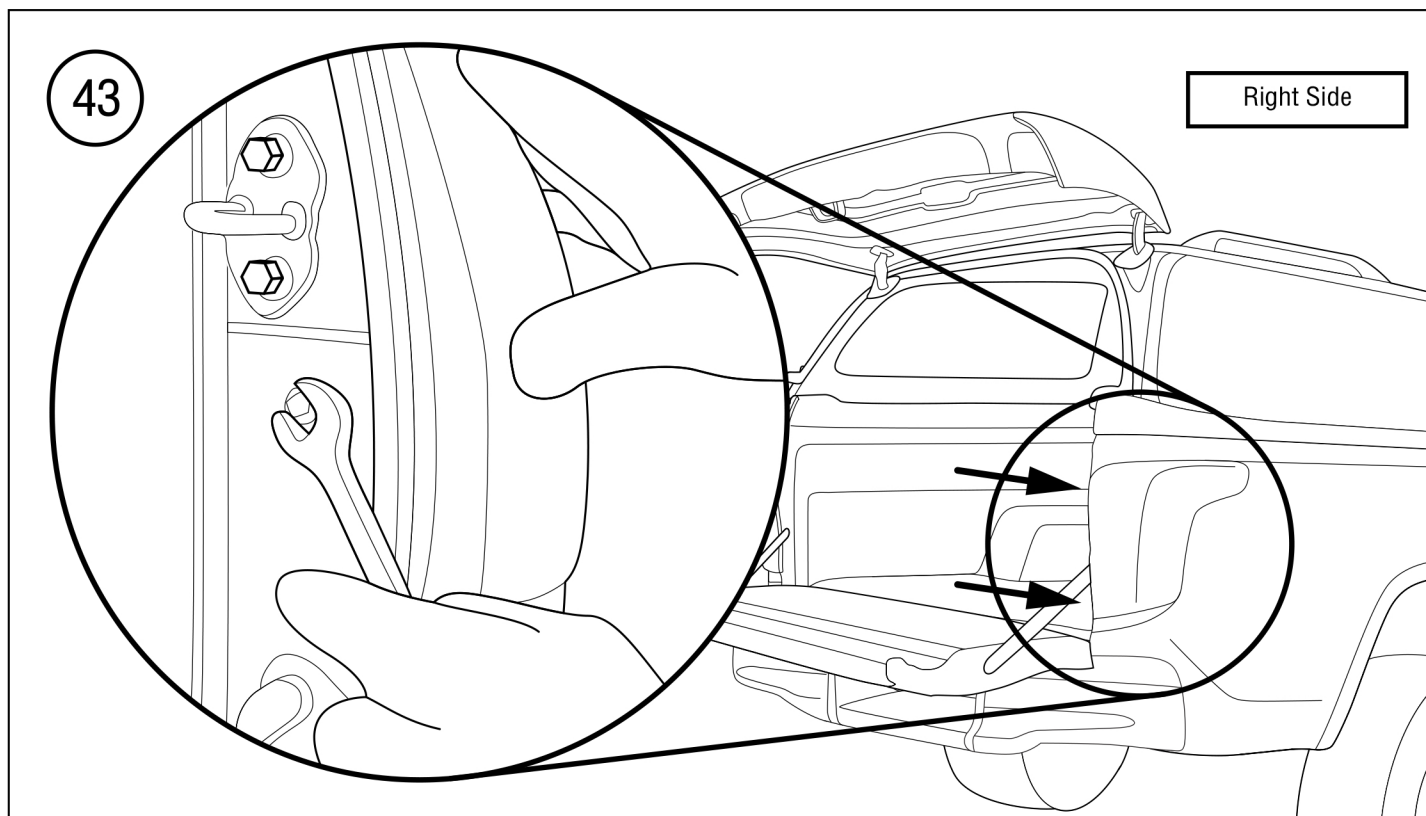
Bring the red wiring, Dim Light of the Harness Lamp Back Door connecting with Green/white Wiring (Dim Light) of the Vehicle.



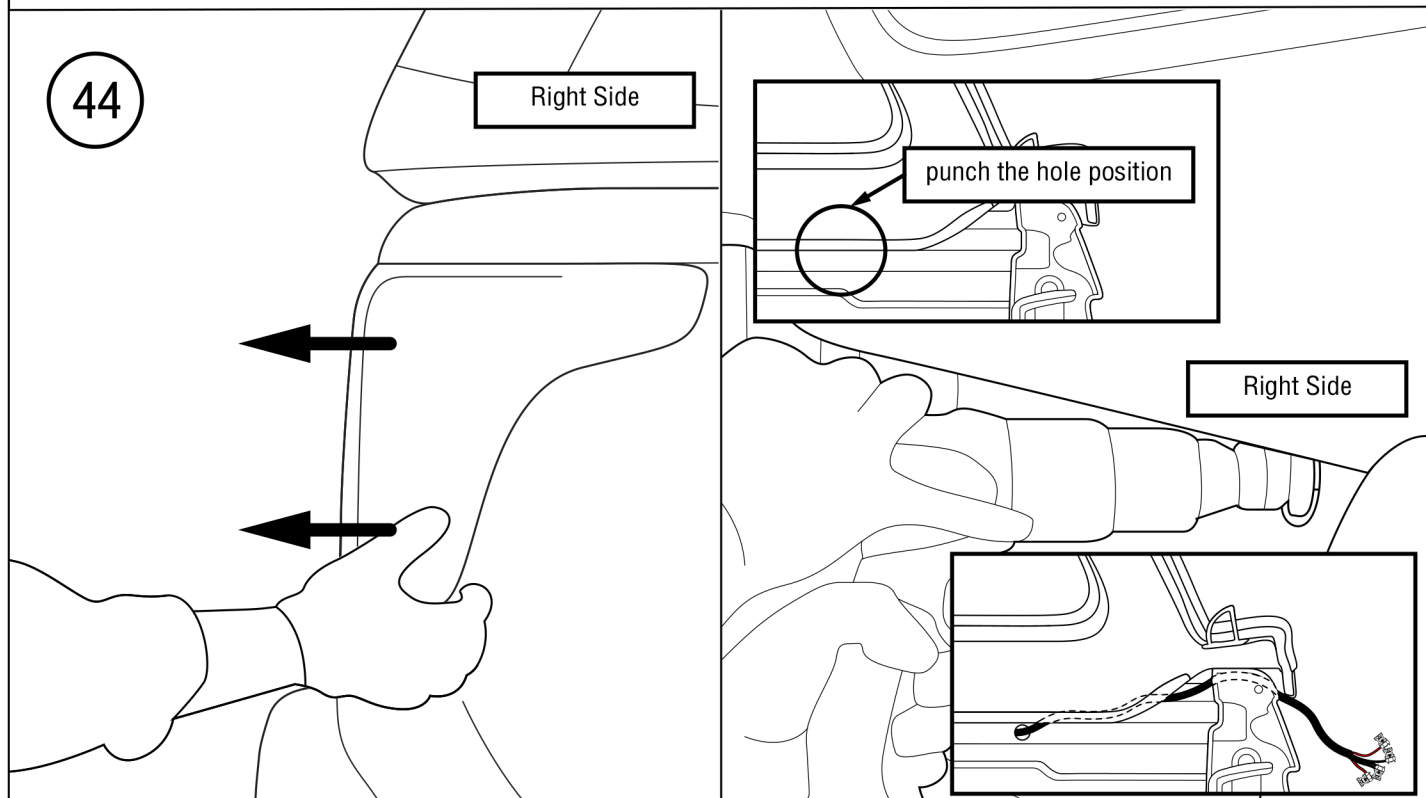
Bring the yellow/red wiring, Turn light of the Harness Lamp Back Door connecting with Turn light of the vehicle (green wiring).



Bring the black Wiring, Ground wiring (BK) of the Harness Lamp Back Door connecting with Ground wiring of the vehicle black wire (BK).

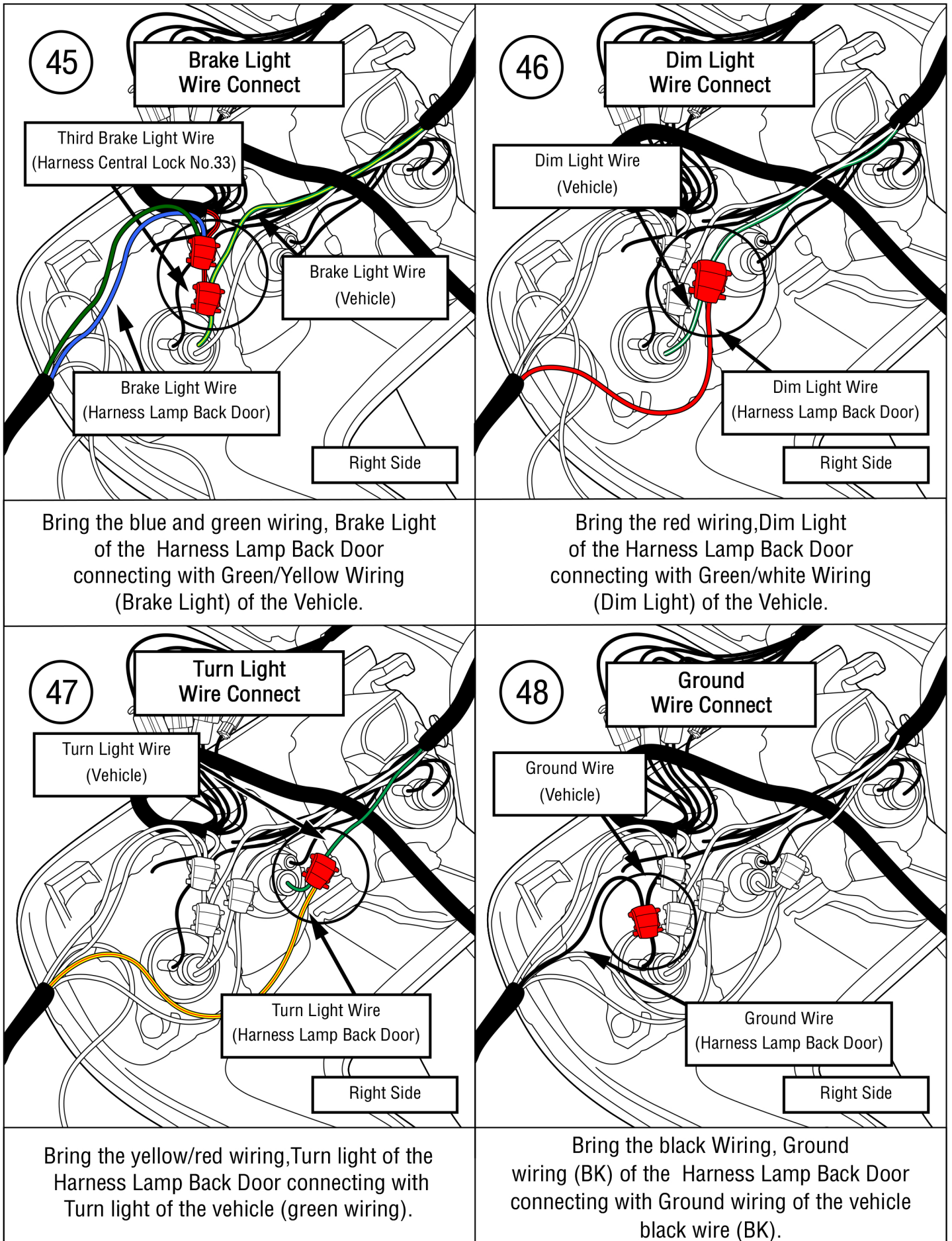


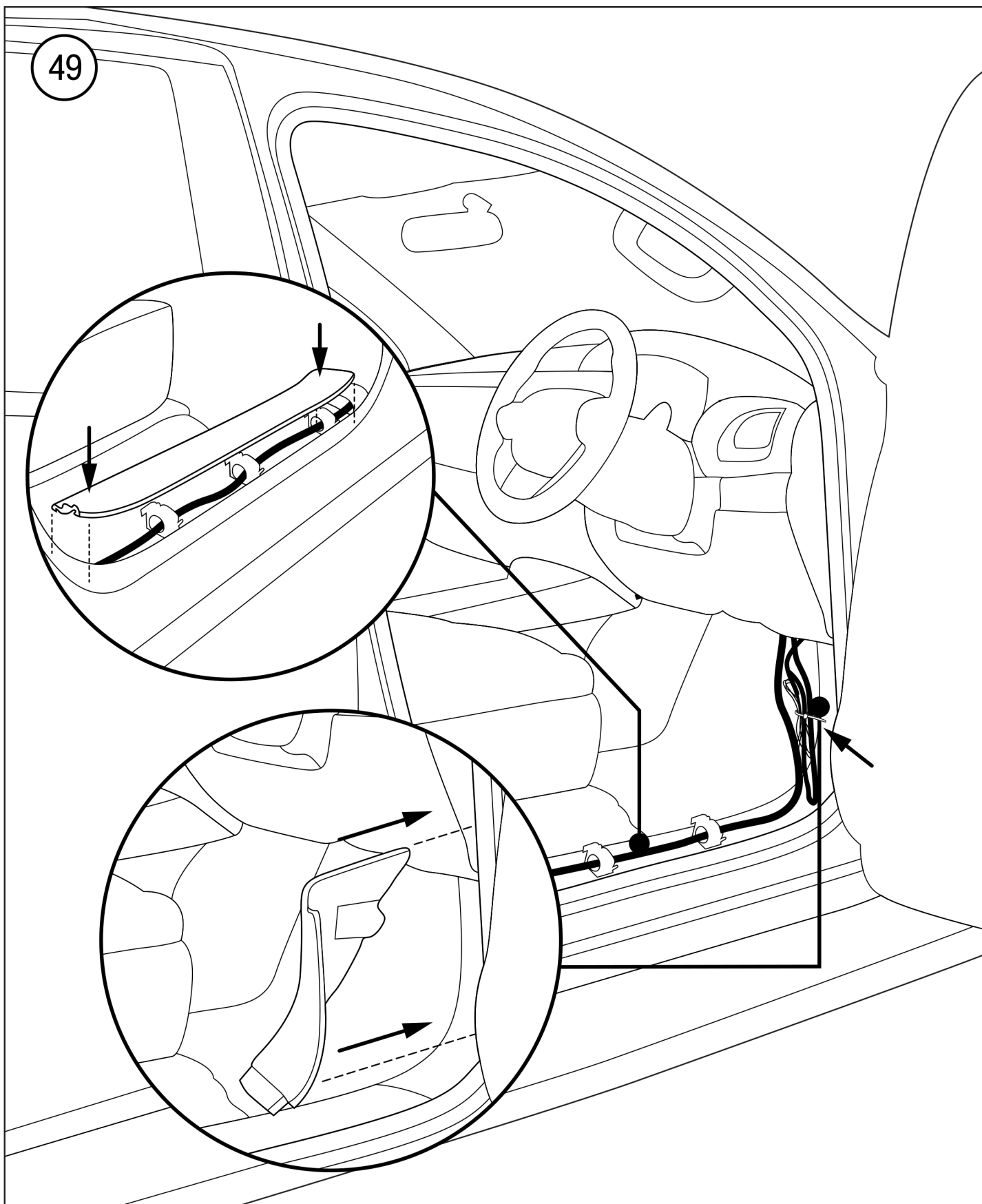
Take off the Rear Light by using wrench No.10



Take off the Rear Light vehicle.

Punch the hole at the liner around 16mm. in order to run the Harness Lamp Back Door through the vehicle tub channel out of the Rear Light socket .



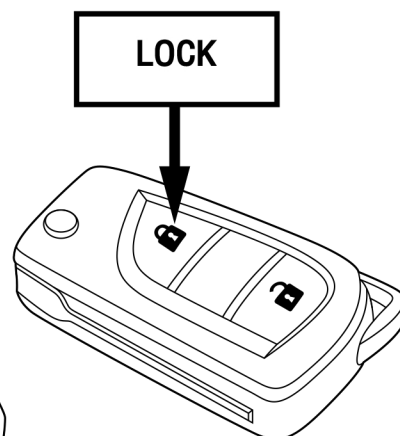
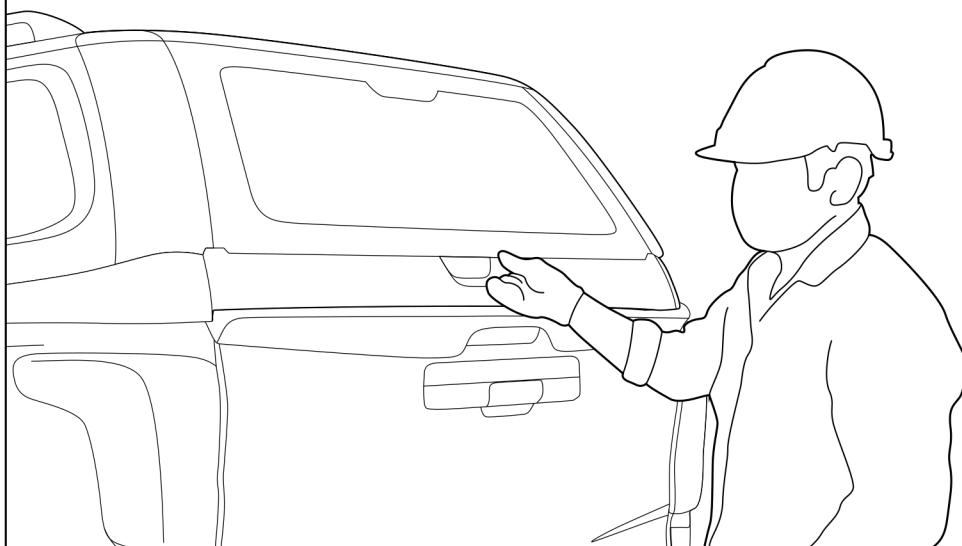


Tight up the wiring at the driver side by using the Cable Tie, then close the vehicle cover.



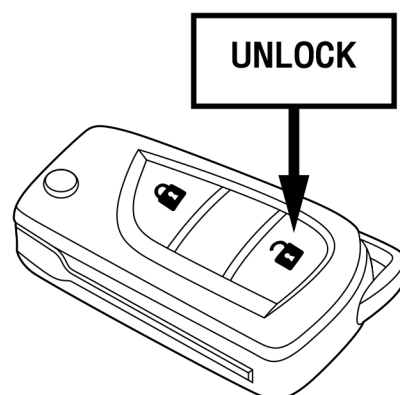
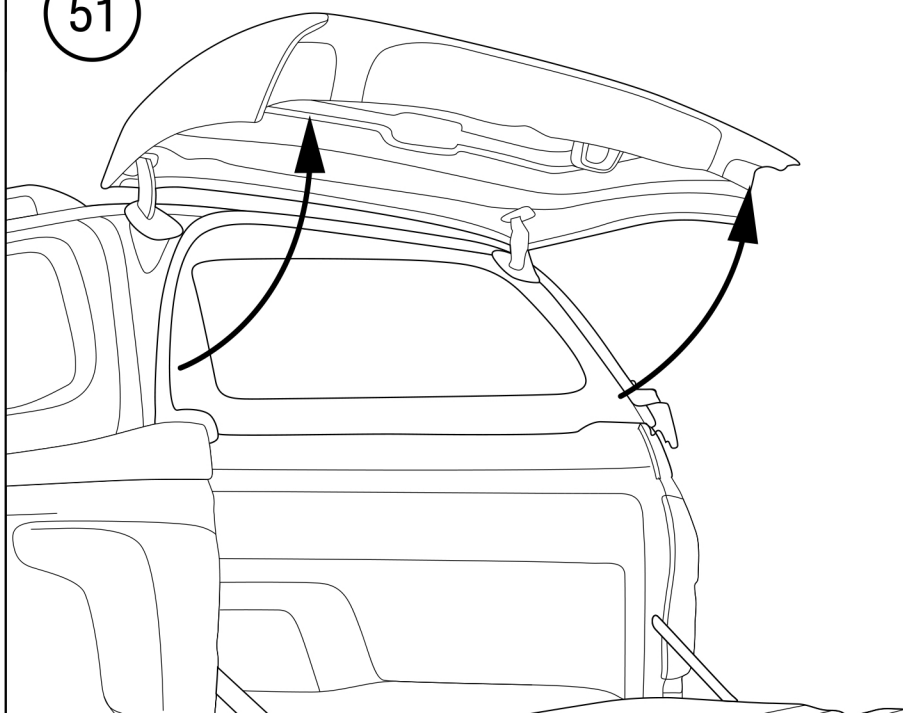
50

Check the Central Lock / Room Lamp working.



Central Lock checking by pressing the vehicle remote key at the Lock position, Canopy will be lock and cannot open.

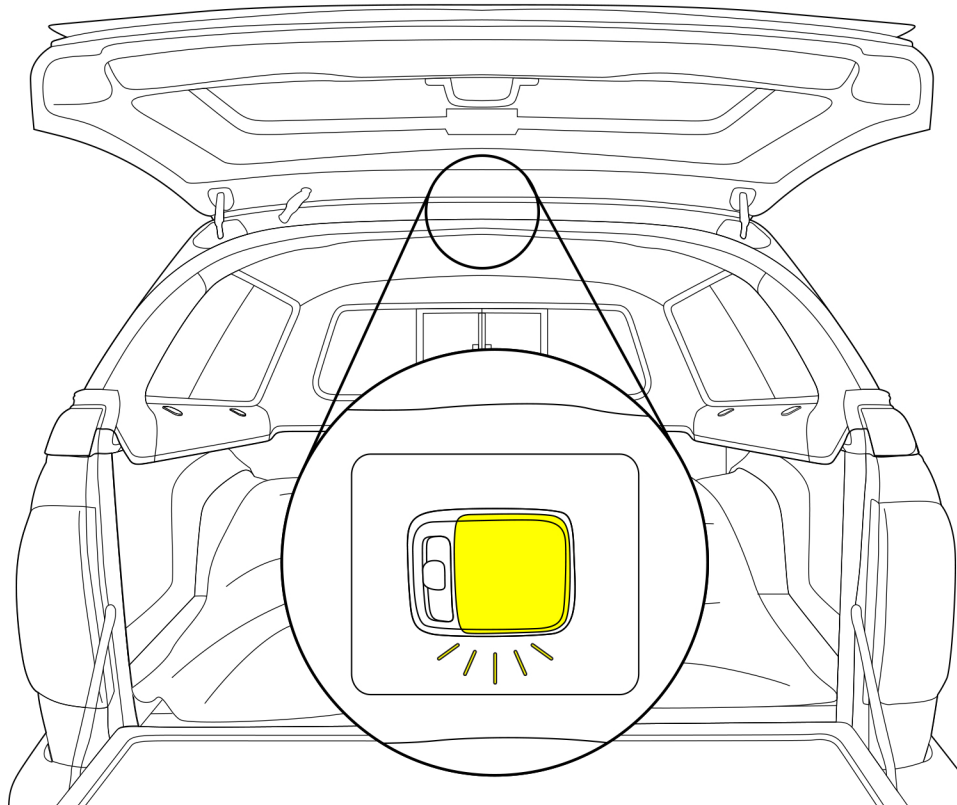
51



Central Lock checking by pressing the vehicle remote key at the Unlock position, Canopy will be open.

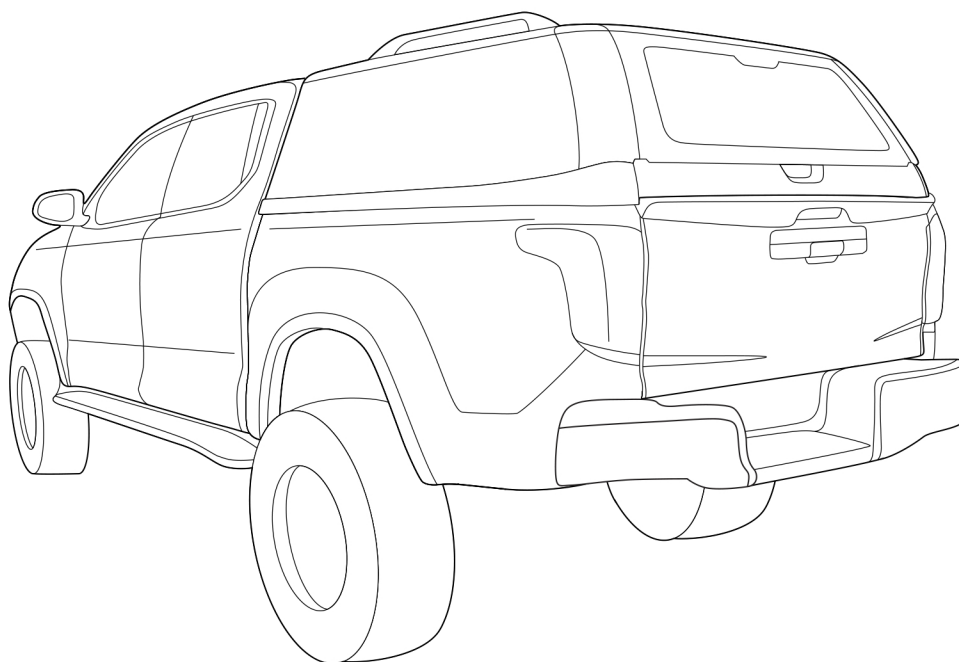


52



Room Lamp checking by opening the rear door then the Room Lamp will be on.

53



The process of canopy Electrical Installation is completed.