



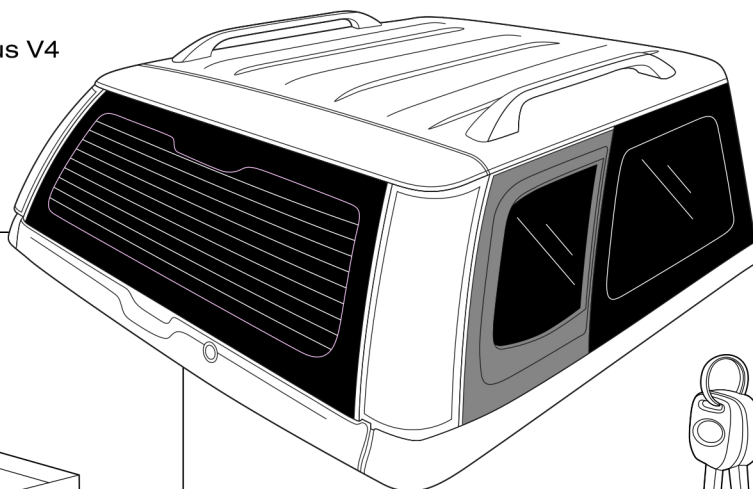
SAMMITR

Mechanical Installation Manual All Models

Steel Canopy : SUV-Plus V4 Version 1.0

Part In Main Carton

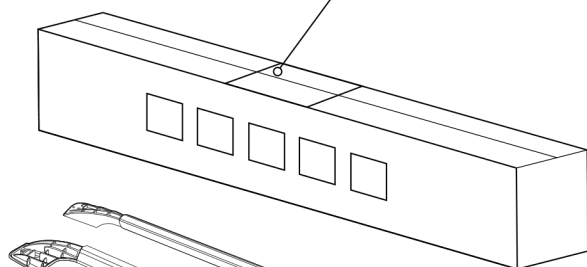
P1: Steel Canopy SUV-Plus V4



Kit Box

Part List Paper

P3: Key



K1 : Roofrack R/L

K3 : Switch Case

x4 (D-Cab)
x6 (C-Cab)

x8
K9 : Washer M6

x2
K2 : Rubber R/L

K4 : Wiring No.38

K5 : C-Clamp

K7 : Bolt M6

x8
K10 : Washer M8

K6 : Roofrack Cover

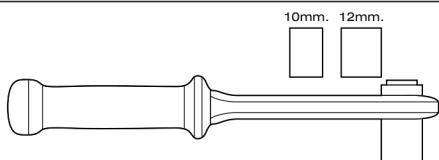
K8 : T Paint

x8
K11 : Spring
Washer M6

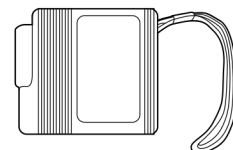
Require Tools



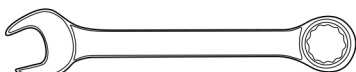
T1 : 13 mm. Wrench



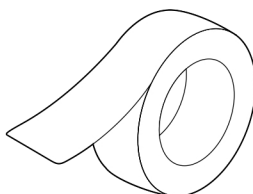
T3 : 10,12mm. Torque Wrench



T4 : Measuring Tape/Ruler



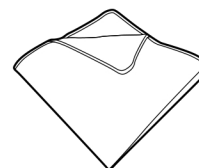
T2 : 10 mm. Wrench



T5 : Tape



T6 : Electric Tape

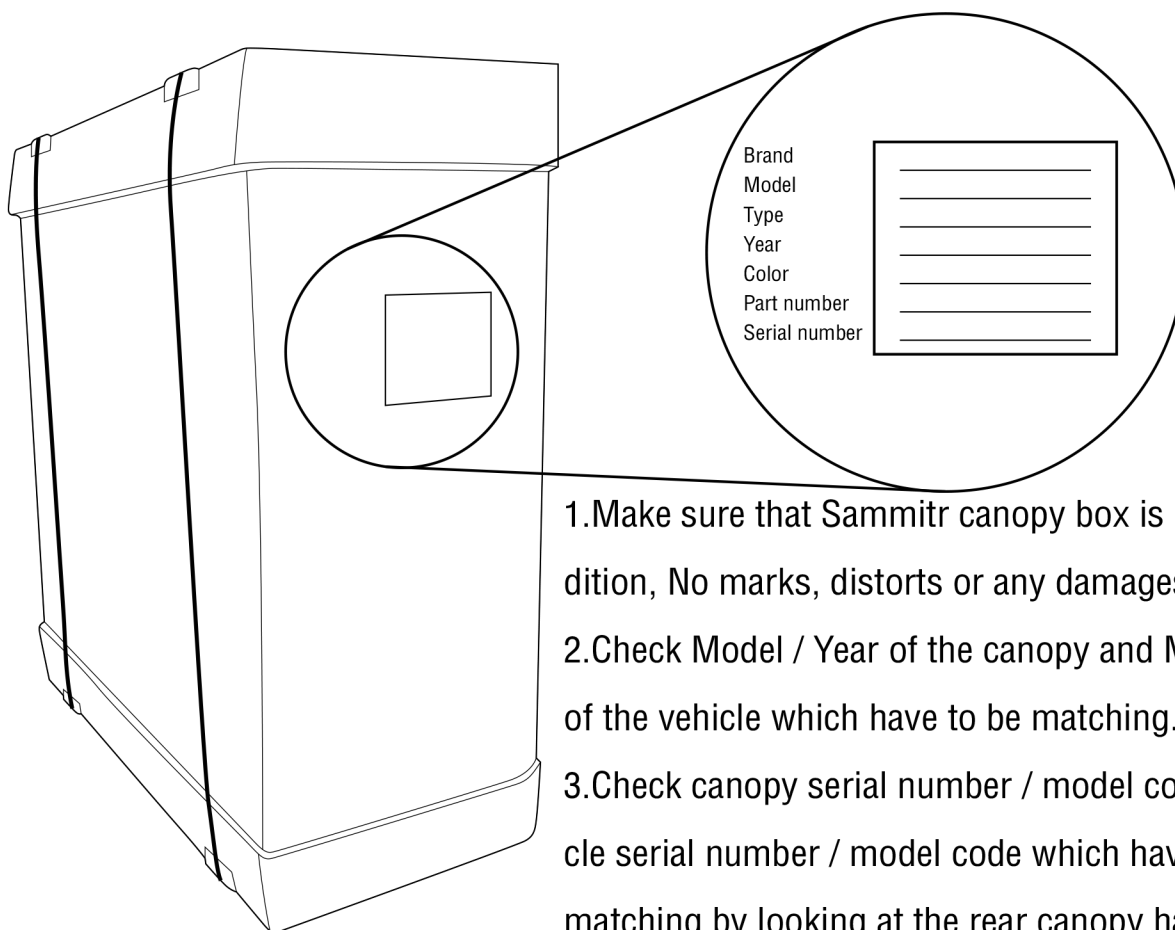


T7 : Fabric

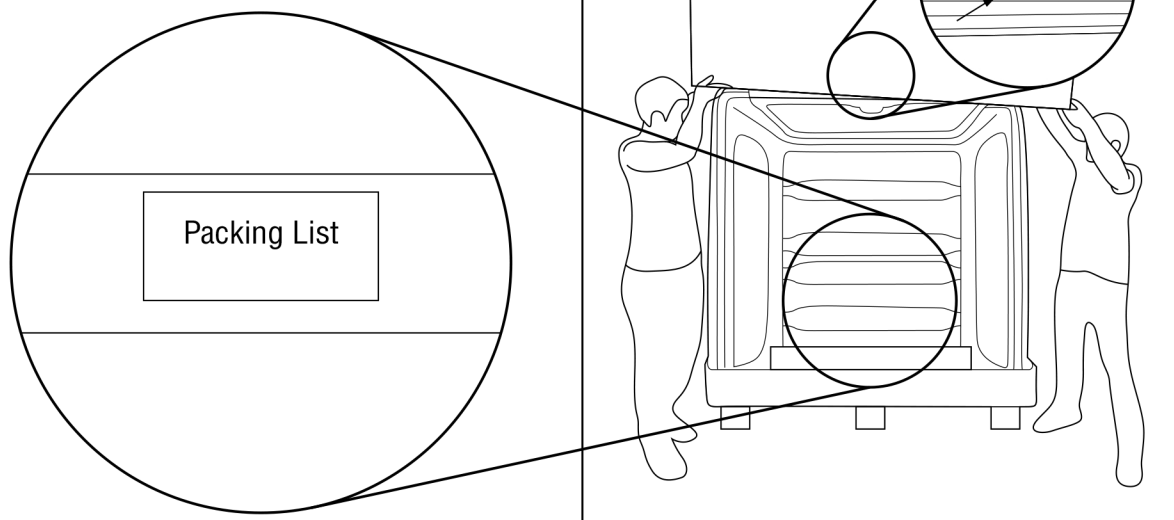


1

The Procedure of checking the Sammitr canopy box before installation.



4. Check all the accessories received inside the box with the Packing List.

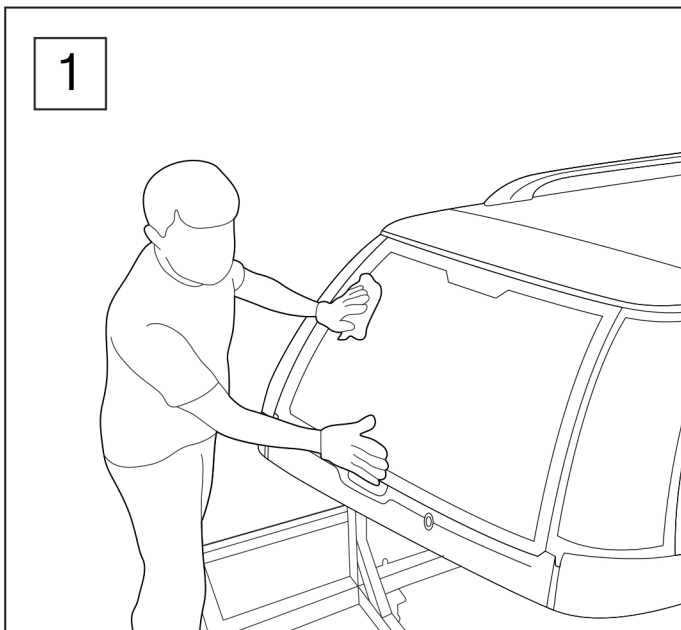




2

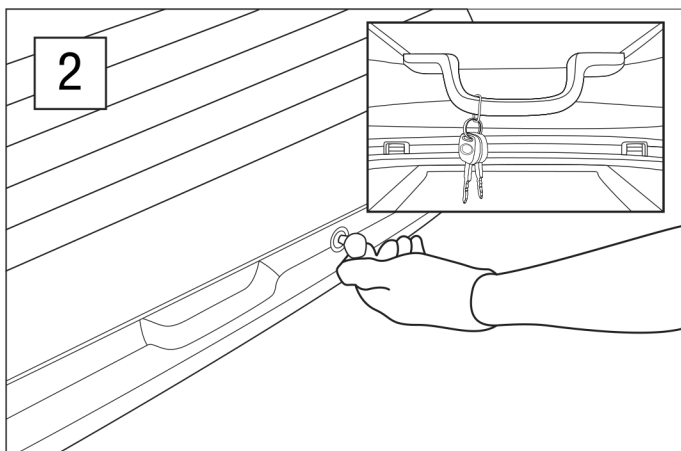
The preparation process of Sammitr Canopy SUV-Plus V4 model before installation with the vehicle.

1

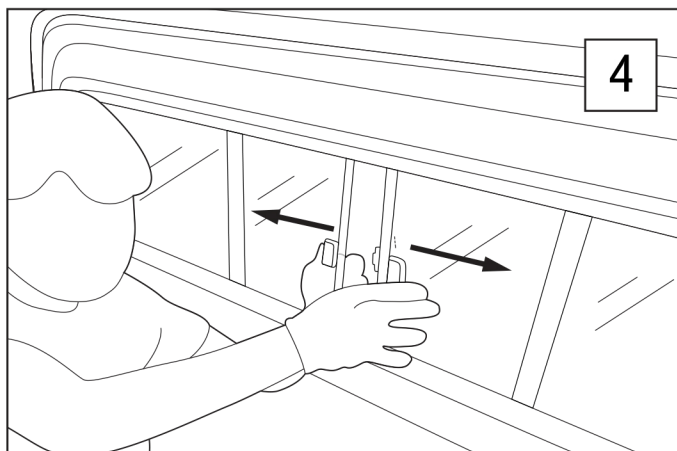


1. Canopy have to be in good condition, no damage, dent, cracks, smooth surface including no window damages or cracks.
2. Locking system is working for both keys.
3. Canopy sides are not damage, dent or cracks.
4. Canopy front window panel is working (open/close), no cracks or damages occurrences.
5. Check the Rear Door by open and close.

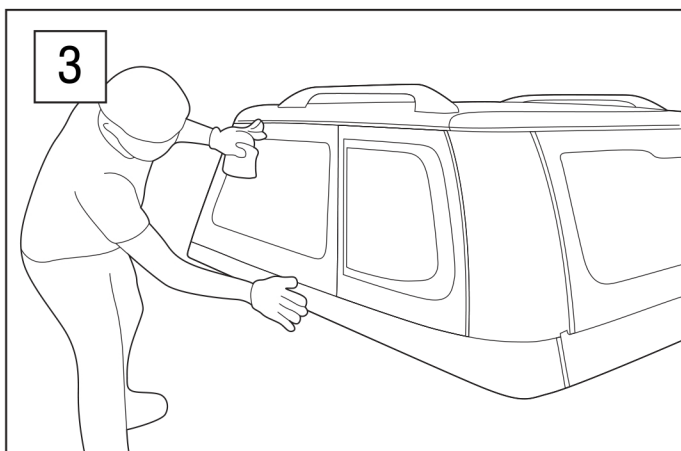
2



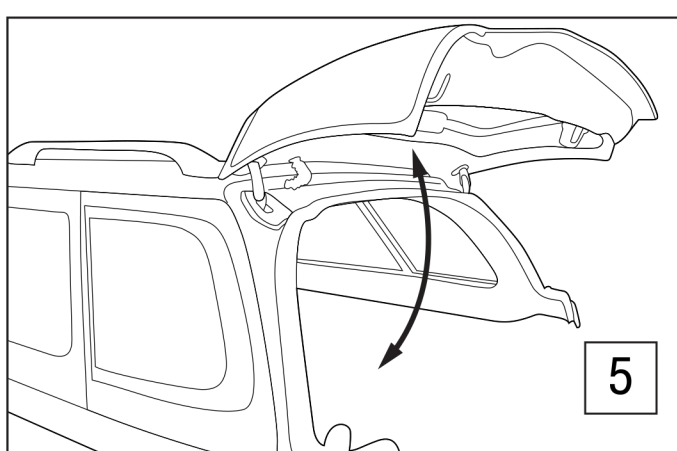
4



3



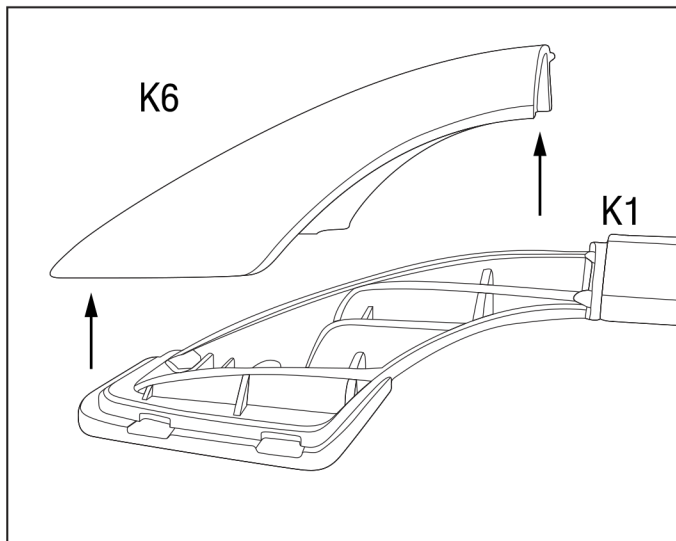
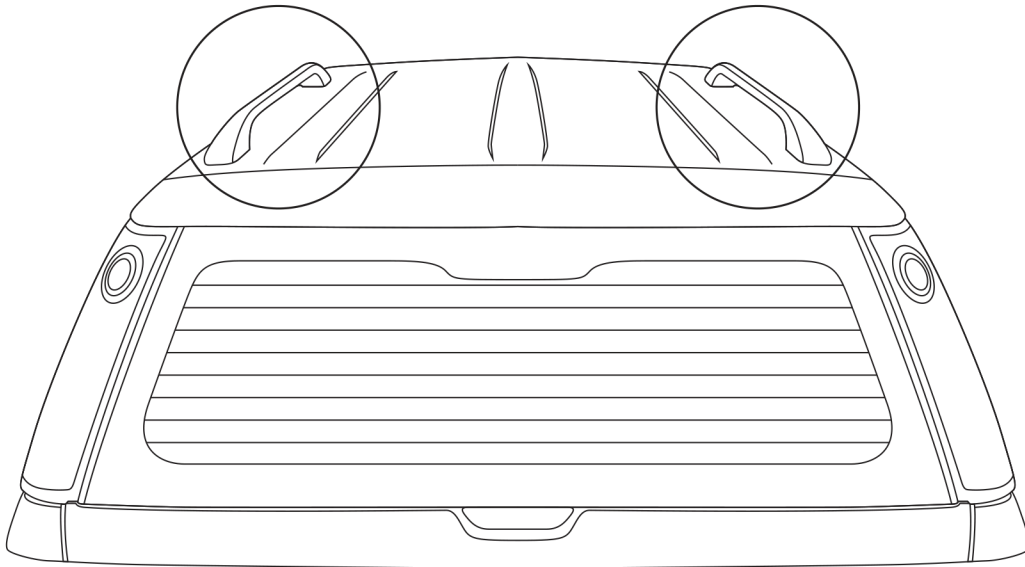
5



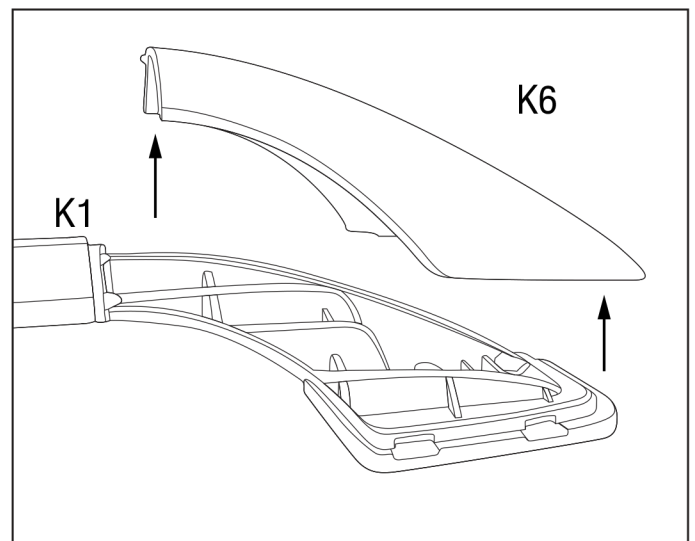


3

The process of Roof rack installation manual of the SUV-Plus V4 canopy before installs on the vehicle.



Roof rack Front Part – Rear Left

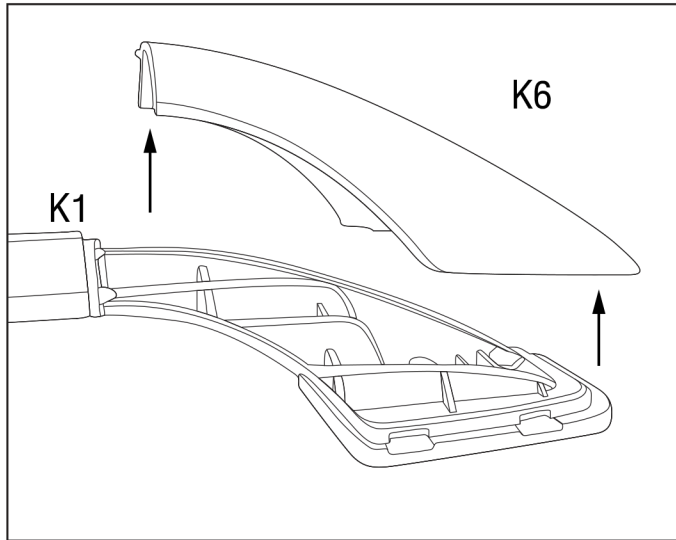


The process of remove the roof rack cover on the SUV-Plus V4 canopy in order to install nuts.

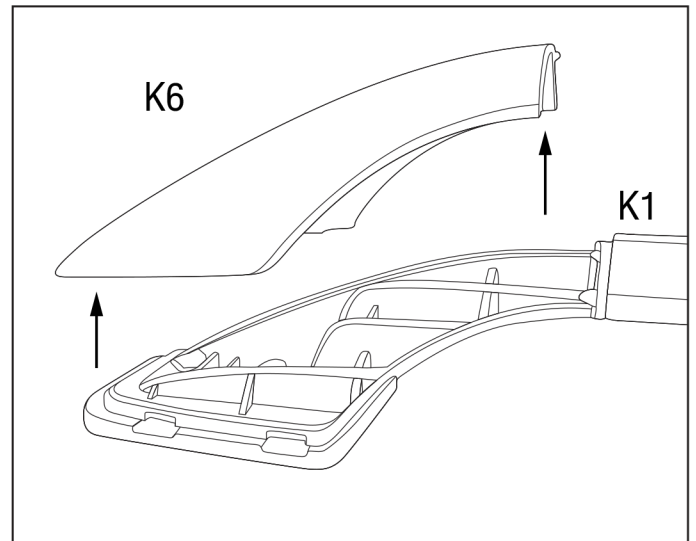


4

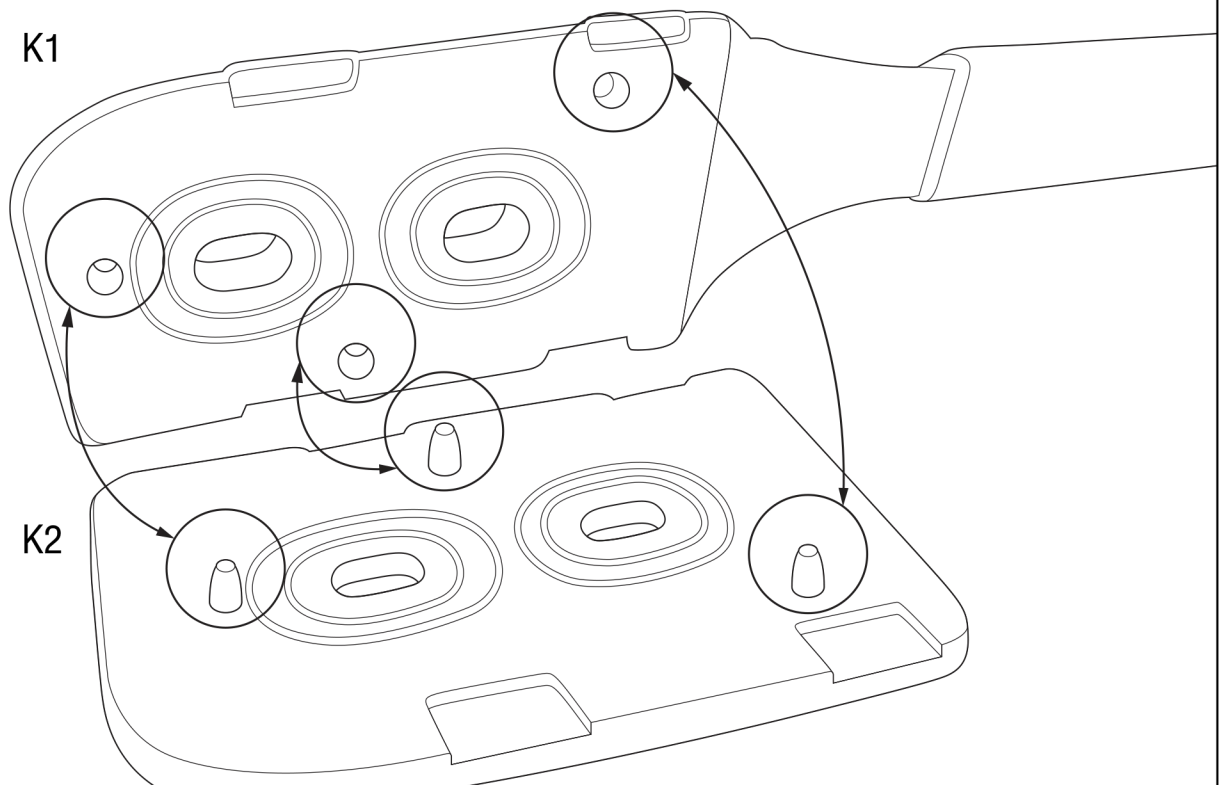
Roof rack Front part – Rear Right.



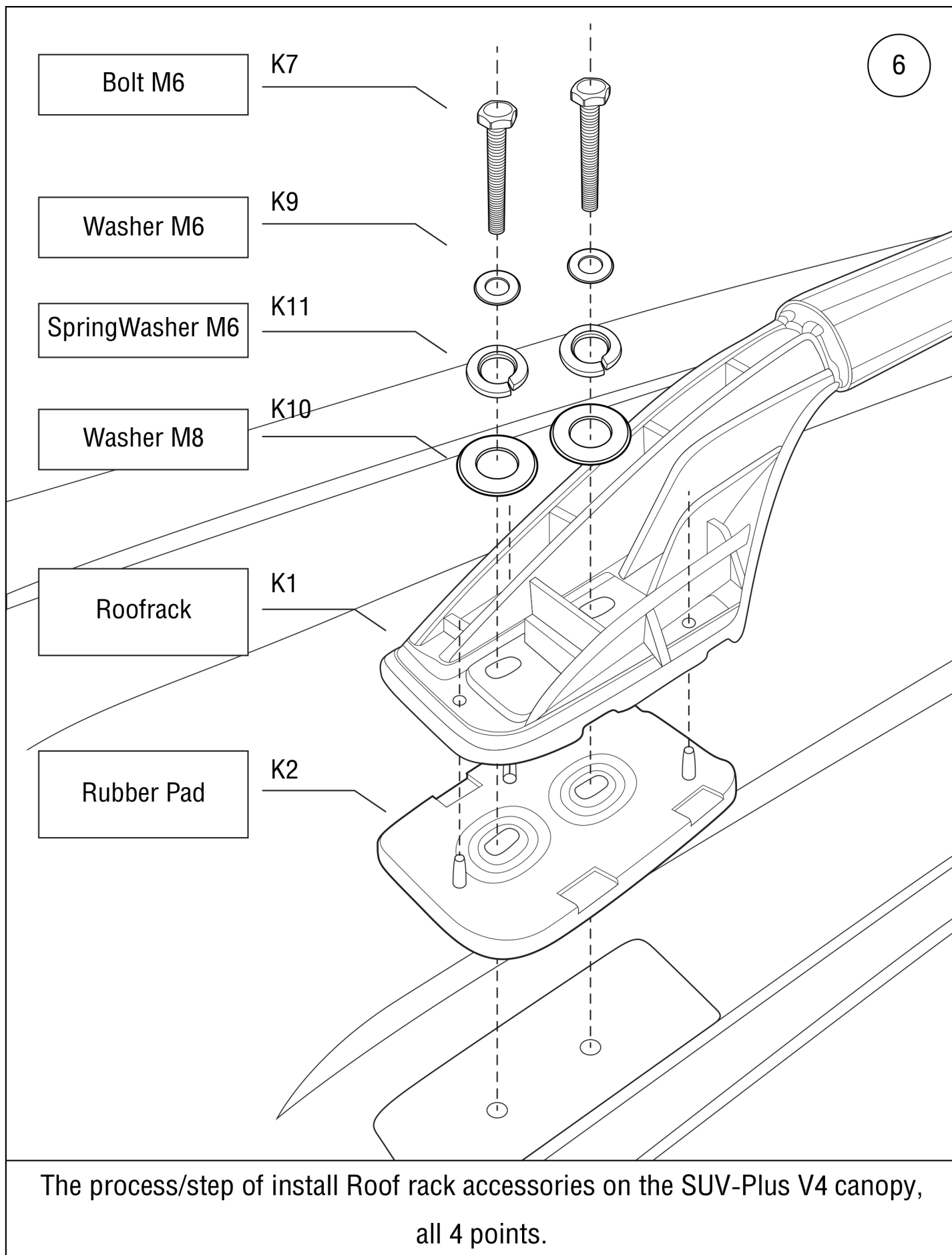
The process of remove the roof rack cover on the SUV-Plus V4 canopy in order to install nuts.

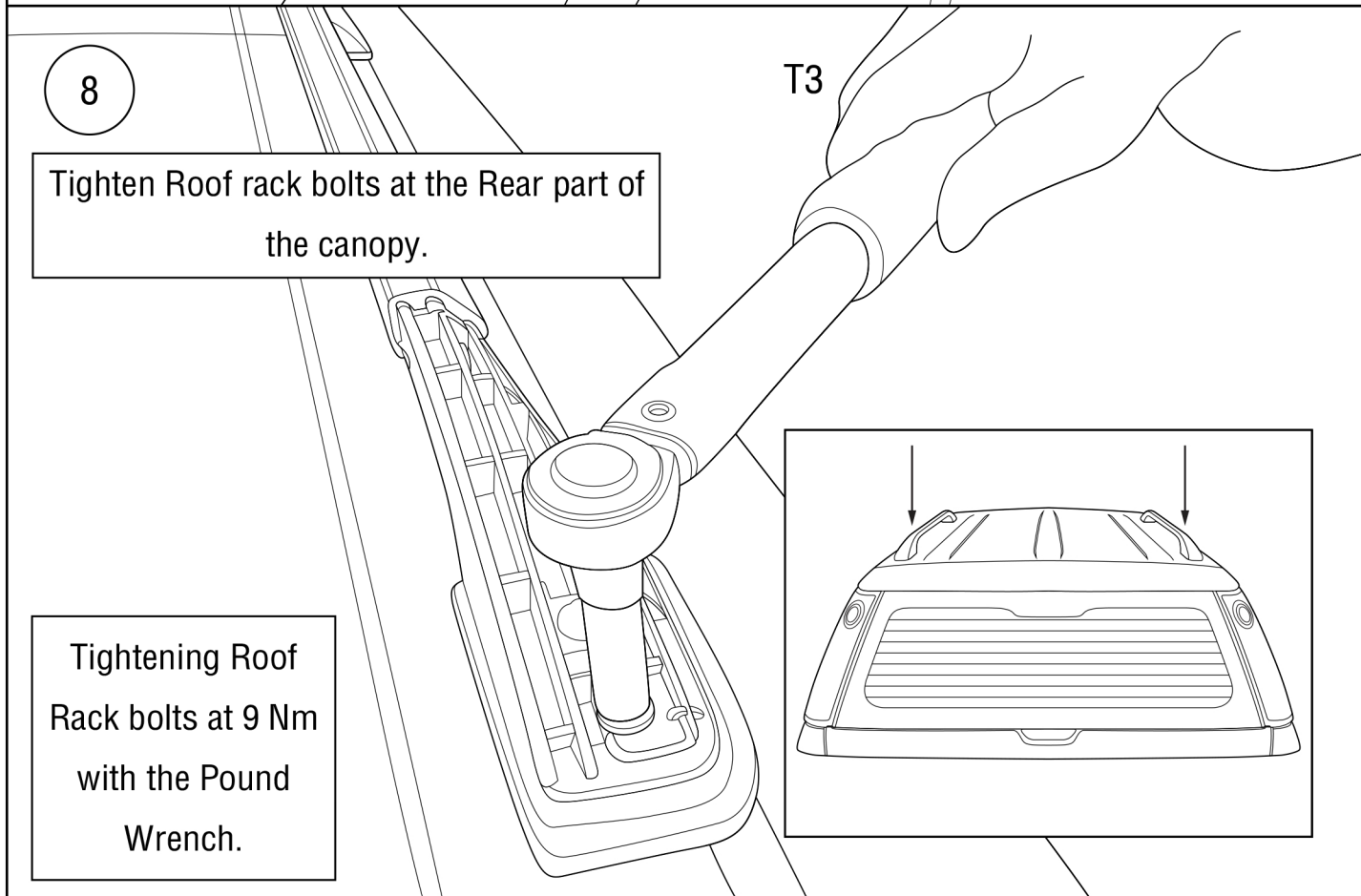
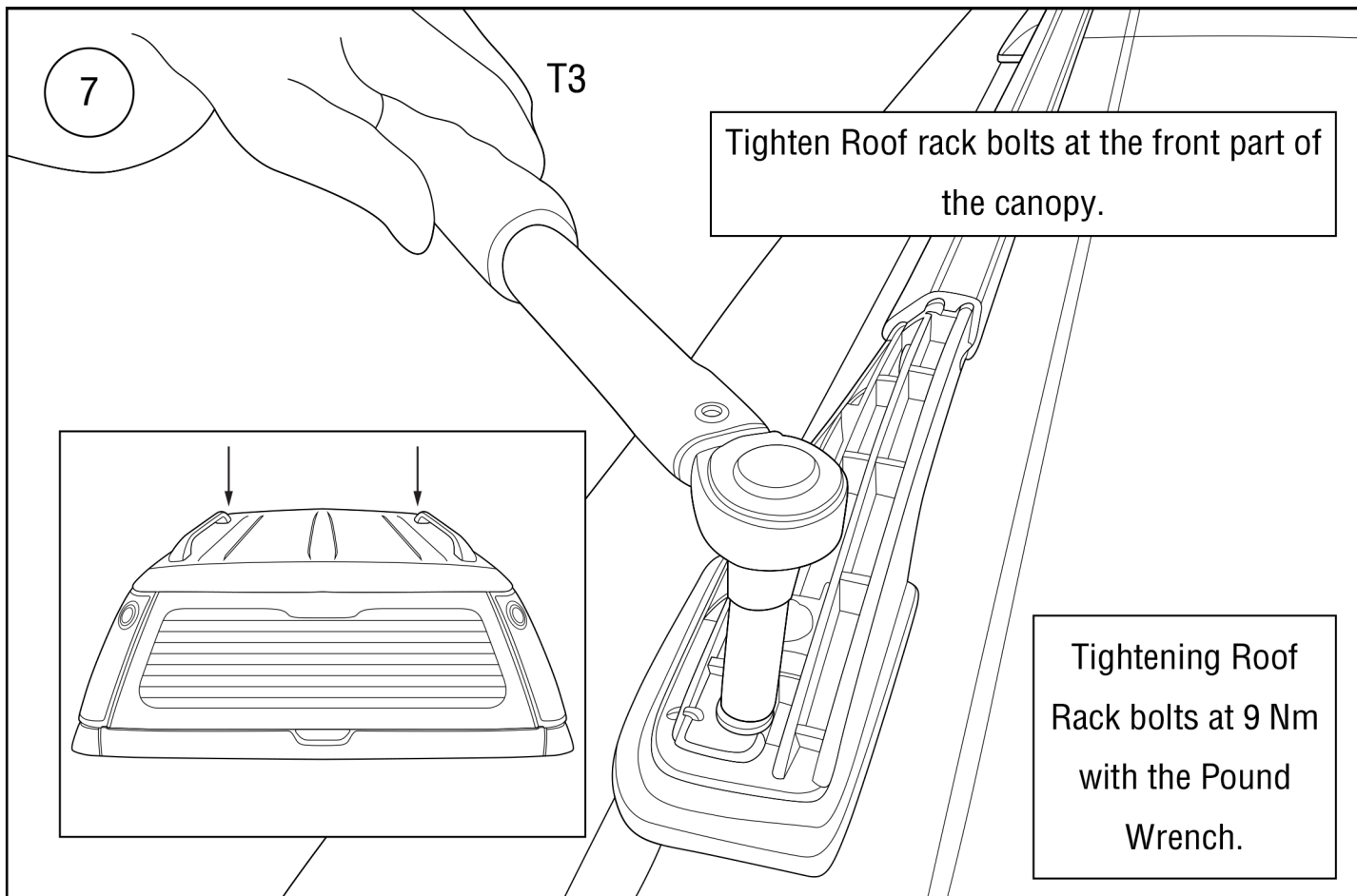


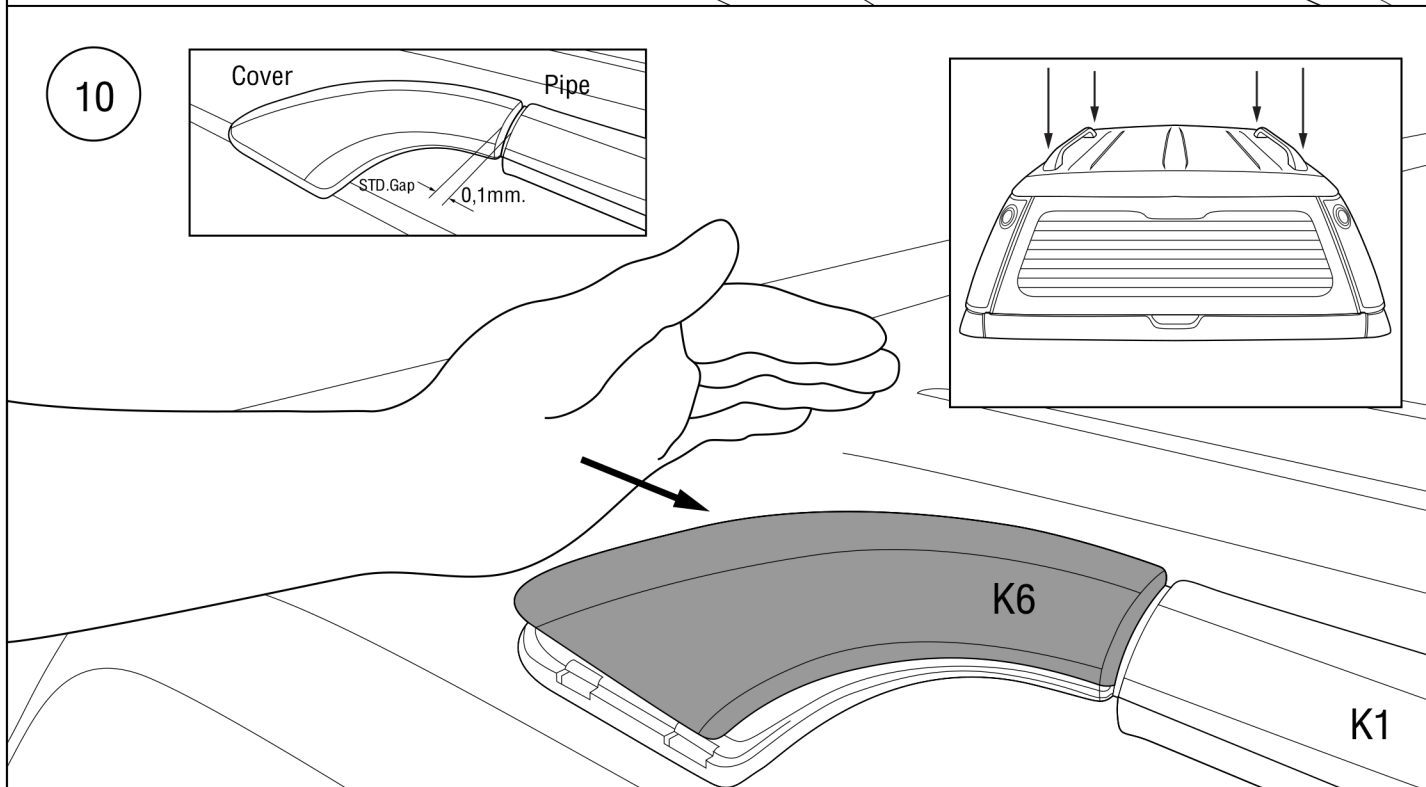
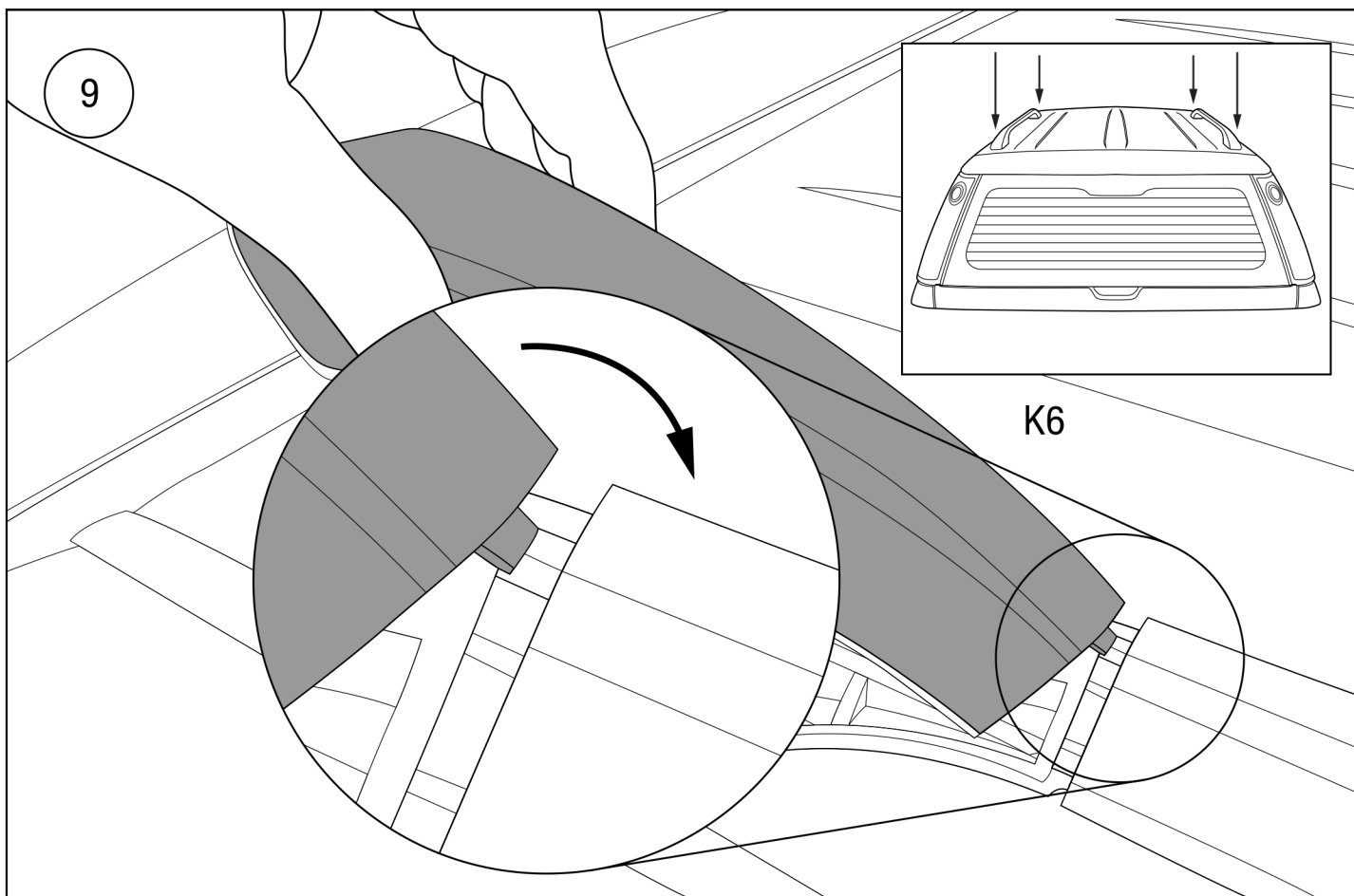
5



Rubber Pad dispatch position of the Roof rack legs when install on the canopy.



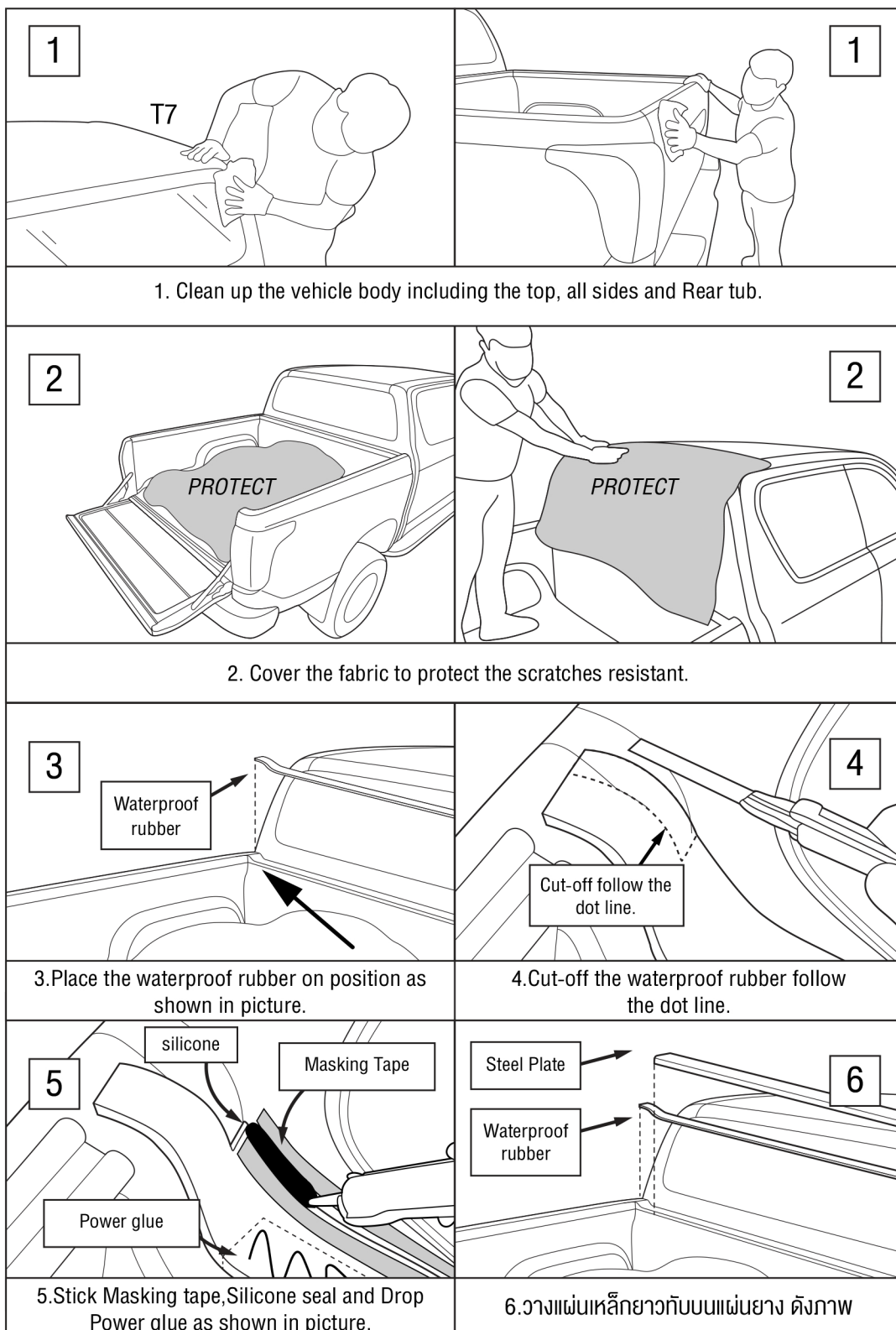




Press and push the Roof rack cover back to the position by hand, then check the gap between cover and roof rack (pipe).

11

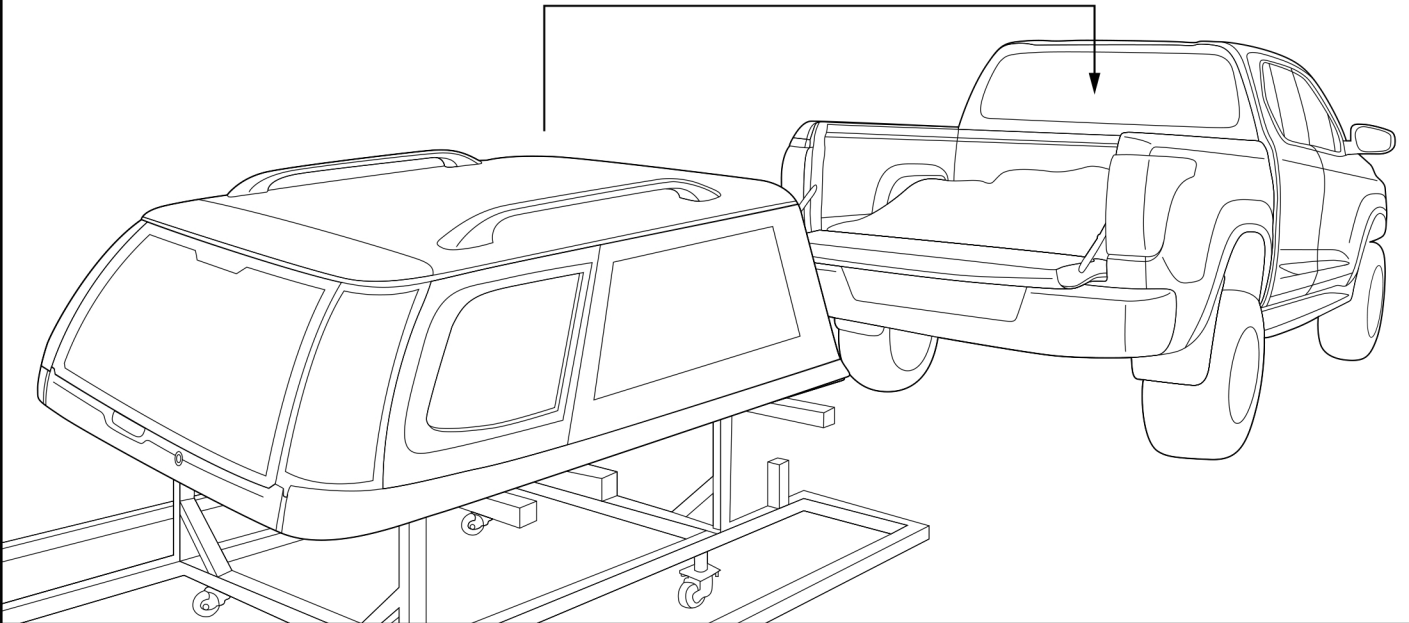
The process of checking and preparing the Mitsubishi Triton vehicle before install the canopy.



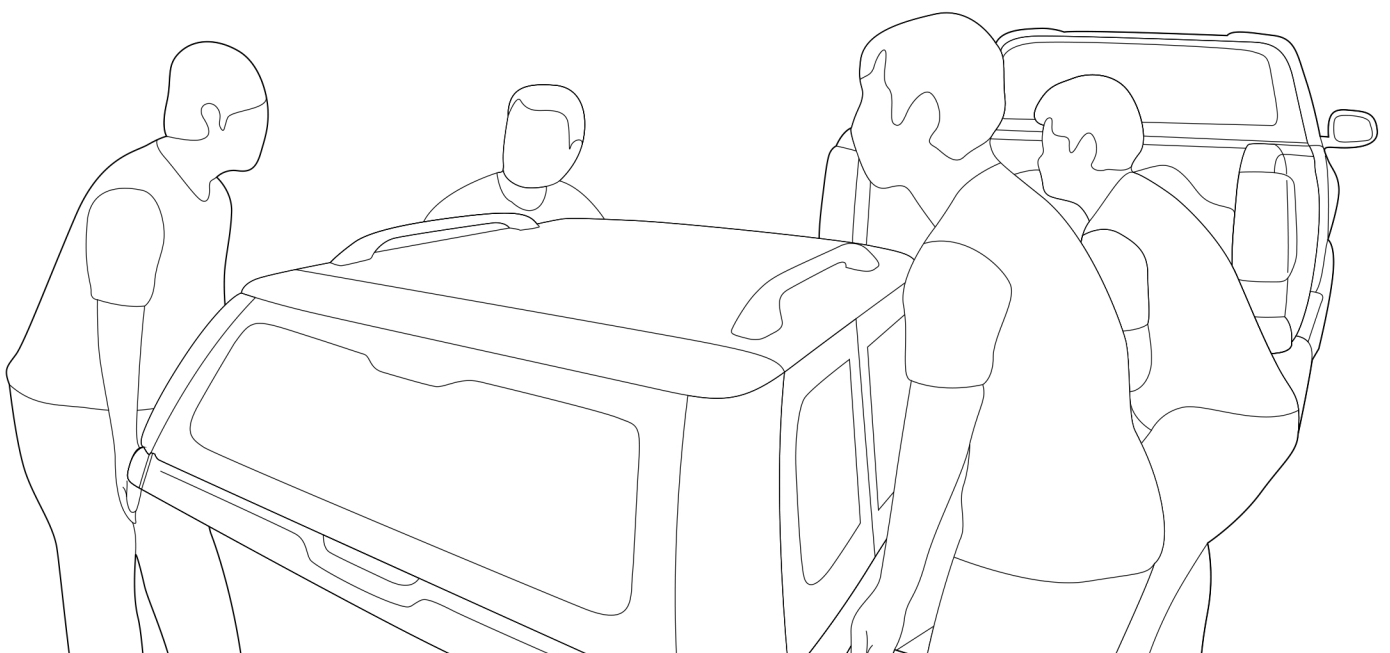


12

The process of preparing Sammitr Canopy SUV-Plus V4 model before install on the vehicle.



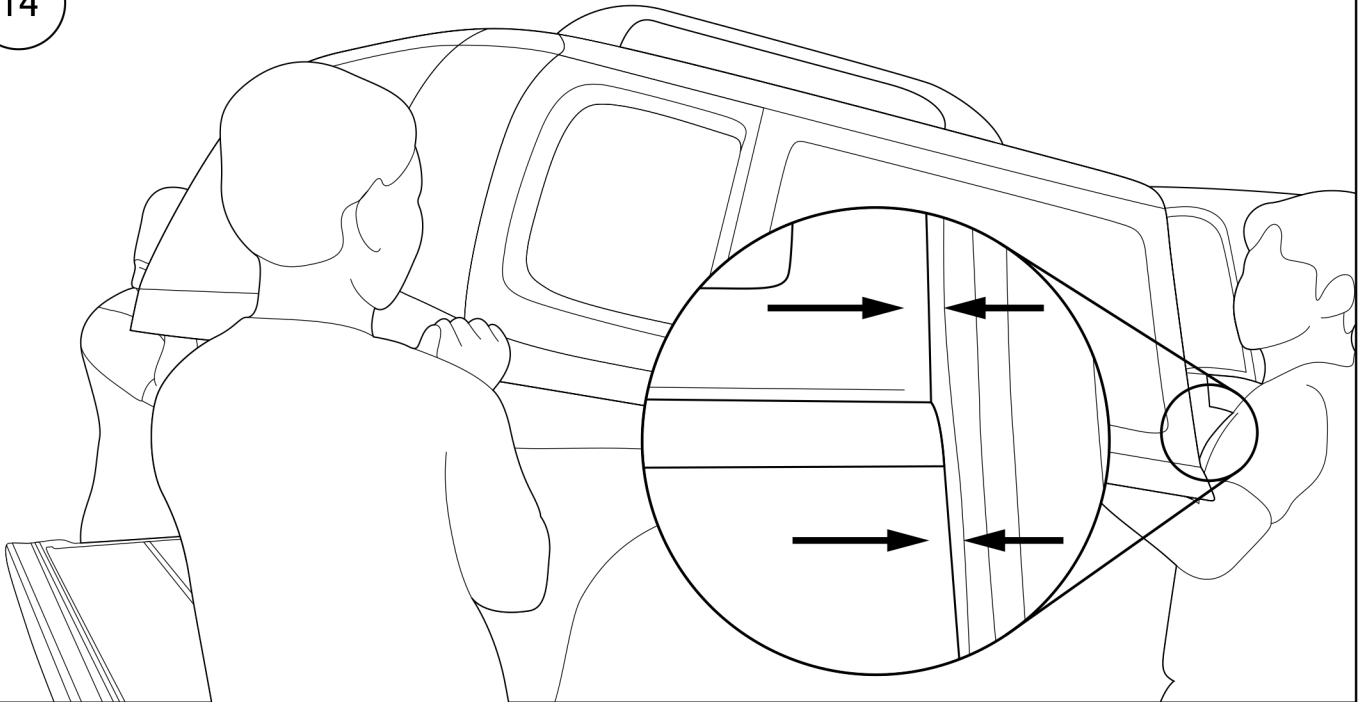
13



The process of lifting the canopy onto the vehicle tub by using 4 people for lifting.

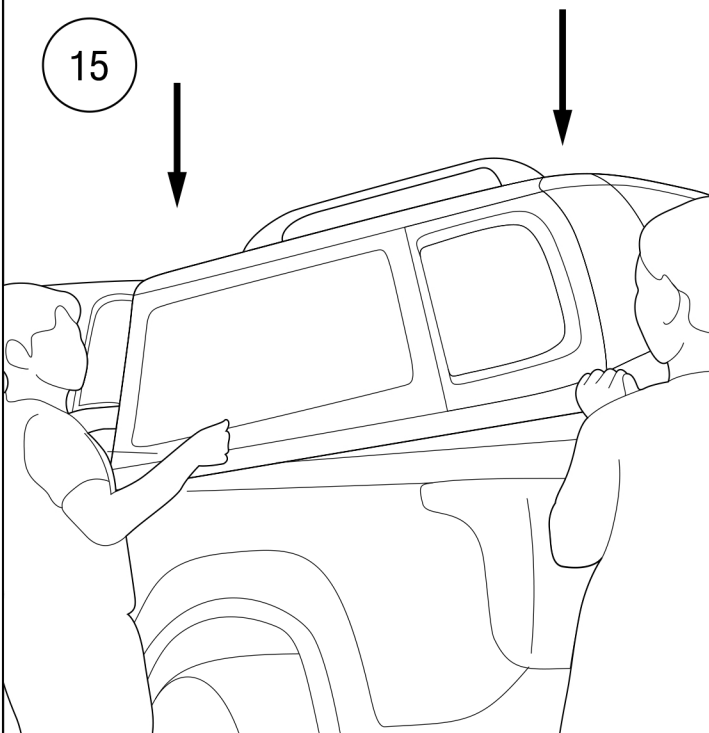


14



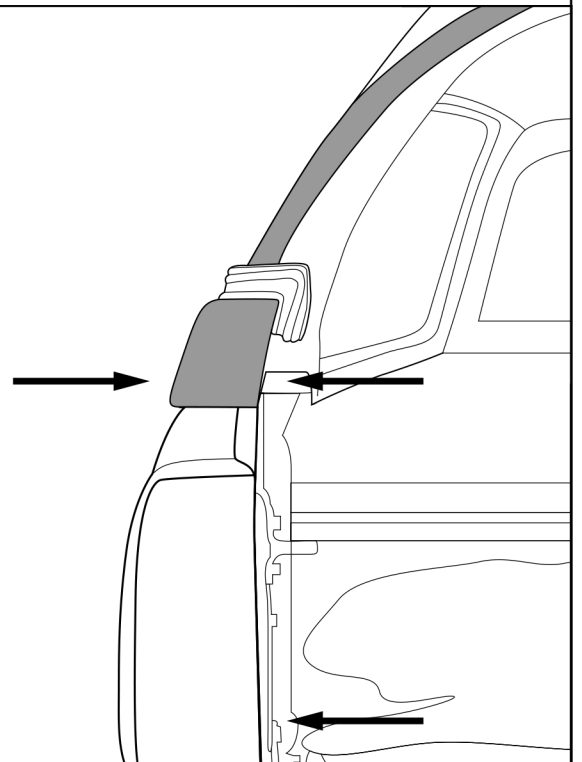
Lift canopy over the pick up truck by rising the rear part higher and the front part to be in the parallel with the edge of the vehicle tub.

15

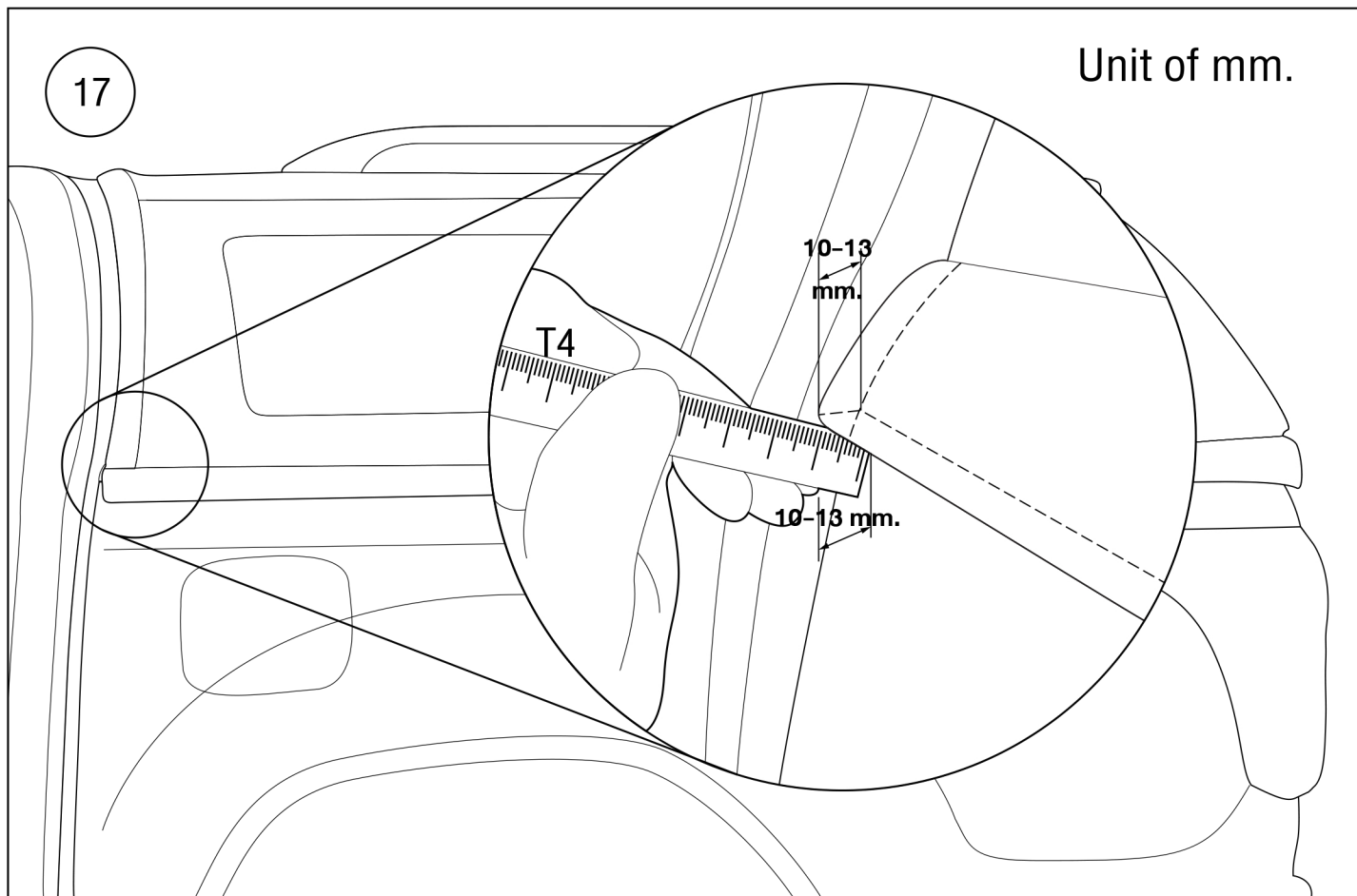


After get the distance in front part and then put the rear part to cover the vehicle tub.

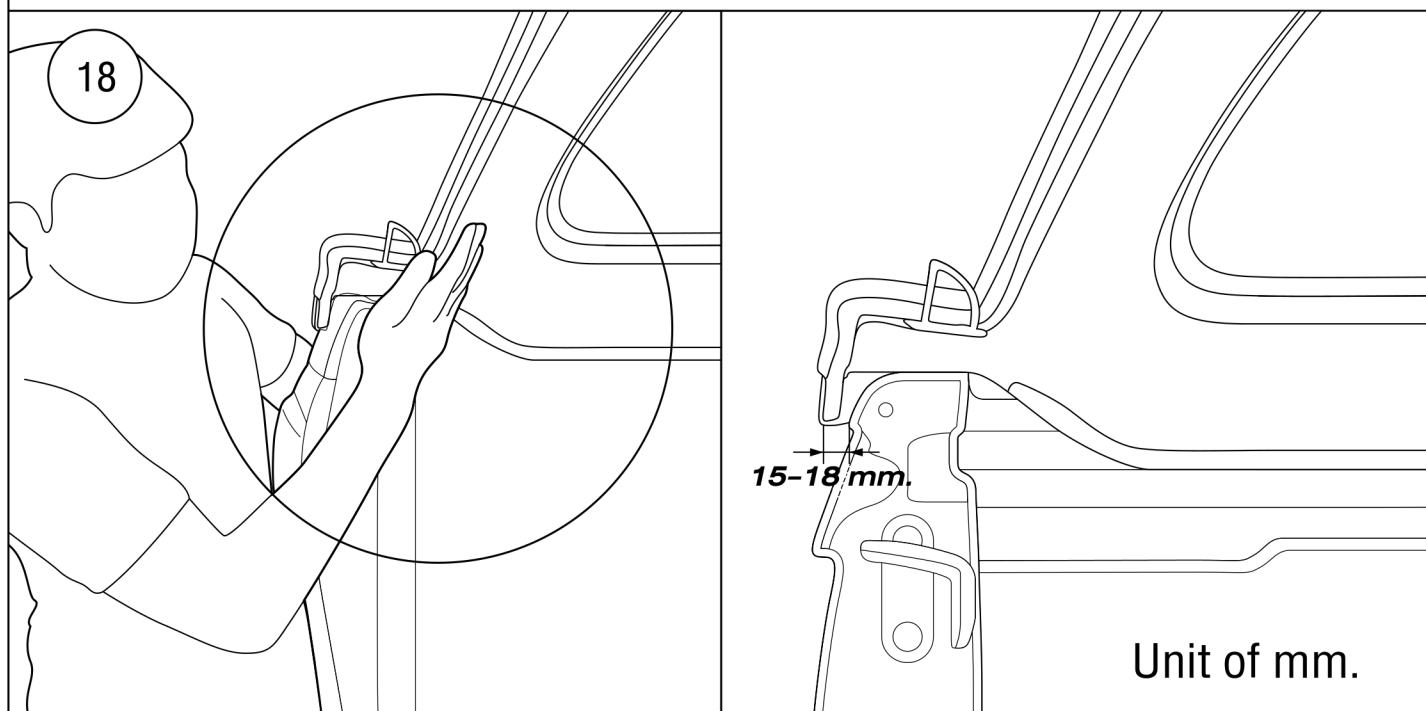
16



Make sure the distance between canopy edge and vehicle rear tub are equivalent both left and right sides.



Measure the distance between canopy coverrail and the vehicle, to have the 10-13 mm distance in overall.

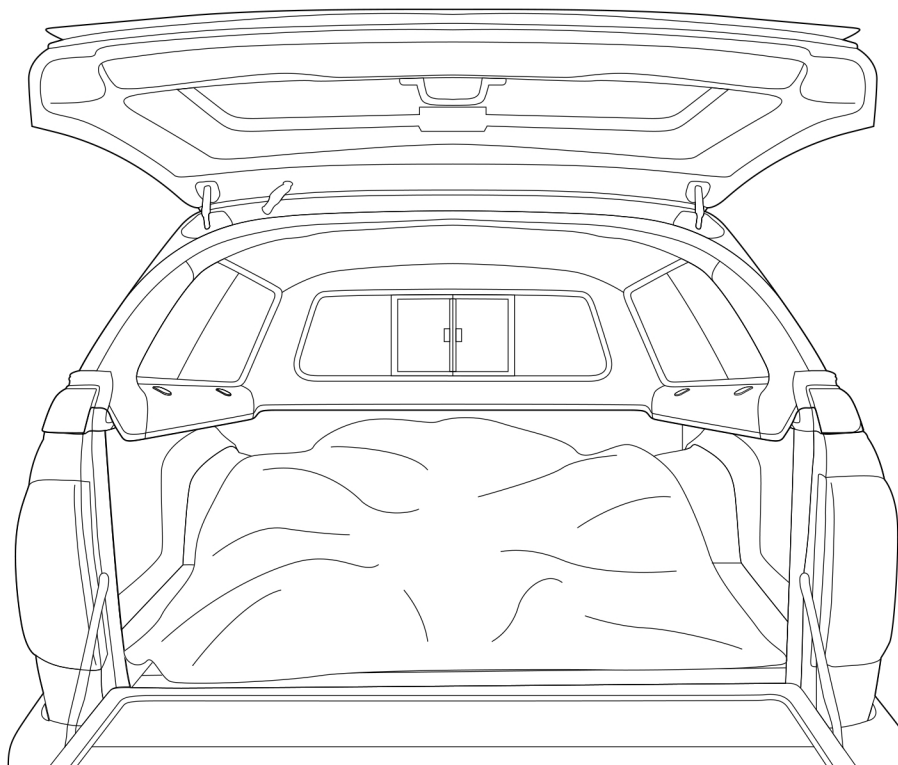


After finished measure the front part, check the distance at rear part of canopy which must have the distance of 15-18 mm.



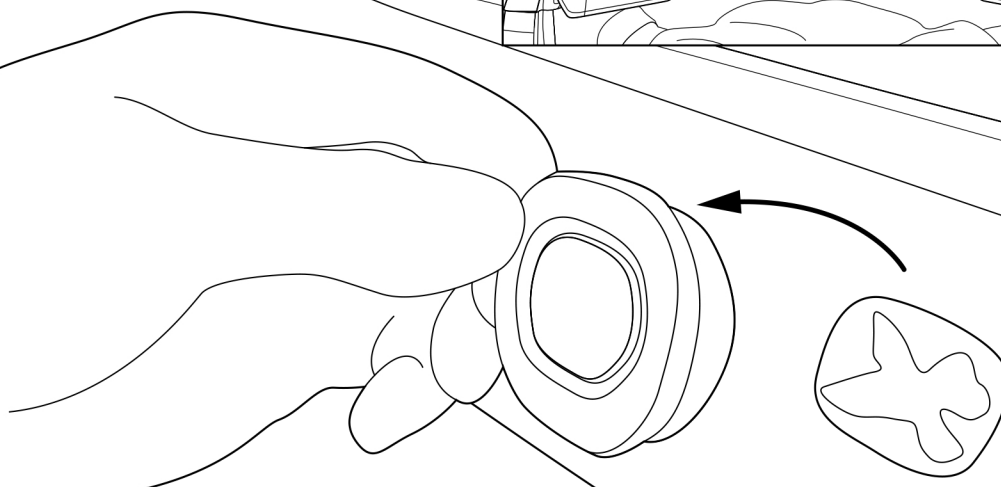
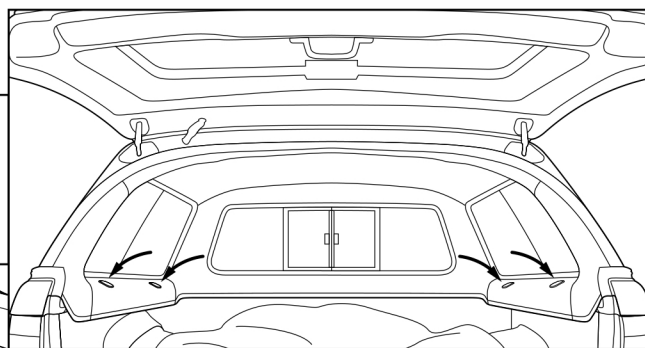
19

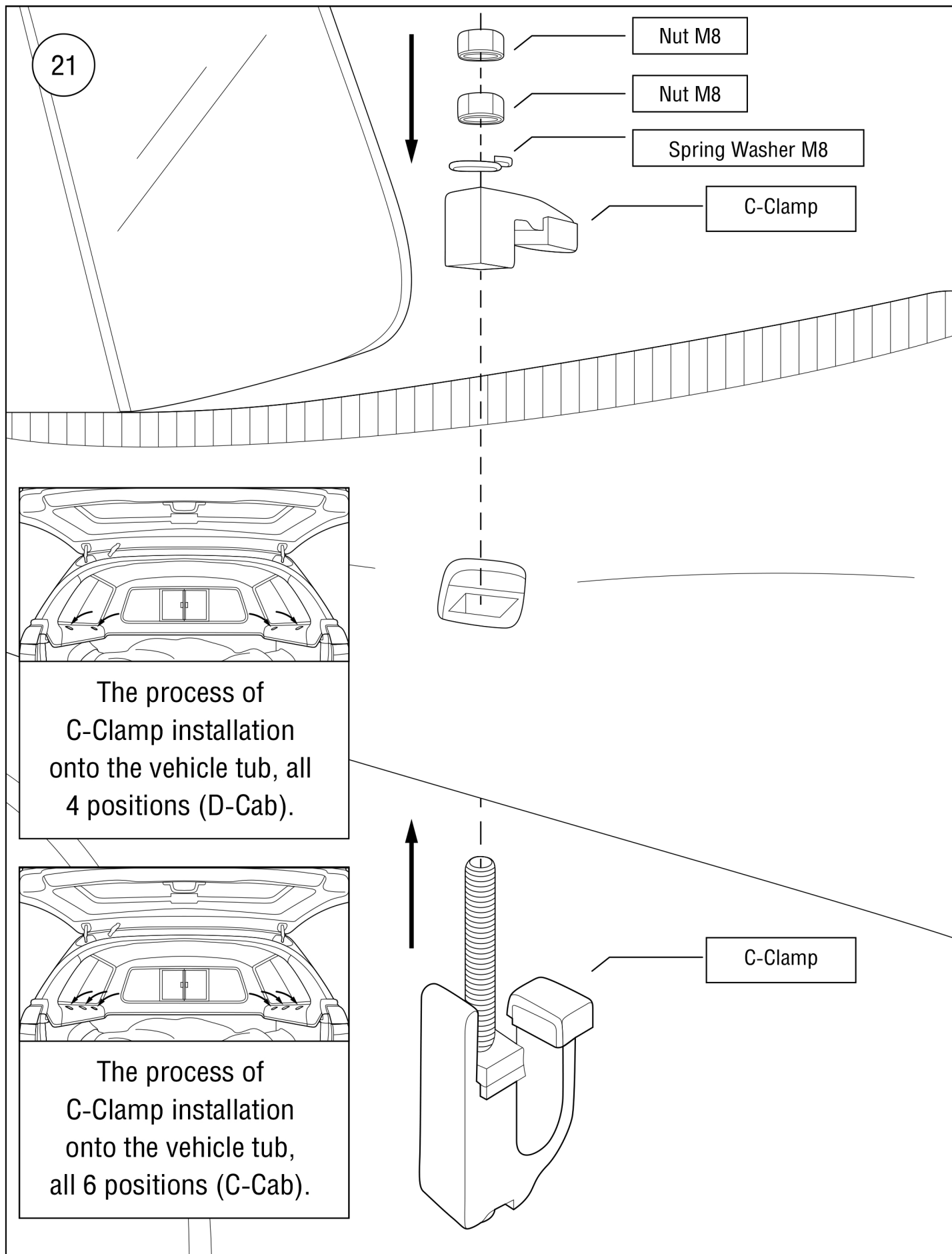
The process of C-Clamp installation SUV-Plus V4 canopy model with the vehicle.



20

Open / take off the rubber plug.

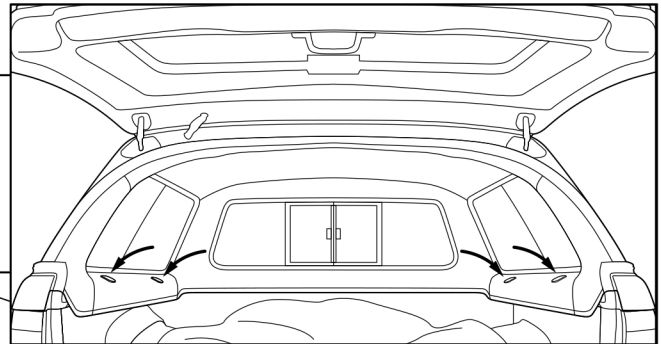






22.1

Tighten bolts of c-clamp by using pound wrench, with the pressure of 16 Nm.

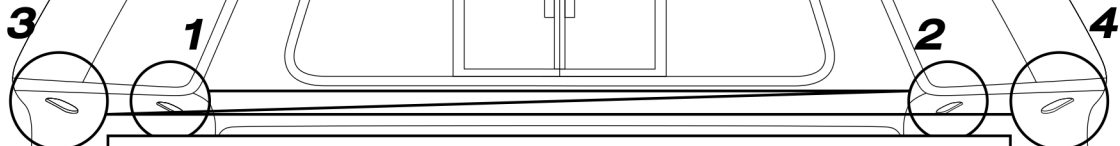


T3

D-Cab

Tighten canopy C-Clamp bolts with vehicle all 4 positons.

22.2



Caution : Before tighten bolts position 3 and 4 please make sure that the distance between the rear left and right pole of the canopy is equal.

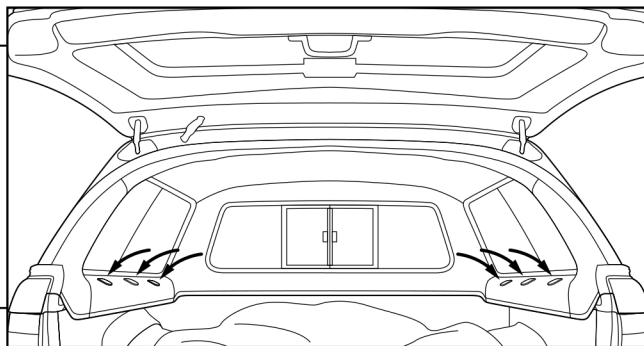
D-Cab

Steps of canopy C-Clamp bolts tightening onto vehicle.



23.1

Tighten bolts of c-clamp by using pound wrench, with the pressure of 16 Nm.

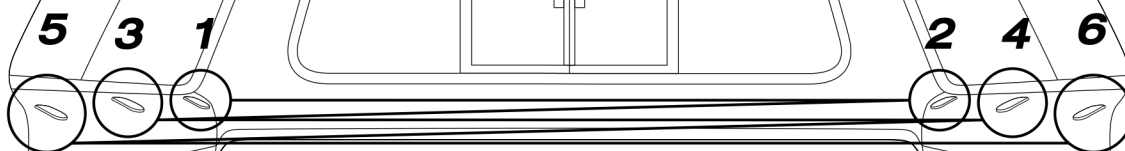


T3

C-Cab

Tighten canopy C-Clamp bolts with vehicle all 6 positons.

23.2



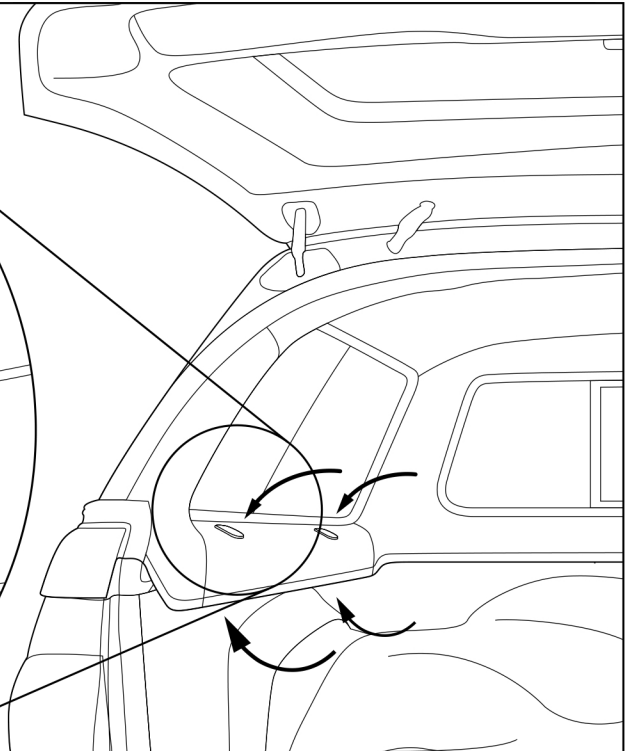
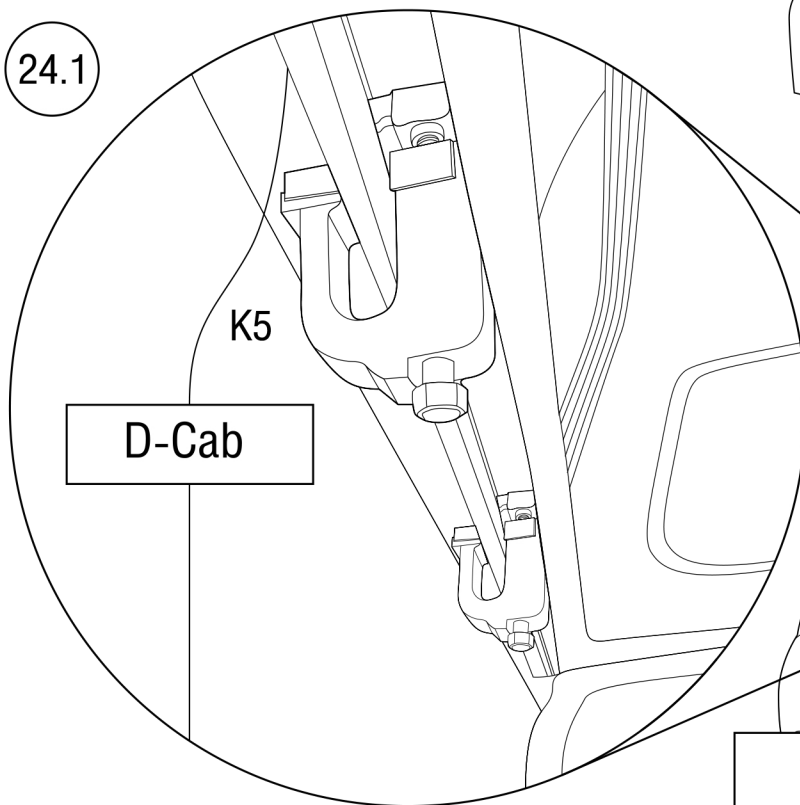
Caution : Before tighten bolts position 5 and 6 please make sure that the distance between the rear left and right pole of the canopy is equal.

C-Cab

Steps of canopy C-Clamp bolts tightening onto vehicle.

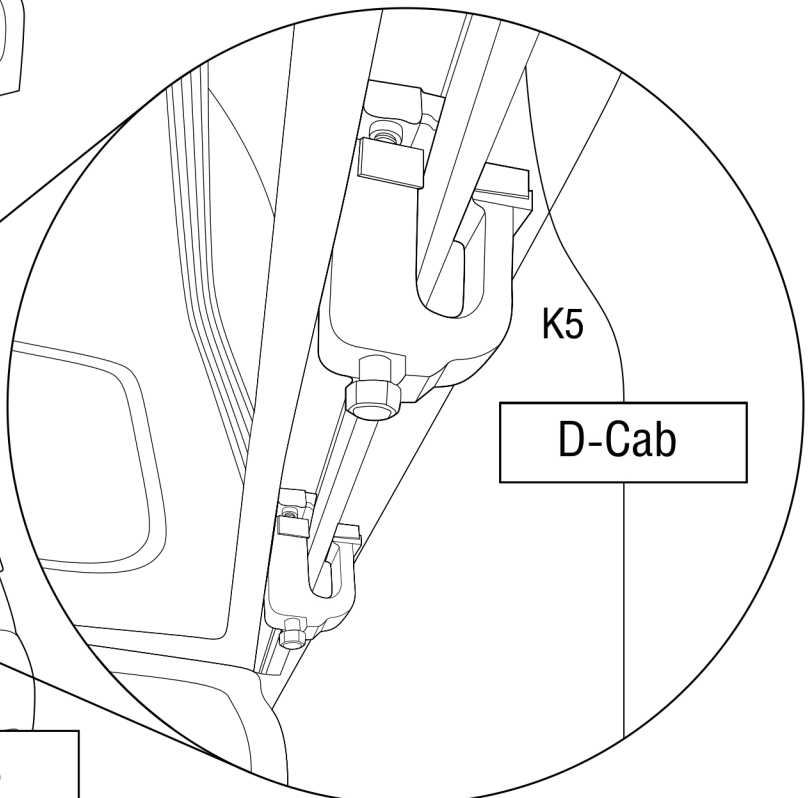
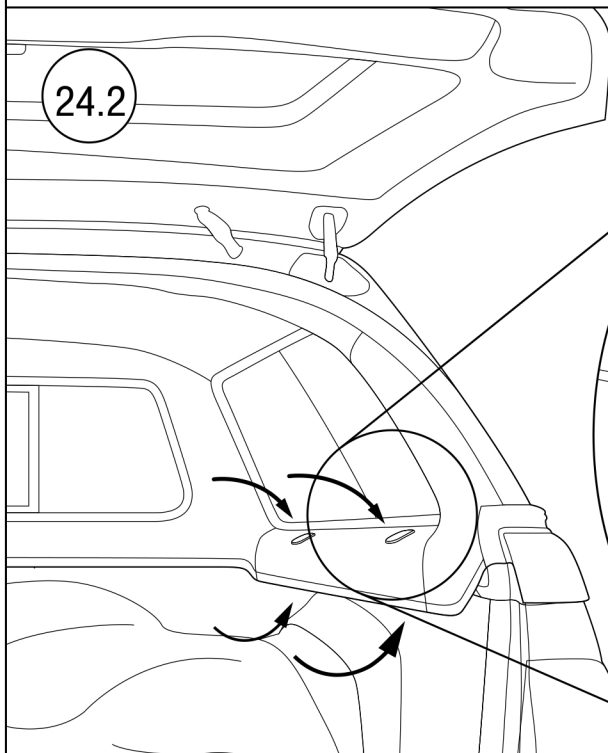


24.1



C-Clamp mounting positions
onto vehicle (Left).

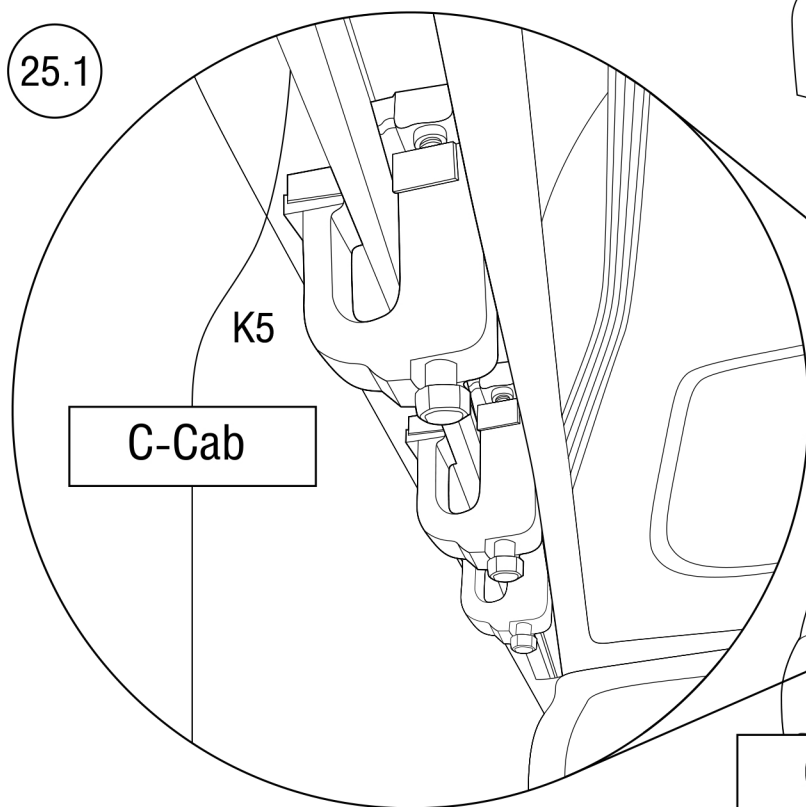
24.2



C-Clamp mounting positions
onto vehicle (Right).

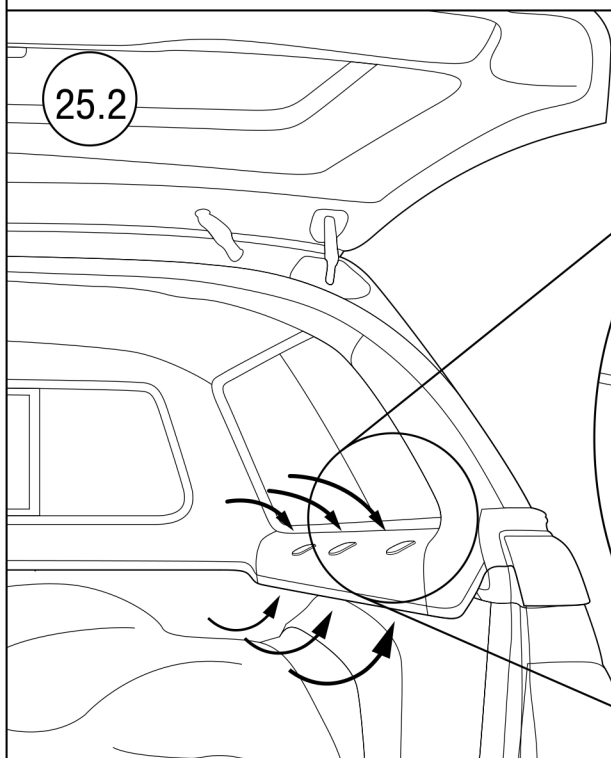


25.1

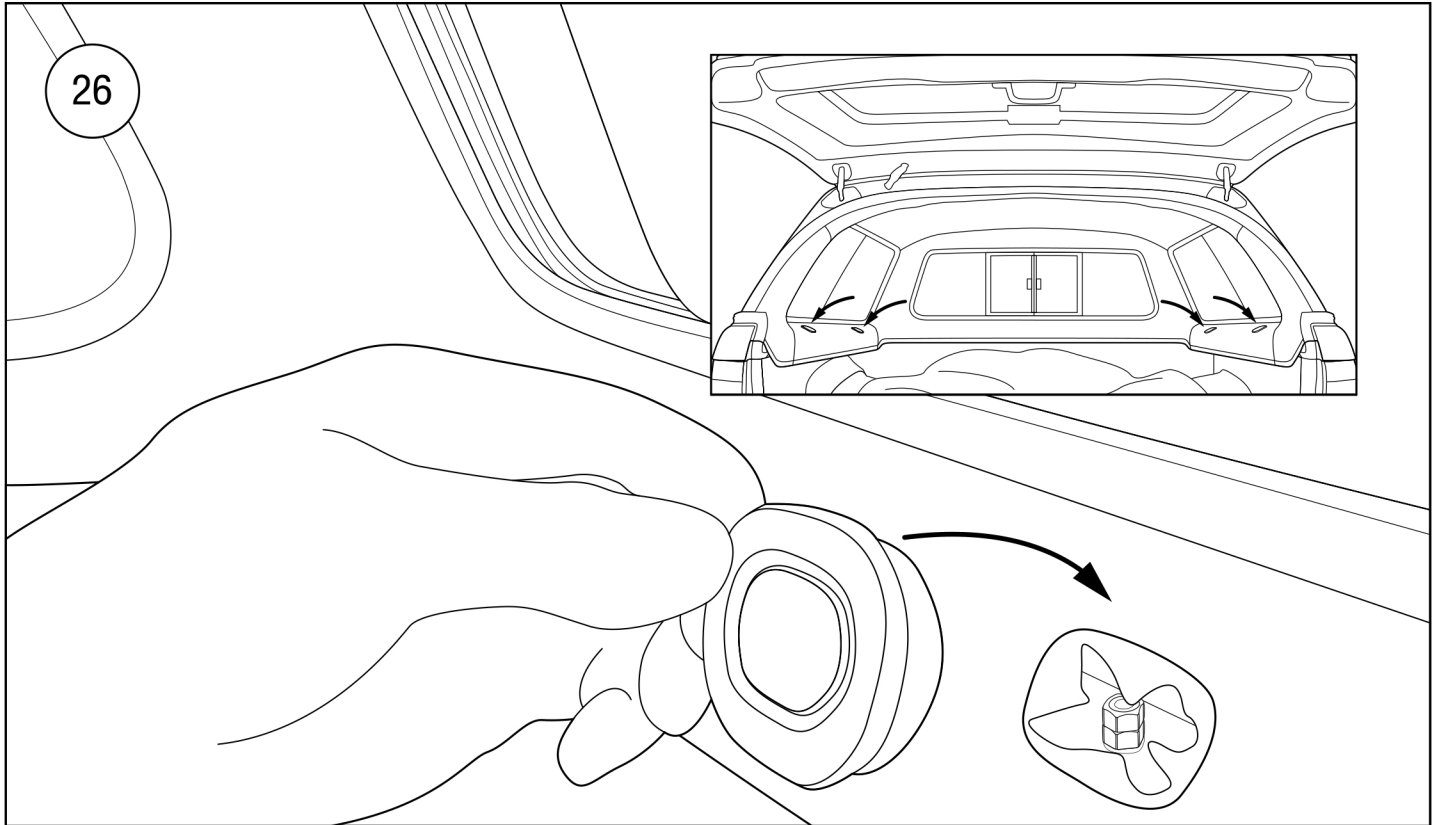


C-Clamp mounting positions
onto vehicle (Left).

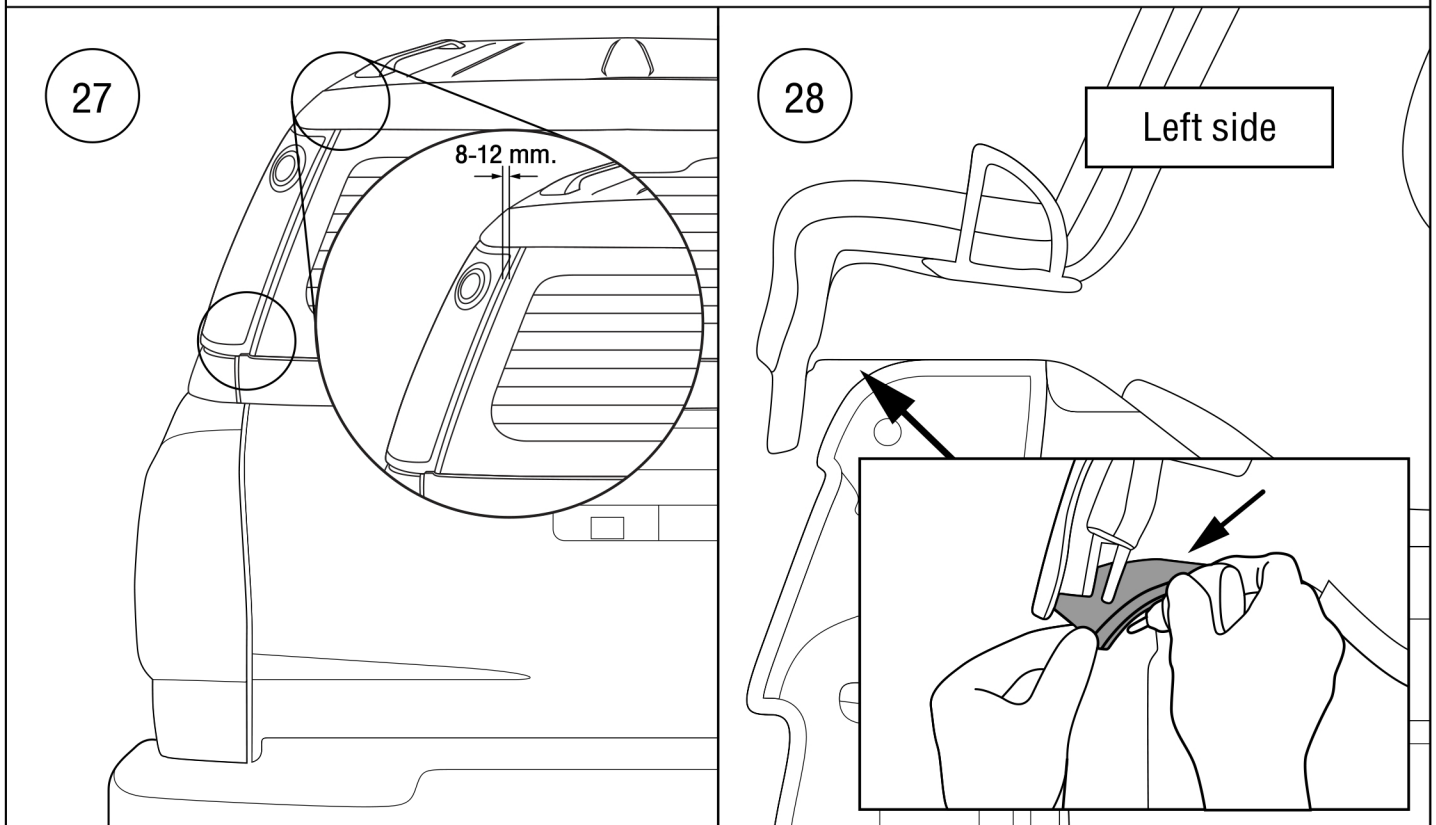
25.2



C-Clamp mounting positions
onto vehicle (Right).



Close the rubber plug.



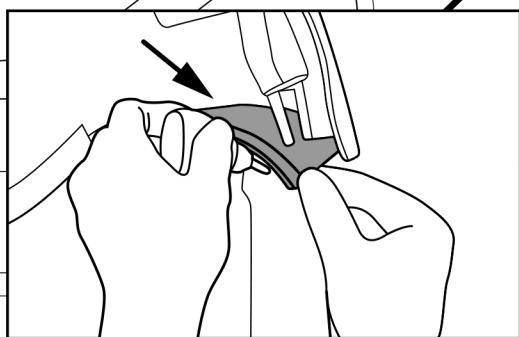
Measure the distance between backdoor and rear pillar, to have the 8-12 mm. in along the line.

Use the rubber close to gap between rear of canopy and rear of vehicle, Then use the power glue stick to it.



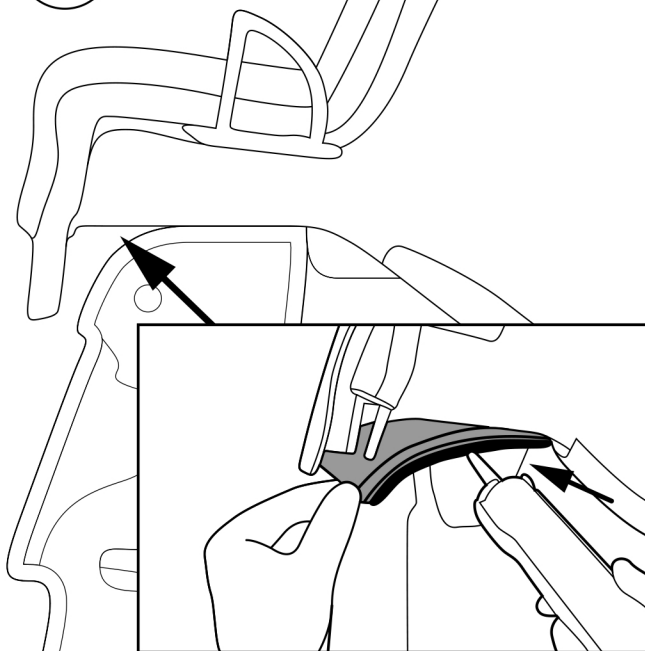
29

Right side



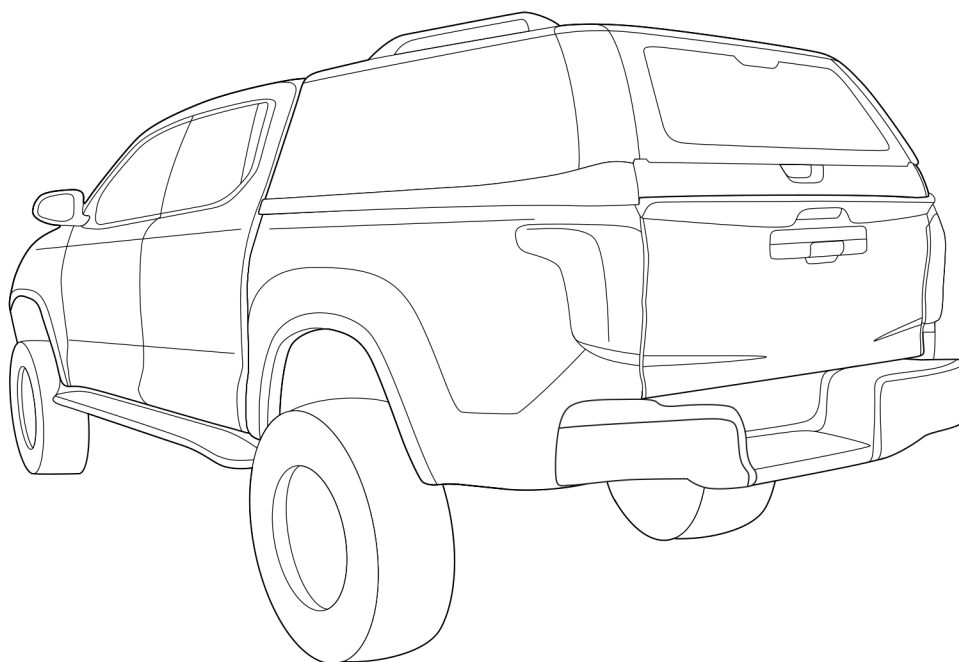
Use the rubber close to gap between rear of canopy and rear of vehicle, Then use the power glue stick to it.

30



Silicone seal again for waterproof in left/right side.

31



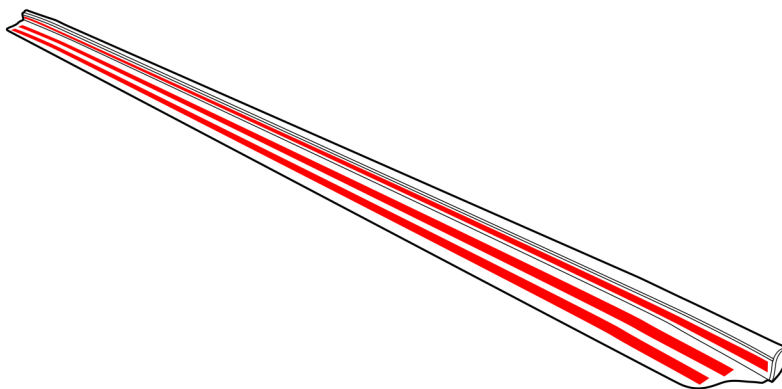
The process of canopy installation is completed.



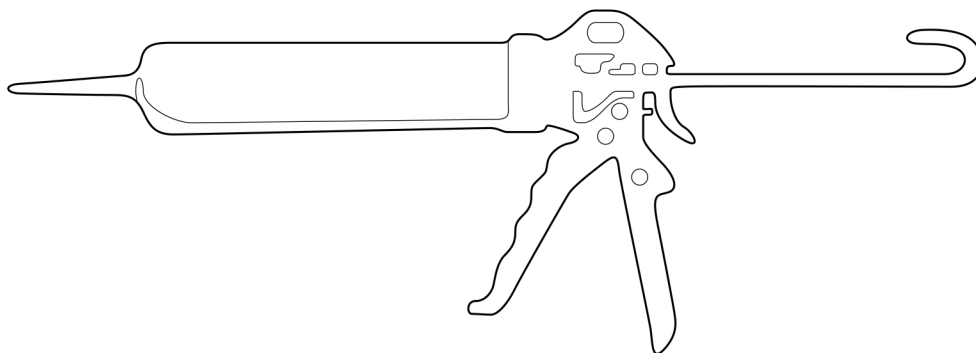
Installation Manual

For Tailgate Lip Weather Strip

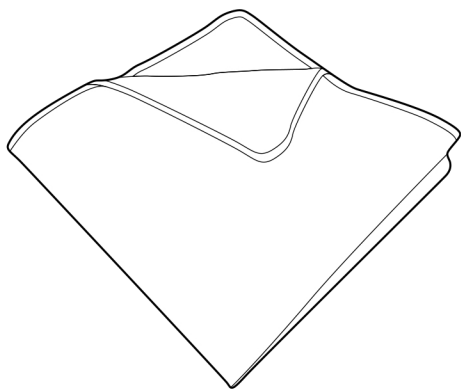
TOOL



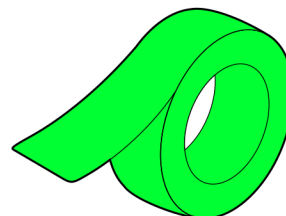
Tailgate Lip Weather Strip



Silicone Glue Gun



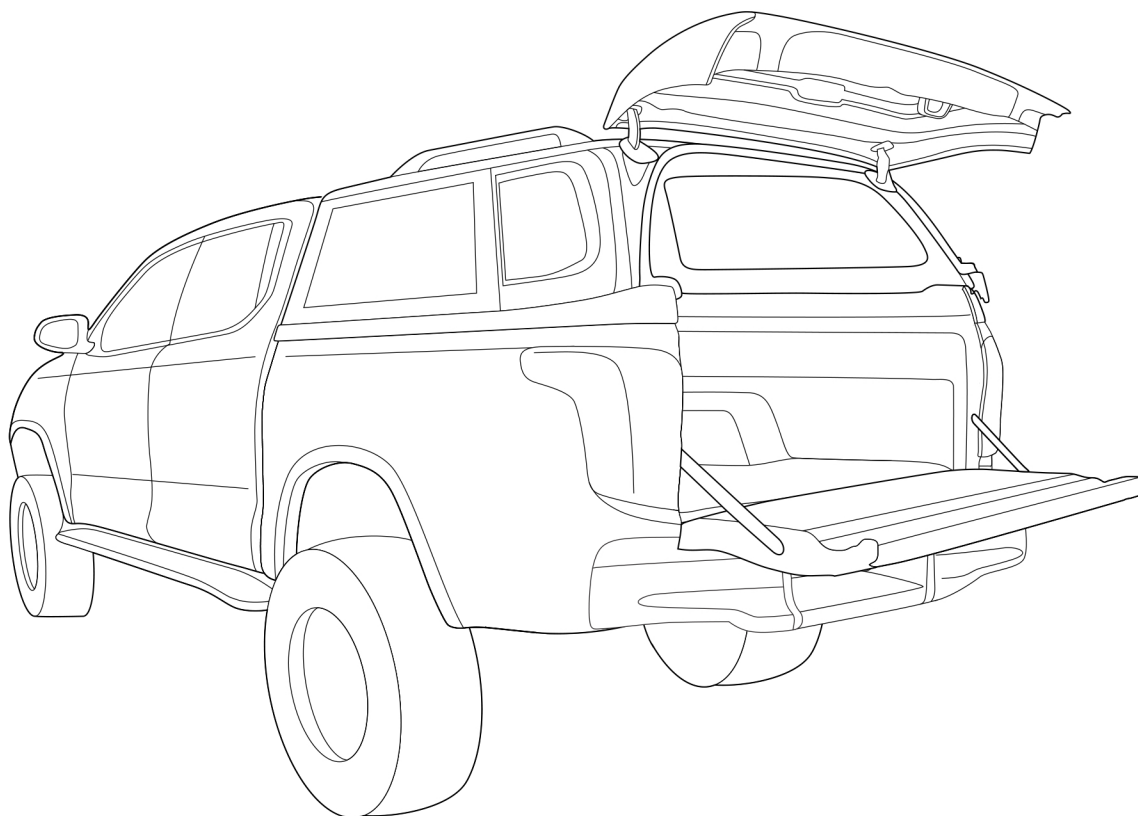
Cloth



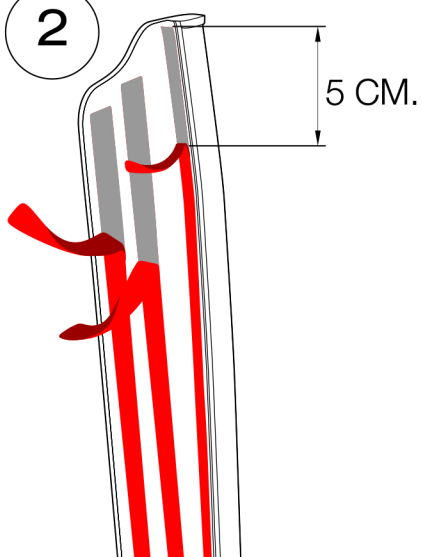
Masking Tape



- 1 Canopy can be installed on vehicle with or without tub liner.

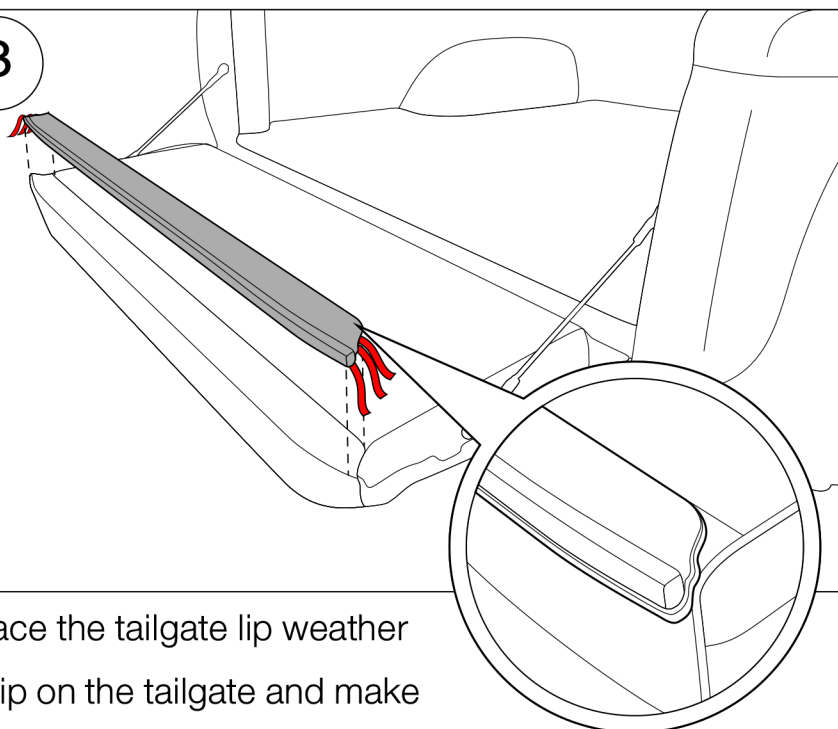


2



Peel off the adhesive lining from the tailgate lip weather strip by about 5 cm.

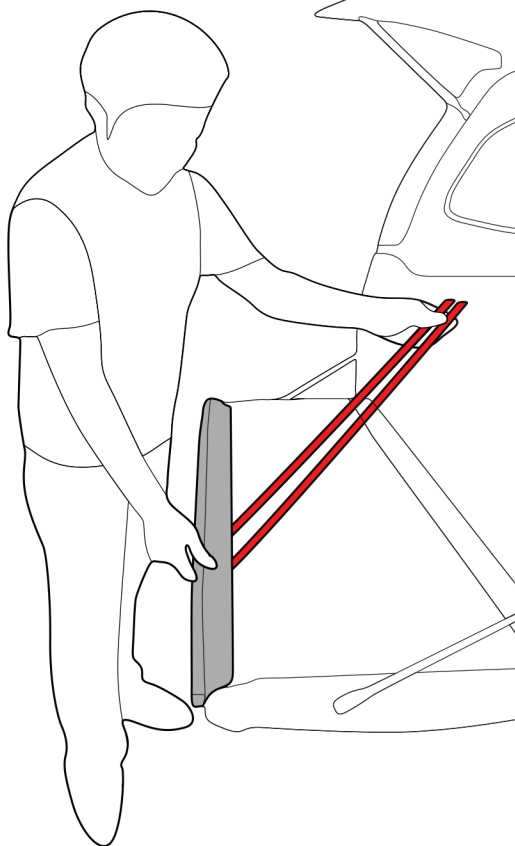
3



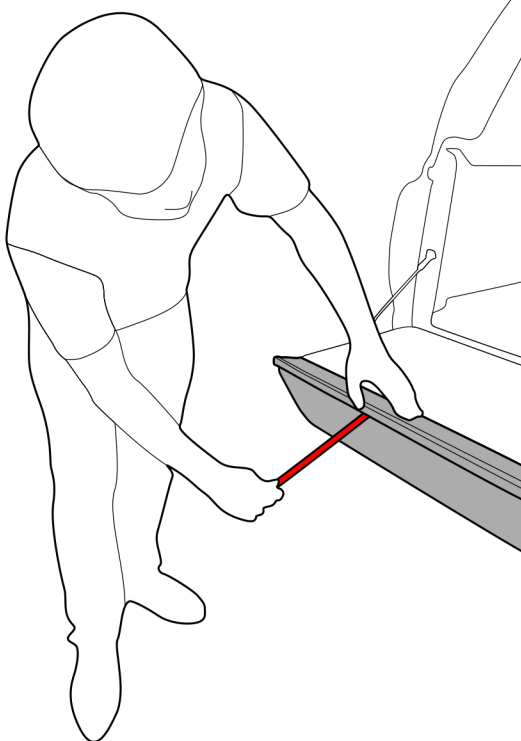
Place the tailgate lip weather strip on the tailgate and make adjustments such that the ends are spaced equally apart.



4

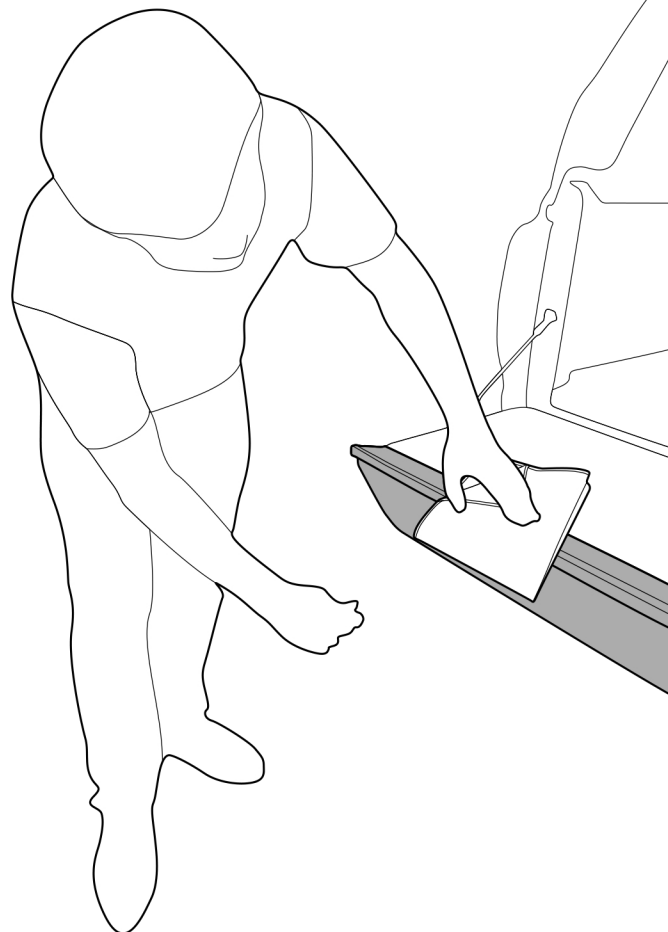


5

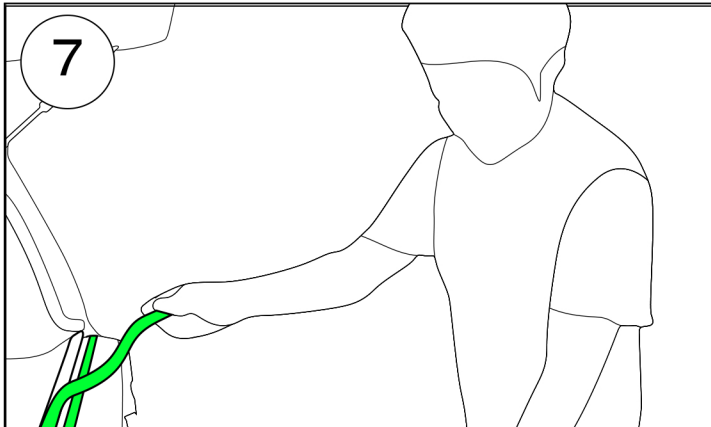


Remove the rest of the adhesive lining.

6



Use the cloth to apply pressure to the Weather Strip for adhering the strip to the tailgate and also to smooth out any unevenness.



Apply the masking tape at A as per figure inset, that extends along the full length of the tailgate.



Use the glue gun to apply the silicone glue at B along the tailgate as per figure inset. Use a rubber to smooth out the glue for a continuous seam.

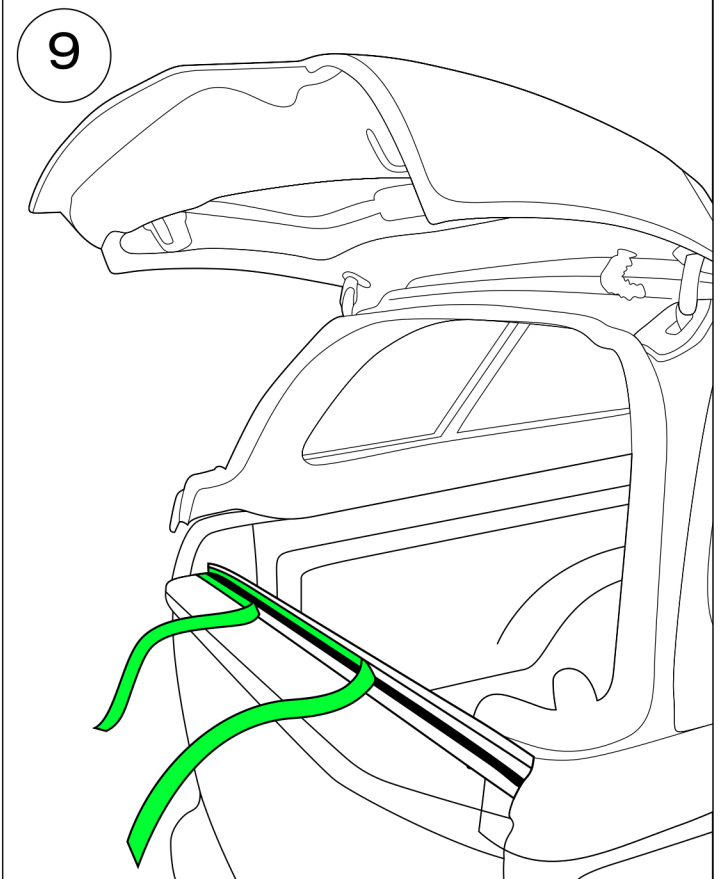
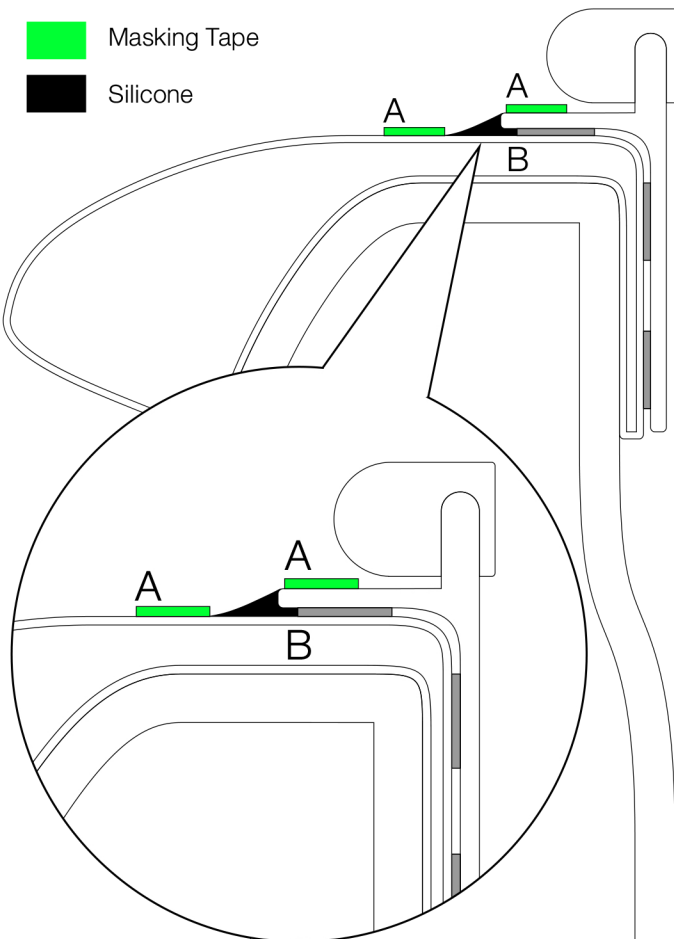
7a Figure inset : Typical section view of the tailgate.



Masking Tape



Silicone



Remove the masking tape after the silicone glue has been applied.